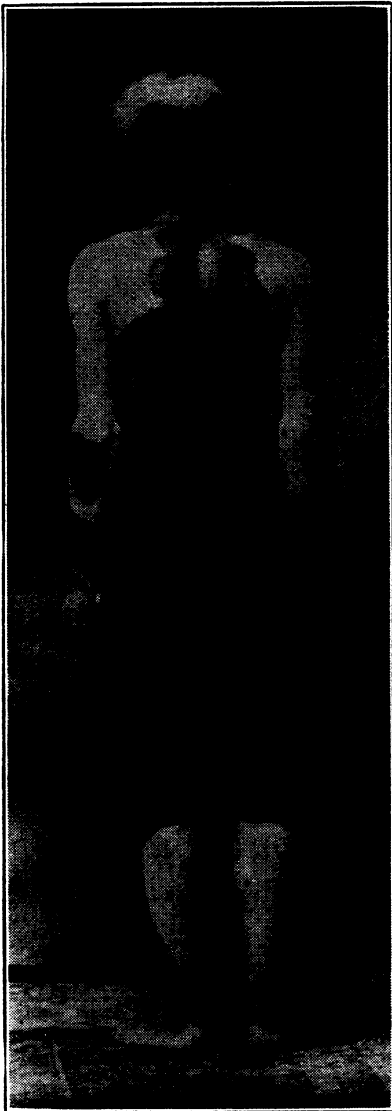


### Blending of Races

(Continued from page 338)

dissatisfied and often rebellious. This difference is believed to be caused by the disharmony of the different temperaments of the two races.

Lapp-Norwegian and Lapp-Swedish crosses are pretty much of a failure. The parent races are physically dissimilar and the resulting progeny fall ready victims to tuberculosis and strong drink, and have a tendency toward psychic disturbances and criminal behavior. People with a Lapp-Swedish-Finn ancestry, however, have tall bodies and narrow elongated faces. This length of limb and physiognomy does not always show up in the first generation but is



THE GRANDMOTHER OF THIS HYBRID might be called the founder of a new race. A spotted negro-white hybrid herself, seventeen spotted and sixteen normal colored descendants are down to her credit, according to the records of the American Genetics Association. All these spotted hybrids are white in front. Note how the white skin grows white hair

apparent farther down in the family tree. The royal family of Sweden, the tall rulers of one of the tallest races in the world, show this lengthy result of much intermarriage with other strains.

Unhappily in the past most race mixing has come about between the worst elements, social and otherwise, of both races. There is little likelihood of the offspring of the riff-raff of Europe and the easy virtue of a primitive tribe being a credit to either parental strain. Likewise when a cross occurs between races that are physically and mentally widely different, the children are bound to suffer from the internal war of temperaments.

Looking at the experiments in race crossing that have been performed in the course of the world's progress it is evident that interbreeding is not always bad. When the bride and groom-to-be are of sound and healthy stock their progeny are likely to be encouraging products. It is particularly important that the physical and temperamental differences between the two races shall not be too wide. This compatibility of racial temperaments and a healthy racial history are just as essential in the joining of races as in the marriage of individuals.

And looking into the future, it may be that out of the great earth melting pot there will emerge during the course of milleniums new races, approaching perhaps in brain or brawn the super-men imagined by the poets and the idealists.

Science News-Letter, November 26, 1927

Michigan has the longest coast line of any state.

Gasoline tax receipts indicate that motorists are using more gasoline this year than last.

A gift by a former mayor of Minneapolis is providing the city with a hospital for crippled children.

Fishermen recently captured a 20,000 pound whale after struggling with it four days in a net.

The Denver City Park Zoo is said to have the finest collection of North American animals in existence.

It has been proposed that the famous old Coast Guard cutter, the *Bear*, be turned into an Arctic museum.

### Bobbed Hair in Rome

Hairdressers must have been as highly skilled and as well remunerated in ancient Rome as members of that prosperous clan are today, judging by the elaborate coiffeurs of Roman empresses shown in a series of portrait busts that have just appeared in *Art and Archæology*, the journal of the Archæological Society of Washington.

The styles of coiffeur represented in the period from 50 B. C. to 300 A. D. ranged from an ultra-modern looking bob of tight thick curls to an elaborate coronet arrangement of twists and braids that could hardly have all grown on the lady's own head, according to Miss Ernestine F. Leon, who is conducting this research on the tonsorial art of antiquity.

Curling irons and pomade jars found at Pompeii bear testimony that many lovely Romans did not have naturally curly hair, while the headquarters of a thriving false hair trade, it is known from several references in Latin literature, was located at the Portico Phillipus in the Campus Martius at Rome.

Unfortunately there is no authentic portrait bust of Cleopatra. The only concrete notion posterity can get of the famous Egyptian's charms comes from coins struck with her image during her reign. The coins do not bear the profile of any ravishing beauty but as Miss Leon points out this may be due partly to the deficiency of the minter's art and partly to the fact that the queen had more fascination of manner than regularity of features. According to this imperfect record, Cleopatra had a thin face with heavy features and an aquiline nose. Her luxuriant locks were combed forward and divided into seven strands, twisted each into a separate roll and drawn back over the top and sides of the head to the nape of the neck. Here the ends were fastened into a small hard knot tied with a fillet the ends of which were left hanging down loose.

The bust of Livia, the wife of Augustus Caesar, who was about sixteen years younger than Cleopatra, shows a classical simplicity in hairdressing that is almost severe when compared to her more dashing contemporary.

Science News-Letter, November 26, 1927