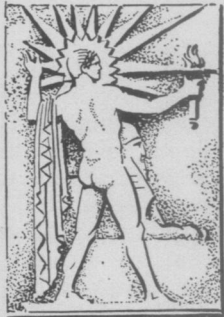


EUROPEAN

TRAVEL

NUMBER



# SCIENCE NEWS-LETTER

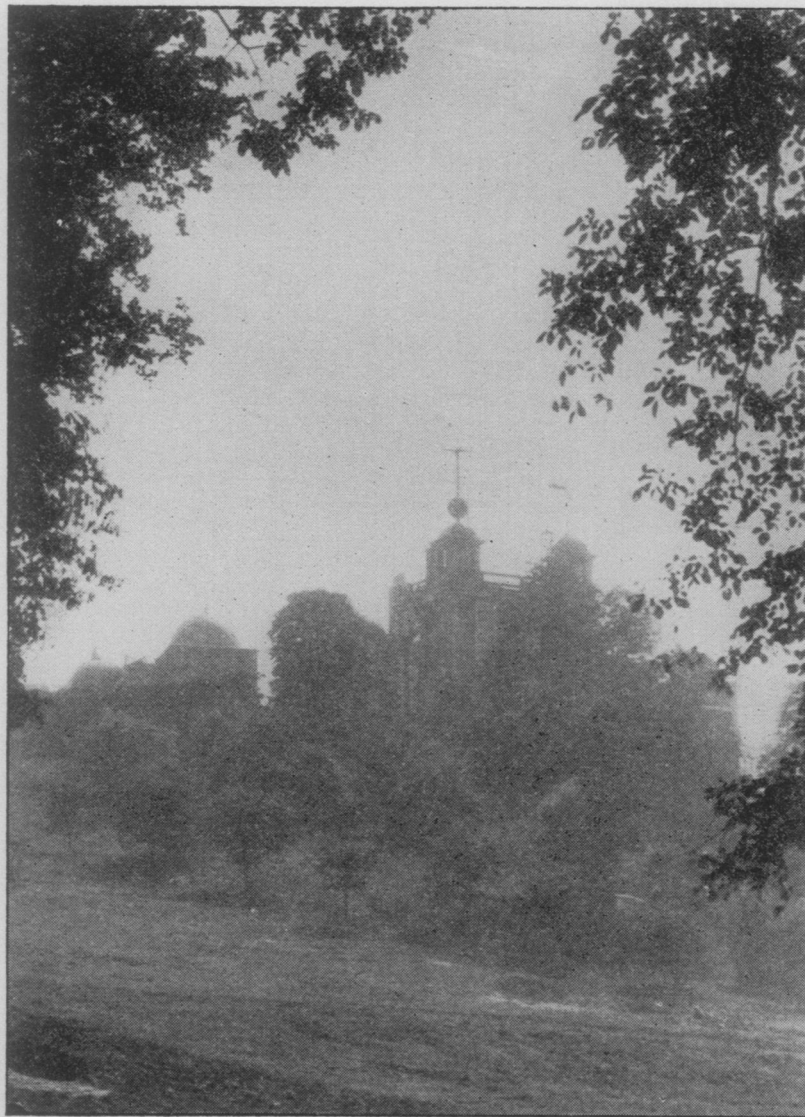
*The Weekly Summary of Current Science*  
A SCIENCE SERVICE PUBLICATION



\$5 a year 15c a copy



April 7, 1928



LONGITUDE 0° 00' 00"  
*The Royal Observatory at Greenwich*  
(See page 223)

Vol. XIII

No. 365



## Museums in Europe

*General Science*

Museums are so well listed in the guide-books, such as the Baedekers, Muirhead guides and the books published locally for each large city, that it is not believed worth while to present mere lists of science museums.

The thorough scientific traveler may wish to check through the new edition of "Minerva," the German compendium of intellectual institutions, and discover collections and places that would otherwise be missed. The "Minerva" lists are also particularly good for universities. German museums are listed and described in the "Jahrbuch der Deutschen Museen" by Albert Schramm, published in Leipzig. The International Office of Museums, with headquarters in the Palais Royal, Paris, is publishing a series of directories of continental museums, most of art.

The leading industrial museums of Europe, catalogs and pamphlets upon which may be found in the library of the Museums of the Peaceful Arts, 24 West 40th St., New York City, are as follows:

Conservatoire des Arts et Metiers, Paris, France.

Deutsches Museum, Munich, Germany.

Technisches Museum für Gewerbe und Industrie, Vienna, Austria.

Science Museum, London, England.

*Science News-Letter, April 7, 1928*

**I**NTERPRETING week by week, the latest developments in the various fields of science, this magazine attempts also to present its articles in the most pleasing and readable topography and the most convenient arrangement.

Each article is automatically *indexed* by the key word printed in italics just below the heading, or at the end of the article when the article has no heading. Articles can thus be filed easily into any system of classification, whether it be Library of Congress, Dewey, or one of the reader's own devising.

Each article is automatically *dated* by its last line.

*An extra supply of this issue and next week's American Travel Number of the Science News-Letter are provided so that you can send copies to your friends who are planning vacation trips. Send 30 cents (in stamps if you wish) and a memorandum of name and address.*

**I**N these tourist cabin days, a considerable portion of America emigrates each year for a few weeks in Europe. To aid the scientifically inclined traveler to make the most of his trip, this European travel issue of the SCIENCE NEWS-LETTER has been prepared. It is not a complete guide to scientific Europe. It is more nearly a few notes and addresses such as a friend of yours might give you as his contribution to the happiness of your stay in an unknown city.

Realizing the shortcomings in the scope, detail and arrangement of this memorandum guide, we solicit every reader to contribute suggestions and information. If you visit any scientific place of interest we suggest that you record the facts for the travel files of Science Service and the 1929 travel issues of the SCIENCE NEWS-LETTER.

*Science News-Letter, April 7, 1928*

## In This Issue—

Corner of the ocean, p. 211—A star hangs higher, p. 211—Where the weather, p. 212—Walks on the sea, p. 212—Ex-barbers, p. 213—City of institutes, p. 213—Mathematics and flowers, p. 214—Biological Bethlehem, p. 215—Permanent records, p. 216—So this is — ! p. 217—Catching material, p. 218—Fifty miles of books, p. 219—Flowers and plants, p. 220—2,000 year old news, p. 221—Men and stars, p. 223.



SCIENCE NEWS-LETTER, The Weekly Summary of Current Science. Published by Science Service, Inc., the Institution for the Popularization of Science organized under the auspices of the National Academy of Sciences, the National Research Council and the American Association for the Advancement of Science.

Edited by Watson Davis.

Publication Office, 1918 Harford Ave., Baltimore, Md. Editorial and Executive Office, 21st and B Sts., N. W., Washington, D. C. Address all communications to Washington, D. C. Cable address: Scienserve, Washington.

Entered as second class matter October 1, 1926, at the postoffice at Baltimore, Md., under the act of March 3, 1879. Established in mimeographed form March 13, 1922. Title registered as trade-mark, U. S. Patent Office.

Subscription rate—\$5.00 a year postpaid. 15 cents a copy. Ten or more copies to same address, 5 cents a copy. Special reduced subscription rates are available to members of the American Association for the Advancement of Science.

Advertising rates furnished on application.

Copyright 1928, by Science Service, Inc. Reproduction of any portion of the SCIENCE NEWS-LETTER is strictly prohibited since it is distributed for personal, school, club or library use only. Newspapers, magazines and other publications are invited to avail themselves of the numerous syndicate services issued by Science Service, details and samples of which will be gladly sent on request.

## Archæological Museums

*Anthropology and Archaeology*

List prepared by Dr. George Grant MacCurdy of Yale University.

ENGLAND—*London*: British Museum, Bloomsbury; Museum of Natural History, South Kensington; Wellcome Historical Medical Museum, 54 A Wigmore Street; Bryant & May Museum of Fire-making Appliances. *Cambridge*: Museum of Ethnology. *Dorchester*: Dorset Museum. *Ipswich*: Natural History Museum. *Oxford*: Pitt Rivers Museum; Ashmolean Museum.

FRANCE—*Paris*: Museum d'Histoire naturelle; Institut de Paleontologie Humaine. *St. Germain-en-Laye*: Musée des Antiquités Nationales. *Périgueux*: Musée Archéologique. *Toulouse*: St. Raymond Museum; Musée d'Histoire naturelle.

GERMANY—*Berlin*: Museum für Völkerkunde. *Bonn*: Provinzial Museum. *Cologne*: Städtisches Museum für Ur-und Frühgeschichte. *Dresden*: Museum für Mineral. Geol. und Vorgeschichte. *Halle*: Provinzial Museum. *Hannover*: Provinzial Museum. *Mainz*: Römisch-Germanisches Museum. *Tübingen*: Urgeschichtliches Forschungsinstitut. *Weimar*: Städtisches Museum.

AUSTRIA—*Vienna*: Naturhistorisches Museum.

BELGIUM—*Brussels*: Musée d'Histoire Naturelle; Musée Cinquante-naire.

BULGARIA—*Sofia*: National Museum.

CZECHOSLOVAKIA—*Prague*: National Museum. *Brno*: Moravské Zemské Museum.

DENMARK—*Copenhagen*: National Museum.

ITALY—*Rome*: Museo Preistorico e etnografico. *Florence*: Museo Nazionale di Antropologia e etnologia.

JUGOSLAVIA—*Belgrade*: Museum of Archeology.

HOLLAND—*Haarlem*: Teyler Museum. *Leiden*: Tevaren Museum.

HUNGARY—*Budapest*: National Museum.

MONACO—Musée Anthropologique.

NORWAY—*Oslo*: Historical Museum.

POLAND—*Lemberg (Lwow)*: Musée Drieduszycki. *Cracow*: Musée archéologique de l'Académie des Sciences.

SPAIN—*Madrid*: Museo Antropológico; Museo Arqueológico.

SWITZERLAND—*Bâle*: Natural History Museum. *Berne*: Historisches Museum. *St. Gallen*: Heimatmuseum; Historisches Museum. *Zurich*: Landes Museum.

*Science News-Letter, April 7, 1928*