

NATURE RAMBLINGS

By Frank Thone



Liquidambar

Anybody who is planning on putting in a group of shade or ornamental trees, whether in a park planting, around a country house or even on a fair-sized city place, will do well to remember the liquidambar, or sweet-gum. This splendid tree of the American southeast is at least moderately hardy, and will thrive in cultivation many hundreds of miles north and west of its natural range.

It may have to be nursed a bit while it is little, and there will always remain the danger that a too-stiff windstorm will wrench off a limb, for its wood is none too strong; but even so, it will, in many future autumns, repay a thousand times over the care it gets.

For there is scarcely a tree that can show such splendid leaves in the fall. Pointed like stars, they change from their strong summer green to a deep wine-purple that is the very blood of the sun. An autumn-colored liquidambar against a sunset sky, with the light shining through its sanguine leaves, is a sight not soon to be forgotten.

The fruits of the liquidambar tree also are worth growing to look at, though they are not good for even birds or squirrels to eat. They are such curious-looking things, bristling toward all the stars with their hundred sharp little points, like maces for the wars of fairy cavalry.

And the twigs of the tree intrigue one's interest as well, for they have caught the trick, known to a few widely scattered woody plants, of developing their cork in long, narrow streaks, so that they come to be ridged with "Wings" of bark. All round, the sweet-gum is a tree of great interest as well as great beauty.

Botany

Science News-Letter, September 27, 1930

Paralysis Spreading

WITH 490 new cases of infantile paralysis reported to the U. S. Public Health Service in one week recently, it is feared that the outbreak may reach epidemic proportions. This total is higher than it has been for several years. The increase over the preceding week was 128 cases.

No predictions can be made as to how far the outbreak will go, but state and local health officers throughout the country are very much concerned over the continued increase in the number of cases.

The situation in Kansas is especially serious, where 71 cases were reported for one week alone. Other states reporting large numbers are: Ohio, 65; New York, 60; California, 56; Illinois, 36; Massachusetts, 21; Minnesota, 28; Michigan, 10; Maine, 10; Iowa, 20; and Oklahoma, 11.

Health officers are advised to arrange for the collection and distribution of the convalescent serum which has been found helpful in treating the disease. Isolation of patients is of course necessary. Parents are advised to keep children out of

crowds and away from strangers. Because treatment is only successful in the early stages, before paralysis has set in, parents should lose no time in consulting a doctor if a child shows any suspicious symptoms.

Public Health

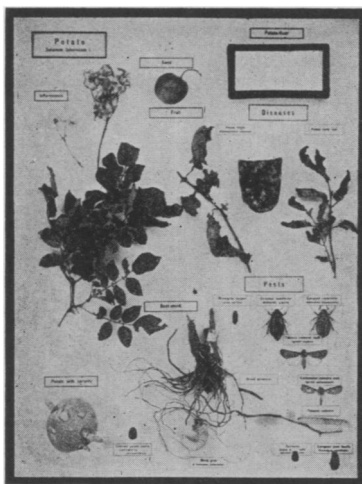
Science News-Letter, September 27, 1930

Staff of Science Service—Acting Director, Vernon Kellogg; Managing Editor, Watson Davis; Staff Writers, Frank Thone, James Stokley, Emily C. Davis, Jane Stafford, Marjorie Van de Water, J. W. Young; Librarian, Minna Gill; Sales and Advertising Manager, Hallie Jenkins.

Board of Trustees of Science Service—Honorary President, William E. Ritter, University of California. Representing the American Association for the Advancement of Science, J. McKeen Cattell, President, Editor, Science, Garrison, N. Y.; D. T. MacDougal, Director, Desert Laboratory, Tucson, Ariz.; Dr. Raymond Pearl, Director, Institute for Biological Research, Johns Hopkins University, Baltimore, Md. Representing the National Academy of Sciences, John C. Merriam, President, Carnegie Institute of Washington; R. A. Millikan, Director, Norman Bridge Laboratory of Physics, California Institute of Technology, Pasadena, California; David White, Senior Geologist, U. S. Geological Survey, Representing National Research Council, Vernon Kellogg, Vice-President and Chairman of Executive Committee, Permanent Secretary, National Research Council, Washington, D. C.; G. G. Abbot, Secretary, Smithsonian Institution, Washington, D. C.; Harrison E. Howe, Editor of Industrial and Engineering Chemistry, Representing Journalistic Profession, John H. Finley, Associate Editor, New York Times; Mark Sullivan, Writer, Washington, D. C.; Marlen E. Pew, Editor of Editor and Publisher, New York City. Representing E. W. Scripps Estate, Harry L. Smith-ton, Treasurer, Cincinnati, Ohio; Robert P. Scripps, Scripps-Howard Newspapers, West Chester, Ohio; Thomas L. Sidlo, Cleveland, Ohio.

LIFE HISTORIES OF OUR COMMON CROPS

(Including Fungus and Insect Pests)



(e) Potato

Prepared in wood exhibition cases with glass tops, including not only the features of the plant itself, but also specimens of the most injurious fungus and insect pests, and samples of the most important manufactured products derived. For instance, the Potato preparation contains the following specimens:—

The plant, flower stalks, fruit, germinating potato tuber, potato alcohol, potato flour, potato leaf roll, tuber infected with late blight (*P. infestans*), plant infected with Bacterial Blight (*B. solanacearum*), Aphid (*A. solani*), June Bugs (*Melolontha vulgaris*, *M. hippocastani*, and *Rhizotrogus solstitialis*), June Bug larva, Leaf Beetle (*Adimonia*), Mole Cricket (*Gryllotalpa*), Root Borer (*Lacon*), Satin Moth and pupa (*Agrotis*), Colorado Potato Bug and larva (*Lep. tinotarsa*).

The following life histories are available:—

- (a) Rye (*Secale cereale*)
- (b) Wheat (*Triticum vulgare*)
- (c) Barley (*Hordeum sativum*)
- (d) Oats (*Avena sativa*)
- (e) Potato (*Solanum tuberosum*)
- (f) Bean (*Phaseolus vulgaris*)
- (g) Pea (*Pisum sativum*)
- (h) Horse Bean (*Vicia faba*)

E1575 Common Crops Life Histories (specify letter), each.....\$6.50



NEW YORK BIOLOGICAL SUPPLY CO.

General Supplies for the Biological Sciences
34 UNION SQUARE
NEW YORK, N. Y.

