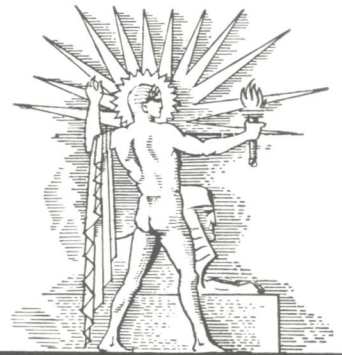
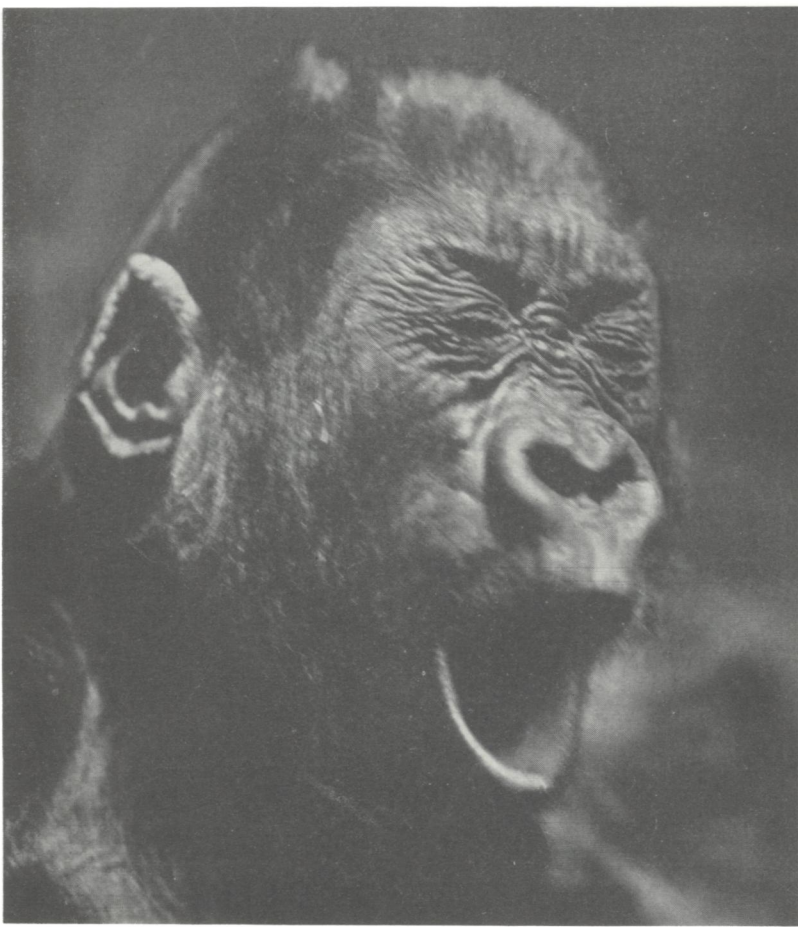


PRICE
15¢

SCIENCE NEWS LETTER

THE WEEKLY SUMMARY OF CURRENT SCIENCE ●



AUGUST 22, 1931

Good Heavens, Young Lady!

See Page 126

A

SCIENCE SERVICE PUBLICATION

SCIENCE NEWS LETTER

VOL. XX

No. 541

The Weekly
Summary of  Current
Science

Published by

SCIENCE SERVICE

The Institution for the Popularization of Science organized under the auspices of the National Academy of Science, the National Research Council and the American Association for the Advancement of Science.

Edited by WATSON DAVIS

Subscription rates—\$5.00 a year postpaid. 15 cents a copy. Ten or more copies to same address, 5 cents a copy. Special reduced subscription rates are available to members of the American Association for the Advancement of Science.

In requesting change of address, please give old as well as new address.

Advertising rates furnished on application.

Board of Trustees of Science Service

Honorary President, William E. Ritter. University of California. Representing the American Association for the Advancement of Science; J. McKeen Cattell, *President*, Editor, Science, Garrison, N. Y.; Burton E. Livingston, Johns Hopkins University, Baltimore, Md.; Raymond Pearl, Director, Institute for Biological Research, Johns Hopkins University, Baltimore, Md. Representing the National Academy of Sciences, W. H. Howell, *Vice-President and Chairman of Executive Committee*, National Research Council, Washington, D. C.; R. A. Millikan, Director, Norman Bridge Laboratory of Physics, California Institute of Technology, Pasadena, Calif.; David White, Senior Geologist, U. S. Geological Survey, Representing National Research Council, Vernon Kellogg, Permanent Secretary, National Research Council, Washington, D. C.; C. G. Abbot, Secretary, Smithsonian Institution, Washington, D. C.; Harrison E. Howe, Editor of Industrial and Engineering Chemistry. Representing Journalistic Profession, John H. Finley, Associate Editor, New York Times; Mark Sullivan, Writer, Washington, D. C.; Marlen E. Pew, Editor of Editor and Publisher, New York City. Representing E. W. Scripps Estate, Harry L. Smithton, *Treasurer*, Cincinnati, Ohio; Robert P. Scripps, Scripps-Howard Newspapers, West Chester, Ohio; Thomas L. Sidlo, Cleveland, Ohio.

Staff of Science Service

Managing Editor, Watson Davis; Staff writers: Frank Thone, Emily C. Davis, Jane Stafford, Marjorie Van de Water, J. W. Young, D. Lindsay Watson; Librarian, Minna Gill; Sales and Advertising Manager, Hallie Jenkins.

Copyright, 1931, by Science Service, Inc. Reproduction of any portion of the SCIENCE NEWS LETTER is strictly prohibited since it is distributed for personal, school, club or library use only. Newspapers, magazines and other publications are invited to avail themselves of the numerous syndicate services issued by Science Service, details and samples of which will gladly be sent on request.

Publication Office, 1930 Clifton Ave., Baltimore, Md. Editorial and Executive Office, Constitution Ave. at 21st St., N. W., Washington, D. C.

Address all communications to Washington, D. C. Cable address: Scienservc, Washington.

Entered as second class matter October 1, 1926, at the post-office at Baltimore, Md., under the act of March 3, 1879. Established in mimeographed form March 13, 1922. Title registered as trade-mark, U. S. Patent Office.

DO YOU KNOW THAT

Tin exposed to extreme cold may crumble to dust.

Louisiana leads the United States in quantity production of furs.

A new method of applying aluminum to iron produces in effect a "rustless" iron.

During about a month in summer the polar regions receive as much heat as does the equator.

Government entomologists uphold one popular tradition: some persons are more attractive to mosquitoes than others.

A metal diving suit, recently produced, is said to enable a diver to descend to a depth of 1,200 feet and to remain under water for a long time.

Scientists of the U. S. Public Health Service are studying the nutritive value of crops, in order to know which food crops are best in different regions for prevention of pellagra.

White was the color of royalty during some stages of Egypt's ancient history.

Luminous rain is a weather phenomenon which has been observed on rare occasions.

Before the World War only about 27 per cent. of the Russian people could read and write; the percentage in 1930 was reported as 62.

Mexico appropriates more money per capita for archaeological researches than any other government.

The sixteenth century alchemist Paracelsus advanced the idea that disease was the result of a disturbance in bodily chemistry.

Young fish in the state hatcheries of Michigan are feeling the depression: their usual diet, which includes beef and sheep liver and other ground-up fresh meats, has been replaced by oatmeal, dried meats and other less expensive foods.

WITH THE SCIENCES THIS WEEK

AGRICULTURAL MACHINERY	MEDICINE	
The McCormick Reaper "A Classic Invention" 118	Fleas Carry Typhus Germ 120	
ARCHAEOLOGY	Healing with Maggots 122	
Cheer-evoking Vase 116	Lack of Iron as Cause of Pellagra 121	
Unearth Site of Stone Age Village 121	METEOROLOGY	
BIOLOGY	Drought Center Shifts 126	
Quarter-Pound Eggs 127	OCEANOGRAPHY	
BOTANY	Icebergs on Labrador Coast 120	
Galls—"Nature Ramblings" 127	ORDNANCE	
Largest Living Thing 117	May Abandon Army Rifle 115	
ENGINEERING	ORNITHOLOGY	
New Auto Safety Code 121	Discover Harris's Sparrow's Eggs 120	
ENTOMOLOGY	PALEONTOLOGY	
Galls—"Nature Ramblings" 127	Tertiary Age Sugars 125	
Worms Menace Golf Courses 116	PHYSICS	
EXPLORATION	Caesar's Last Gasp 124	
China Ban Protested 116	PHYSIOLOGY	
GENERAL SCIENCE	Sex Matter of Spirals 117	
Book Reviews 128	PSYCHOLOGY	
GENETICS	Children Like Comic Movies 121	
Taste Deficiency is Inherited 120	Noise and Efficiency 121	
MATHEMATICS	Triangle Best Recognized 125	
Trisecting the Angle 124	ZOOLOGY	
	The Girl on the Cover 126	
	Goldfish Survive Tobacco Test 120	

Science Service presents over the radio, an address

THE ELECTRICAL TRANSMISSION OF SPEECH

By J. B. Kelly, engineer of the Bell Telephone Laboratories, New York City

Friday, August 28, at 2:45 P. M., Eastern Standard Time

Over Stations of

The Columbia Broadcasting System