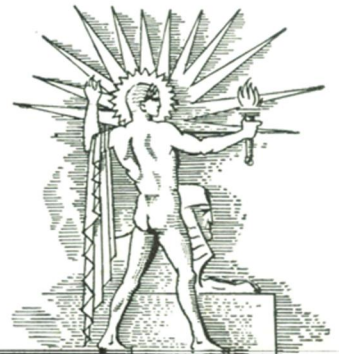
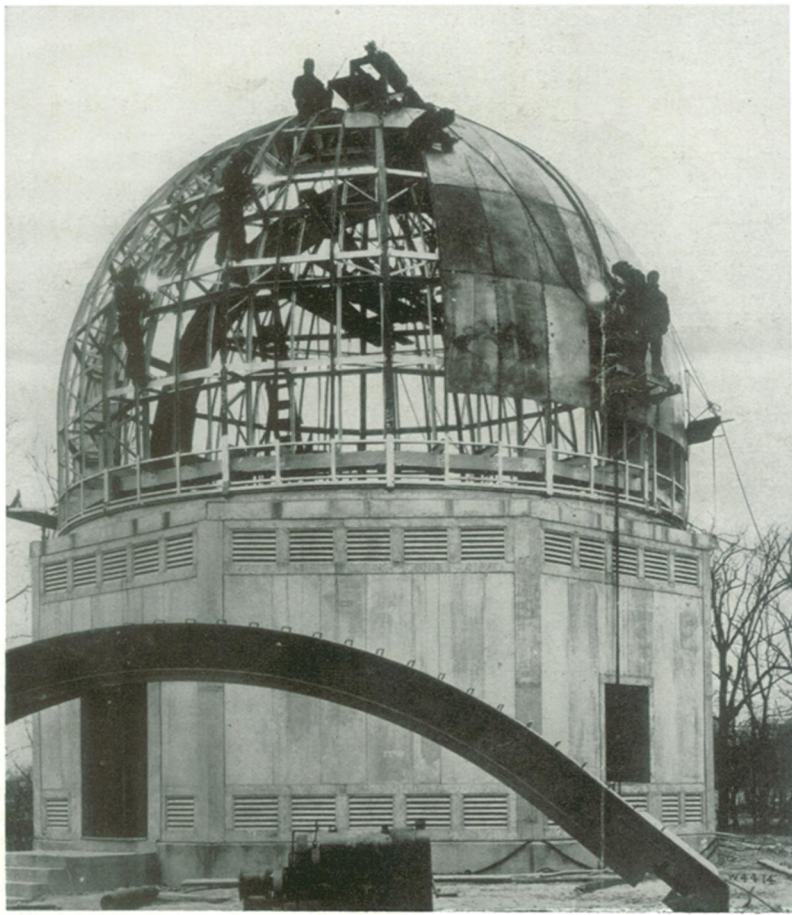


PRICE
15¢

SCIENCE NEWS LETTER

THE WEEKLY SUMMARY OF CURRENT SCIENCE ●



MAY 13, 1933

Rising Silently To Protect Nation's Time

See Page 303

A

SCIENCE SERVICE PUBLICATION

SCIENCE NEWS LETTER

VOL. XXIII

No. 631

The Weekly  Current
Summary of Science

Published by

SCIENCE SERVICE

The Institution for the Popularization of Science organized under the auspices of the National Academy of Sciences, the National Research Council and the American Association for the Advancement of Science.

Edited by WATSON DAVIS

Subscription rates—\$5.00 a year postpaid; two years \$7.00; 15 cents a copy. Ten or more copies to same address, 5 cents a copy. Back numbers more than six months old, 25 cents.

In requesting change of address, please give old as well as new address.

Advertising rates furnished on application.

Board of Trustees of Science Service

Honorary President, William E. Ritter, University of California. Representing the American Association for the Advancement of Science, J. McKeen Cattell, *President*, Editor, Science, Garrison, N. Y.; Burton E. Livingston, Johns Hopkins University, Baltimore, Md.; Raymond Pearl, Director, Institute for Biological Research, Johns Hopkins University, Baltimore, Md. Representing the National Academy of Sciences, W. H. Howell, *Vice-President and Chairman of Executive Committee*, National Research Council, Washington, D. C.; R. A. Millikan, Director, Norman Bridge Laboratory of Physics, California Institute of Technology, Pasadena, Calif.; David White, Senior Geologist, U. S. Geological Survey. Representing National Research Council, Vernon Kellogg, Secretary Emeritus, National Research Council, Washington, D. C.; C. G. Abbot, Secretary, Smithsonian Institution, Washington, D. C.; Harrison E. Howe, Editor of Industrial and Engineering Chemistry. Representing Journalistic Profession, John H. Finley, Associate Editor, New York Times; Mark Sullivan, Writer, Washington, D. C.; Marlen E. Pew, Editor of Editor and Publisher, New York City. Representing E. W. Scripps Estate, Harry L. Smithton, *Treasurer*, Cincinnati, Ohio; Robert P. Scripps, Scripps-Howard Newspapers, West Chester, Ohio; Thomas L. Sidlo, Cleveland, Ohio.

Staff of Science Service

Director, Watson Davis; Staff writers: Frank Thone, Emily C. Davis, Jane Stafford, Marjorie Van de Water, J. W. Young; Librarian, Minna Gill; Sales and Advertising Manager, Hallie Jenkins.

Copyright 1933, by Science Service, Inc. Reproduction of any portion of the SCIENCE NEWS LETTER is strictly prohibited since it is distributed for personal, school, club or library use only. Newspapers, magazines and other publications are invited to avail themselves of the numerous syndicate services issued by Science Service, details and samples of which will gladly be sent on request.

Members of the American Association for the Advancement of Science have the privilege of subscribing to the SCIENCE NEWS LETTER at the reduced price of \$3 per year. Application for this privilege should be accompanied by privilege card obtained from the Permanent Secretary, A. A. S., Smithsonian Institution Building, Washington, D. C.

Publication Office, 1930 Clifton Ave., Baltimore, Md., Editorial and Executive Office, Constitution Ave. at 21st St., N. W., Washington, D. C.

Address all communications to Washington, D. C. Cable address: Scienservc, Washington.

Entered as second class matter October 1, 1926, at the post-office at Baltimore Md., under the act of March 3, 1879. Established in mimeographed form March 13, 1922. Title registered as trade-mark, U. S. and Canadian Patent Offices.

DO YOU KNOW?

The first record of using explosives in mining goes back to 1627.

Approximately two-thirds of the world's production of camphor is used by makers of plastics.

Psychological tests at the University of California indicate that the slow thinker is not necessarily dull.

A check-up of the number of carriers of typhoid and paratyphoid fever in New York State showed 620 of them in 1932.

At the present rate of ice recession, the glaciers of Mount Rainer National Park probably will disappear in a few thousand years.

The Chalice of Antioch, believed by some experts to date from the first century A.D. and associated with Christian tradition, will be exhibited at the Chicago Fair.

The Great Comet of 1811 was bigger than the sun.

A Roman theater of the first century B.C. has been unearthed at Merida, Spain.

A new use for cotton is in making bearings for machinery operating at very high pressures.

A new German process produces a thin oxide coating on aluminium, thus protecting the aluminium from corrosion.

A new material for dental plates is said to have unusual strength, to retain its form indefinitely, and to have the natural color of skin tissue.

According to the National Industrial Conference Board, the industrial population of the United States has lost more than half of its 1929 purchasing power.

WITH THE SCIENCES THIS WEEK

ACOUSTICS

What sounds travel best through a fog? p. 291.

AGRICULTURE

What does Secretary Wallace consider the new job of the Department of Agriculture? p. 302.

ANATOMY

What is *pia mater*? p. 294. *Brains of Rats and Men*—C. Judson Herrick—Univ. of Chicago, 1926, \$3.

ANTHROPOLOGY

What is the most frequent color in babies' eyes? p. 299.

ARCHAEOLOGY

How far back have ruins of the Southwest been dated? p. 293. *Ancient Americans*—Emily C. Davis—Holt, 1931, \$3.50.

What did fish mascots mean to the Chaldeans? p. 291. *Ur of the Chaldees*—C. Leonard Woolley—Scribner's, 1930, \$2.50.

ASTRONOMY

During a lunar eclipse, why is the earth's shadow on the moon not entirely dark? p. 297.

AVIATION

What do aviators mean by "parasitic drag"? p. 292.

BACTERIOLOGY

Are swine a source of undulant fever? p. 297.

BIOLOGY

What animal can grow on food hitherto thought to be useful to green plants only? p. 303.

CHEMISTRY

How much damage at fires is caused by water? p. 297.

What dilution of alcoholized gasoline has been tested in this country? p. 301.

Why is the cyanide bath for copper-plating unsatisfactory? p. 296.

GENETICS

Can male- and female-producing spermatozoa be separated? p. 300.

IMMUNOLOGY

What is the pneumococcus? p. 291.

MEDICINE

How are cancerous and normal cells unlike? p. 300.

How does the new yeast-like organism attack men? p. 292.

What is the first sex hormone used to fight bacterial infection? p. 293.

METEOROLOGY

What are the characteristics of this year's tornadoes? p. 296. *Why the Weather?*—C. F. Brooks—Harcourt Brace, 1924, \$2.

PHYSICS

How old was Elihu Thompson when he built his first electrical device? p. 298.

PHYSIOLOGY

How do germs limit their own invasion of the body? p. 297.

Why do catfish nerves make good study material? p. 292.

PLANT PATHOLOGY

What is the second host to white pine blister rust? p. 303.

POPULATION

When will people return to the cities from the farms? p. 301.

PSYCHOLOGY

Do birds of a feather flock together? p. 293.

PUBLIC HEALTH

Why is cancer of the mouth and cheeks common in the Philippines? p. 296.

These curiosity-arousing questions show at a glance the wide field of scientific activity from which this week's news comes. Book references in italic type are not sources of information of the article, but are references for further reading. Books cited can be supplied by Book Dept., Science News Letter, at publishers' prices, prepaid in U. S.