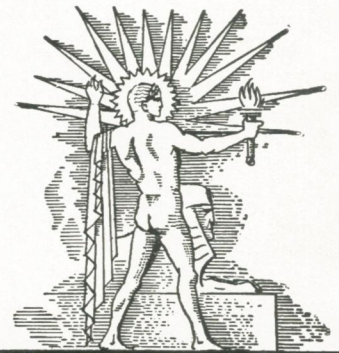
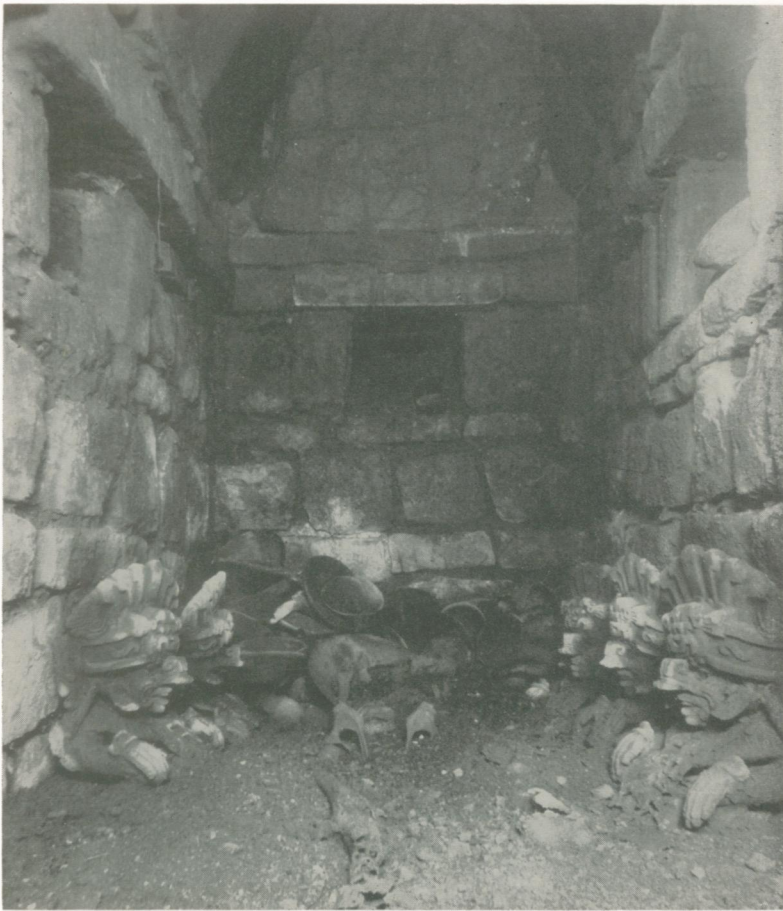


PRICE
15¢

SCIENCE NEWS LETTER

THE WEEKLY SUMMARY OF CURRENT SCIENCE ●



JUNE 9, 1934

Strange Resting Place

See Page 362

A

SCIENCE SERVICE PUBLICATION

SCIENCE NEWS LETTER

VOL. XXV

No. 687

The Weekly
Summary of  Current
Science

Published by

SCIENCE SERVICE

The Institution for the Popularization of Science organized under the auspices of the National Academy of Sciences, the National Research Council and the American Association for the Advancement of Science.

Edited by WATSON DAVIS

Subscription rates—\$5.00 a year postpaid; two years \$7.00; 15 cents a copy. Ten or more copies to same address, 5 cents a copy. Back numbers more than six months old, 25 cents.

Canadian and Foreign subscribers please add \$1 a year to regular subscription rates to cover postage.

In requesting change of address, please give your old address as well as the new one in notification to Circulation Department, SCIENCE NEWS LETTER, 21st and Constitution Ave., Washington, D. C., at least two weeks before change is to become effective.

Advertising rates furnished on application.

Board of Trustees of Science Service

Honorary President, William E. Ritter, University of California. Representing the American Association for the Advancement of Science, J. McKeen Cattell, *President*, Editor, Science, Garrison, N. Y.; Burton E. Livingston, Johns Hopkins University, Baltimore, Md.; Raymond Pearl, Director, Institute for Biological Research, Johns Hopkins University, Baltimore, Md. Representing the National Academy of Sciences, W. H. Howell, *Vice-President and Chairman of Executive Committee*, Johns Hopkins University, Baltimore, Md.; R. A. Millikan, Director, Norman Bridge Laboratory of Physics, California Institute of Technology, Pasadena, Calif.; David White, Senior Geologist, U. S. Geological Survey. Representing National Research Council, Vernon Kellogg, Secretary Emeritus, National Research Council, Washington, D. C.; C. G. Abbot, Secretary, Smithsonian Institution, Washington, D. C.; Harrison E. Howe, Editor of Industrial and Engineering Chemistry. Representing Journalistic Profession, John H. Finley, Associate Editor, New York Times; Mark Sullivan, Writer, Washington, D. C.; Marlen E. Pew, Editor of Editor and Publisher, New York City. Representing E. W. Scripps Estate, Harry L. Smithton, *Treasurer*, Cincinnati, Ohio; Robert P. Scripps, Scripps-Howard Newspapers, West Chester, Ohio; Thomas L. Sidlo, Cleveland, Ohio.

Director, Watson Davis; Staff writers: Frank Thone, Emily C. Davis, Jane Stafford, Marjorie Van de Water; Librarian, Minna Gill; Sales and Advertising Manager, Hallie Jenkins.

Copyright, 1934, by Science Service, Inc. Reproduction of any portion of the SCIENCE NEWS LETTER is strictly prohibited since it is distributed for personal, school, club or library use only. Newspapers, magazines and other publications are invited to avail themselves of the numerous syndicate services listed by Science Service, details and samples of which will gladly be sent on request.

Members of the American Association for the Advancement of Science have the privilege of subscribing to the SCIENCE NEWS LETTER at the reduced price of \$5 per year. Application for this privilege should be accompanied by privilege card obtained from the Permanent Secretary, A. A. S., Smithsonian Institution Building, Washington, D. C.

Publication Office, 1930 Clifton Ave., Baltimore, Md., Editorial and Executive Office, Constitution Ave. at 21st St., N. W., Washington, D. C.

Address all communications to Washington, D. C. Cable address: Scienserv, Washington.

Entered as second class matter October 1, 1926, at the post-office at Baltimore, Md., under the act of March 3, 1879. Established in mimeographed form March 13, 1922. Title registered as trade-mark, U. S. and Canadian Patent Offices.

DO YOU KNOW?

It is estimated that there are 2,300,000 stones in the Great Pyramid.

Dried apples made by a new process are comparable in flavor to fresh apples.

Indian farmers grew all three kinds of summer squashes—the crooknecks, scallops, and vegetable marrows.

How plants obtain their vitamins is being studied with hundreds of generations of duckweed, at Iowa State College.

When the most recent ice age was at its height there were 12,000,000 square miles of ice on earth; now there are only 6,000,000, most of that in the Antarctic.

Forsythia flowers are comparatively new in western lands, having been brought from Japan to Holland first about a century ago.

A new kind of maple sugar block is said not to become hard or mottled.

A new machine removes the bark neatly from such hardwoods as beech and maple.

Experimental efforts to raise silkworms in French Africa are reported to be making satisfactory progress.

The earth's core is 1,800 miles below the surface, is the estimate on the basis of earthquake wave travel time data.

A new steel welding process is said to produce steel pipe that is stronger and more lasting than that produced by present equipment.

A physical and chemical laboratory recently constructed in England is made of reinforced concrete, even to the cupboards and desks.

WITH THE SCIENCES THIS WEEK

AGRICULTURE

How do animals get selenium poisoning? p. 361.

ANTHROPOLOGY

Where is the orang-utan's "cowlick"? p. 363.

ARCHAEOLOGY

Did Mayan engineers know the principle of the true arch? p. 365.

How does the Government plan to aid research? p. 361.

What Mexican god was a water carrier? p. 362.

ASTRONOMY

What would enable city dwellers to enjoy the stars? p. 366.

AVIATION-METEOROLOGY

How much flying time can be saved by choosing the best flight path? p. 362.

ENGINEERING

For what purpose are heat and extreme cold both used? p. 360.

ENTOMOLOGY

What is the longest lived of insects? p. 359. *Fundamentals of Insect Life*—C. L. Metcalf and W. P. Flint—McGraw-Hill, 1932, \$4.

EUGENICS

Does a depression lower the marriage rate of college women? p. 360.

GENERAL SCIENCE

What do scientists hope for from an applied science of psychology? p. 356. *Science and Human Life*—J. B. S. Haldane—Harper, 1933, \$2.50.

MEDICINE

How can kidney secretion retard cancer in animals? p. 363.

How is the disease "brain stones" diagnosed? p. 361.

What is atabrine? p. 360.

MEDICINE—PSYCHIATRY

Can fright cause nausea? p. 360.

NATIONAL PARKS

What strange Indian tribe lives near America's newest national park? p. 365. *Book of the National Parks*—R. S. Yard—Scribner's, 1928, \$3.

PHYSICS

Who first suggested the use of pressure tube anemometers? p. 359.

Why is the study of sound important to those determining the wavelengths of radio stations? p. 360. *The Science of Musical Sounds*—D. C. Miller—Macmillan, 1926, \$2.50.

PHYSIOLOGY

What is the best temperature for the serving of beer? p. 362.

PSYCHIATRY

What fault is more common among children of large families? p. 361.

What should you do when you have a serious worry? p. 364. *Bodily Changes in Pain, Hunger, Fear and Rage*—W. B. Cannon—Appleton, 1929, \$3.

When should ogre stories not be told? p. 367.

Why do men shave? p. 364.

PSYCHIATRY—PHYSIOLOGY

What are the symptoms of oxygen lack? p. 355.

PSYCHOLOGY

How do Orientals picture receding parallel lines? p. 355.

What causes a dream of danger to life? p. 361.

What condition makes the moron unstable? p. 367.

RADIO

What causes high power stations on different wavelengths to interfere? p. 363.

ZOOLOGY—MEDICINE

Do cats like cream? p. 359.

These curiosity-arousing questions show at a glance the wide field of scientific activity from which this week's news comes. Book references in italic type are not sources of information for the article, but the references for further reading. Books cited can be supplied at Book Department, Science News Letter, at publishers' prices, postpaid in the United States.