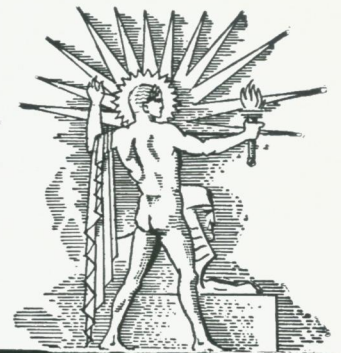
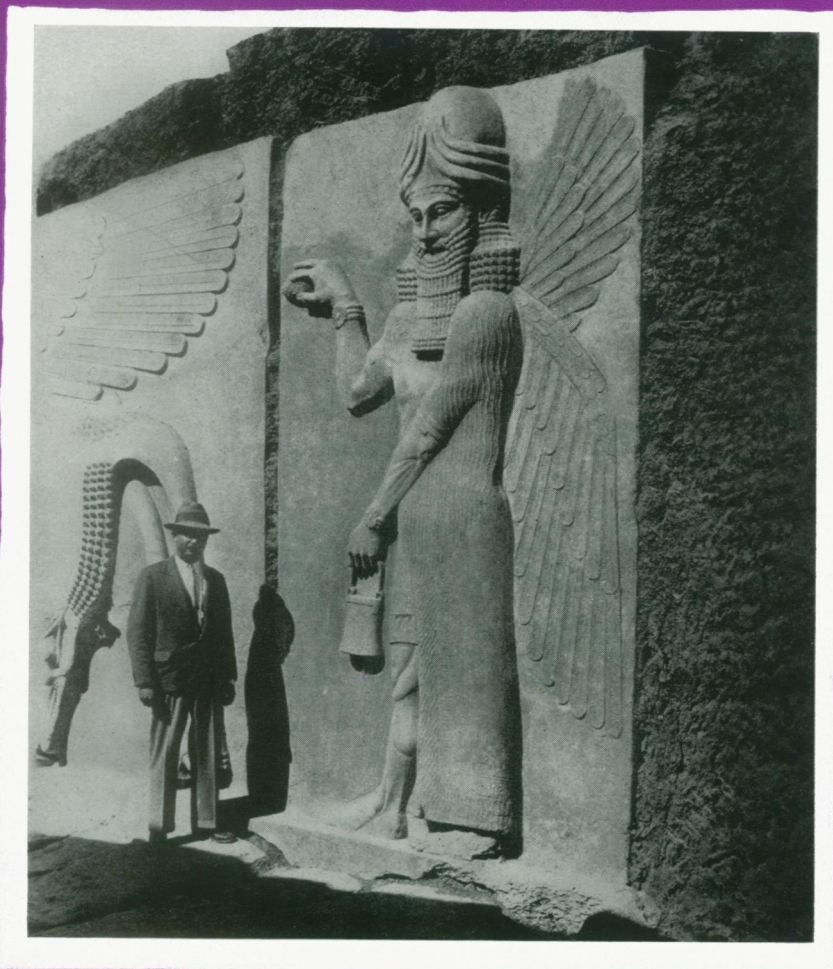


PRICE
15¢



SCIENCE NEWS LETTER

THE WEEKLY SUMMARY OF CURRENT SCIENCE •



AUGUST 11, 1934

Guardian of the Gate

See Page 87

A SCIENCE SERVICE PUBLICATION

SCIENCE NEWS LETTER

VOL. XXVI

No. 696

The Weekly  Current
Summary of Science

Published by

SCIENCE SERVICE

The Institution for the Popularization of Science organized under the auspices of the National Academy of Sciences, the National Research Council and the American Association for the Advancement of Science.

Edited by WATSON DAVIS

Subscription rates—\$5.00 a year postpaid; two years \$7.00; 15 cents a copy. Ten or more copies to same address, 5 cents a copy. Back numbers more than six months old, 25 cents.

Canadian and Foreign subscribers please add \$1 a year to regular subscription rates to cover postage.

In requesting change of address, please give your old address as well as the new one in notification to Circulation Department, SCIENCE NEWS LETTER, 21st and Constitution Ave., Washington, D. C., at least two weeks before change is to become effective.

Advertising rates furnished on application.

Board of Trustees of Science Service

Honorary President, Willam E. Ritter, University of California. Representing the American Association for the Advancement of Science, J. McKeen Cattell, *President*, Editor, Science, Garrison, N. Y.; Burton E. Livingston, Johns Hopkins University, Baltimore, Md.; Raymond Pearl, Director, Institute for Biological Research, Johns Hopkins University, Baltimore, Md. Representing the National Academy of Sciences, W. H. Howell, *Vice-President and Chairman of Executive Committee*, Johns Hopkins University, Baltimore, Md.; R. A. Millikan, Director, Norman Bridge Laboratory of Physics, California Institute of Technology, Pasadena, Calif.; David White, Senior Geologist, U. S. Geological Survey. Representing National Research Council, Vernon Kellogg, Secretary Emeritus, National Research Council, Washington, D. C.; C. G. Abbot, Secretary, Smithsonian Institution, Washington, D. C.; Harrison E. Howe, Editor of Industrial and Engineering Chemistry, Washington, D. C. Representing Journalistic Profession, John H. Finley, Associate Editor, New York Times; Mark Sullivan, Writer, Washington, D. C.; Marlen E. Pew, Editor of Editor and Publisher, New York City. Representing E. W. Scripps Estate, Harry L. Smithton, *Treasurer*, Cincinnati, Ohio; Robert P. Scripps, Scripps-Howard Newspapers, West Chester, Ohio; Thomas L. Sidlo, Cleveland, Ohio.

Director, Watson Davis; Staff writers: Frank Thone, Emily C. Davis, Jane Stafford, Marjorie Van de Water, Robert Potter, H. C. Rowland, Jr.; Librarian, Minna Gill; Sales and Advertising Manager, Hallie Jenkins.

Copyright, 1934, by Science Service, Inc. Reproduction of any portion of the SCIENCE NEWS LETTER is strictly prohibited since it is distributed for personal, school, club or library use only. Newspapers, magazines and other publications are invited to avail themselves of the numerous syndicate services listed by Science Service, details and samples of which will gladly be sent on request.

Members of the American Association for the Advancement of Science have the privilege of subscribing to the SCIENCE NEWS LETTER at the reduced price of \$3 per year. Application for this privilege should be accompanied by privilege card obtained from the Permanent Secretary, A. A. S., Smithsonian Institution Building, Washington, D. C.

Publication Office, 1930 Clifton Ave., Baltimore, Md., Editorial and Executive Office, Constitution Ave., at 21st St., N. W., Washington, D. C.

Address all communications to Washington, D. C. Cable address: Scienserv, Washington.

Entered as second class matter October 1, 1926, at the post-office at Baltimore, Md., under the act of March 3, 1879. Established in mimeographed form March 13, 1922. Title registered as trade-mark, U. S. and Canadian Patent Offices.

DO YOU KNOW?

About 100 persons die every year in the United States from rabies.

Tumors may develop and become very large in certain parts of the brain without causing any mental disturbance.

The cooling process which the earth is undergoing is extremely slow because of the insulating effect of the thick crust.

Yellowstone Park added a couple of new weather records this year by having the driest May and the wettest June in its history.

By moving pictures taken at the rate of 72 exposures per second, a scientist has studied distribution of pressure in the human foot at successive moments in walking.

An eye specialist has perfected non-shatterable goggles which protect mountain climbers and Polar explorers against snow blindness, yet provide full range of vision.

The plant life of the Sonora Desert, part of the arid region of North America, is to be intensively studied by scientists.

It is expected that 35,000,000 people will visit the national forests of this country in the course of the current year.

Men of the late Stone Age in Europe had for domestic animals the cow, pig, sheep, goat, and dog, and possibly the horse.

It is estimated that nearly one person in three in the United States over forty years of age is suffering from some chronic disease.

Experiments indicate that the liability of wood to attack by certain beetles and fungi is in proportion to the amount of starch remaining in the sap wood.

The year ending May 31, 1934, was the driest on record for Indiana, Illinois, Wisconsin, Minnesota, Iowa, Nebraska, Missouri, South Dakota, and North Dakota.

WITH THE SCIENCES THIS WEEK

ANTHROPOLOGY

Are stone mortars widely used by primitive peoples? p. 83.

How long has man lived on the earth? p. 93.

Why are the new-found tribe of Papuans called "Semites"? p. 83.

ARCHAEOLOGY

When did King Sargon reign? p. 87. *The Makers of Civilization in Race History—L. A. Waddell—London, Luzac & Co. 1929, 28 shillings.*

ASTRONOMY

At what hours are the meteors most numerous? p. 94.

ENTOMOLOGY

What happens to termites when they are deprived of fungus? p. 89. *Termites and Termite Control—Termite Investigations Committee. Chas. A. Kofoid, Editor-in-Chief—Univ. of California, 1934, \$5.*

ETHNOLOGY

Where did the Morris Dancers do their dancing? p. 90.

FORESTRY

Where has most of the damage from this year's forest fires been centered? p. 84.

GENERAL SCIENCE

Does industry support research in universities? p. 88.

MEDICINE

What disease is more common among New York children than measles? p. 89.

ORNITHOLOGY

Does the pelican really store fish in his beak? p. 93.

PALEONTOLOGY

What evidence has been found of an ancient "midget monster"? p. 86. *Vertebrate Paleon-*

tology—A. S. Romer—Univ. of Chicago, 1933, \$5.

PHYSICS

How rapidly does the weather change on Mt. Evans? p. 89.

What was the official "ceiling" of the "Explorer's flight"? p. 87.

PHYSIOLOGY

Where do birds obtain their supply of vitamin C? p. 88.

PSYCHOLOGY

Is color of hair any indication of temper? p. 86.

PUBLIC HEALTH

How is immunity to typhoid fever acquired? p. 92.

What city in the United States has the greatest number of suicides? p. 88.

What insect carries dengue fever? p. 88.

What precautions may be taken to avoid typhoid fever? p. 89.

RADIO

How can automatic records be made of police radio calls? p. 92.

ZOOLOGY

What is a bear's reaction to tear gas? p. 85. *Our Wilderness Neighbors—Dorr G. Yeager—McClurg, 1931, \$1.25.*

Why are rangers having difficulty in counting the game in Yellowstone? p. 84.

These curiosity-arousing questions show at a glance the wide field of scientific activity from which this week's news comes. Book references in italic type are not sources of information for the article, but the references for further reading. Books cited can be supplied at Book Department, Science News Letter, at publishers' prices, postpaid in the United States.