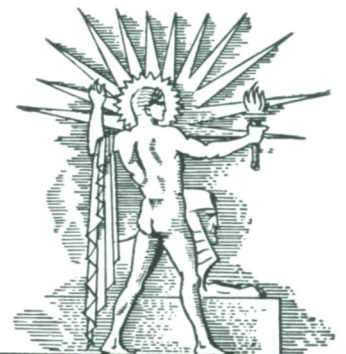
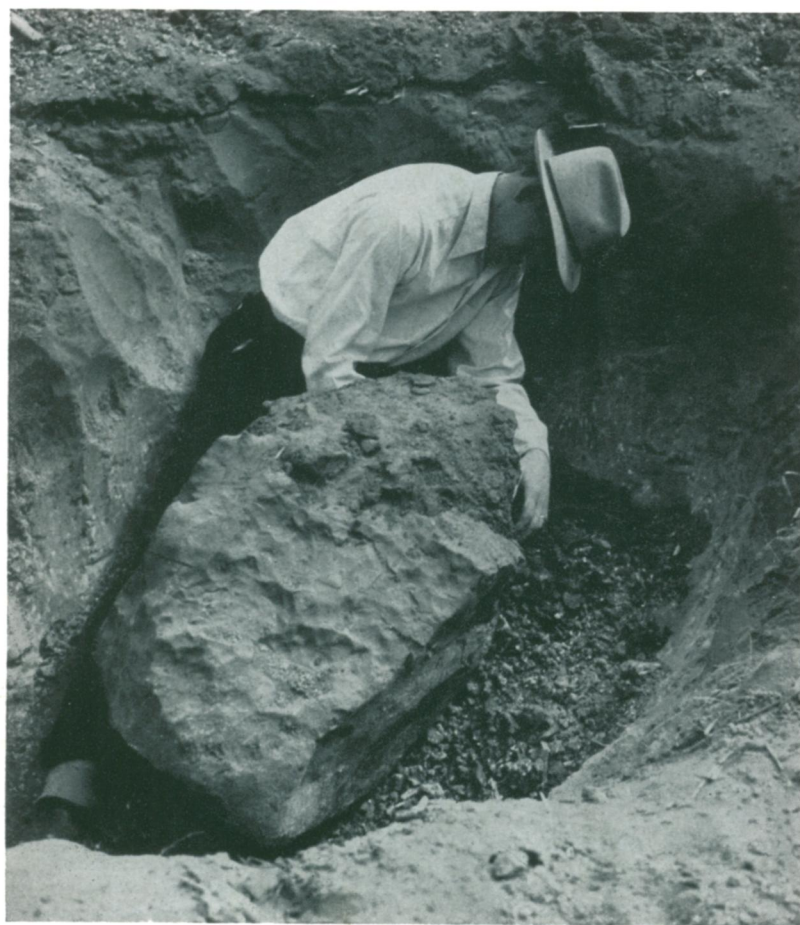


PRICE
15¢

SCIENCE NEWS LETTER

THE WEEKLY SUMMARY OF CURRENT SCIENCE •



APRIL 13, 1935

Stone From the Sky
See Page 227

A

SCIENCE SERVICE PUBLICATION

SCIENCE NEWS LETTER

VOL. XXVII



No. 731

The Weekly Summary of
Current Science

Published Every Saturday by

SCIENCE SERVICE

THE INSTITUTION FOR THE POPULARIZATION OF SCIENCE organized 1921 as a non-profit corporation, with trustees nominated by the National Academy of Sciences, the National Research Council, the American Association for the Advancement of Science, the E. W. Scripps Estate and the journalistic profession.

Edited by WATSON DAVIS

Subscription rates—\$5.00 a year postpaid; two years \$7.00; 15 cents a copy. Ten or more copies to same address, 5 cents a copy. Back numbers more than six months old, 25 cents.

Canadian subscribers please add 50 cents a year, foreign subscribers 75 cents a year to regular subscription rates to cover postage.

Members of the American Association for the Advancement of Science have the privilege of subscribing to the SCIENCE NEWS LETTER at the reduced price of \$3 per year. Application for this privilege should be accompanied by privilege card obtained from the Permanent Secretary, A. A. A. S., Smithsonian Institution Building, Washington, D. C.

In requesting change of address, please give your old address as well as the new one in notification to Circulation Department, SCIENCE NEWS LETTER, 2101 Constitution Ave., Washington, D. C., at least two weeks before change is to become effective.

Copyright, 1935, by Science Service, Inc. Reproduction of any portion of the SCIENCE NEWS LETTER is strictly prohibited. Newspapers, magazines and other publications are invited to avail themselves of the numerous syndicate services issued by Science Service.

Publication Office, 1930 Clifton Ave., Baltimore, Md., Editorial and Executive Office, 2101 Constitution Ave., Washington, D. C.

Address all communications to Washington, D. C. Cable address: Scienserv, Washington.

Entered as second class matter October 1, 1926, at the post-office at Baltimore, Md., under the act of March 3, 1879. Established in mimeographed form March 13, 1922. Title registered as trade-mark, U. S. and Canadian Patent Offices. Advertising rates furnished on application. Member Audit Bureau of Circulations.

Board of Trustees of Science Service

Honorary President, William E. Ritter, University of California. Representing the American Association for the Advancement of Science, J. McKeen Cattell, *President*, Editor, Science, Garrison N. Y.; Burton E. Livingston, Johns Hopkins University, Baltimore, Md.; Raymond Pearl, Director, Institute for Biological Research, Johns Hopkins University, Baltimore, Md. Representing the National Academy of Sciences, W. H. Howell, *Vice-President and Chairman of Executive Committee*, Johns Hopkins University, Baltimore, Md.; R. A. Millikan, Director, Norman Bridge Laboratory of Physics, California Institute of Technology, Pasadena, Calif.; Representing National Research Council, Vernon Kellogg, Secretary Emeritus, National Research Council, Washington, D. C.; C. G. Abbot, Secretary, Smithsonian Institution, Washington, D. C.; Harrison E. Howe, Editor of Industrial and Engineering Chemistry, Washington, D. C. Representing Journalistic Profession, John H. Finley, Associate Editor, New York Times; Mark Sullivan, Writer, Washington, D. C.; Marlen E. Pew, Editor of Editor and Publisher, New York City. Representing E. W. Scripps Estate, Harry L. Smithton, *Treasurer*, Cincinnati, Ohio; Robert P. Scripps, Scripps-Howard Newspapers, West Chester, Ohio; Thomas L. Sidlo, Cleveland, Ohio.

Staff of Science Service

Director, Watson Davis; Staff Writers: Frank Thone, Emily C. Davis, Jane Stafford, Marjorie Van de Water, Robert Potter; Astronomy writer, James Stokley; London correspondent, Donald Caley. Correspondents in principal cities and centers of research, Librarian, Minna Gill; Sales and Advertising Manager, Hallie Jenkins.

DO YOU KNOW?

In line with its policy of self-sufficiency, Germany is recovering sulphur from fuel gases, as a by-product at coke ovens.

The number of persons killed in accidents last year in this country was 5,000 more than the entire population of Nevada (94,000).

Young men in the Civilian Conservation Corps have been gaining, on the average, from seven to eleven pounds during the first two months in camp.

The amount of lead residue from poisonous insect sprays permitted on apples and pears shipped in interstate commerce has been reduced by the Government.

Paul Revere made the important contribution to American science and industry of discovering by experiments how to make copper malleable enough to be hammered hot, a secret previously guarded by a few British manufacturers.

The Dutch elm disease, which is menacing America's elms, may hide in trees for ten years without visible sign.

The idea of building city streets on two levels was an engineering problem that attracted the great artist Leonardo da Vinci.

It is reported from Germany that a new process has been found for copper plating on aluminum so as to produce a desirable coating without electrolysis.

A chance seedling on a West Virginia farm has become a new apple variety, Golden Delicious, which West Virginia considers a notable contribution to the apple industry.

Montezuma's palace in Mexico was described by the Spanish invaders as having a hundred bedrooms and a hundred baths—heralding, says one British anthropologist, the "great American ideal."

WITH THE SCIENCES THIS WEEK

Most articles are based on communications to Science Service or papers before meetings, but where published sources are used they are referred to in the articles.

ANTHROPOLOGY

How are American Indians changing in physique? p. 232.

ARCHAEOLOGY

How long ago did the people of Mesopotamia learn to write? p. 234.

Who located the spot where the Spartans made their last stand? p. 232.

ASTRONOMY

How large is the latest meteorite found in Kansas? p. 227.

BACTERIOLOGY

How is the arsenic in insecticides made harmless in the soil? p. 238.

BIOLOGY

Why can rabbits not be raised in a test tube? p. 229.

CHEMISTRY

How much heavy oxygen water is now in existence? p. 227.

What new source for gasoline is being used in Germany? p. 228.

What sort of wealth may be obtained from peat? p. 232.

CRIMINOLOGY

With what weapon does a woman commit murder? p. 232.

FORESTRY

What new use has the rubber stamp? p. 232.

GEOPHYSICS

How do scientists learn of the rocks in the interior of the earth? p. 233.

MEDICINE

How has cancer immunity been produced in mice? p. 231.

What treatments are used for "sleeping sickness"? p. 228.

PALEONTOLOGY

What is the largest mammal that ever walked the earth? p. 231.

PHYSICS

How cold is it at the base of the stratosphere? p. 236.

How is sodium made radioactive? p. 231.

What candlepower can be produced from present navigation lamps? p. 229.

PHYSIOLOGY

In what way does heavy water affect the heart rate? p. 233.

What honor was recently conferred on Dr. Willard M. Allen? p. 233.

PLANT PATHOLOGY

What use has hydrogen peroxide in the garden? p. 232.

PSYCHIATRY

What is the most common of mental ills? p. 230.

PSYCHOLOGY

What is the new emphasis of psychological research in Russia? p. 239.

ROENTGENOLOGY

How can physicians look within the human body and see the organs in their proper perspective? p. 227.

ZOOLOGY

Which is faster, stallion or mare? p. 230.