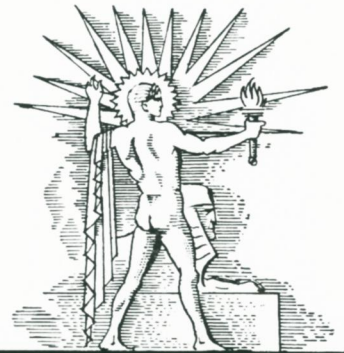
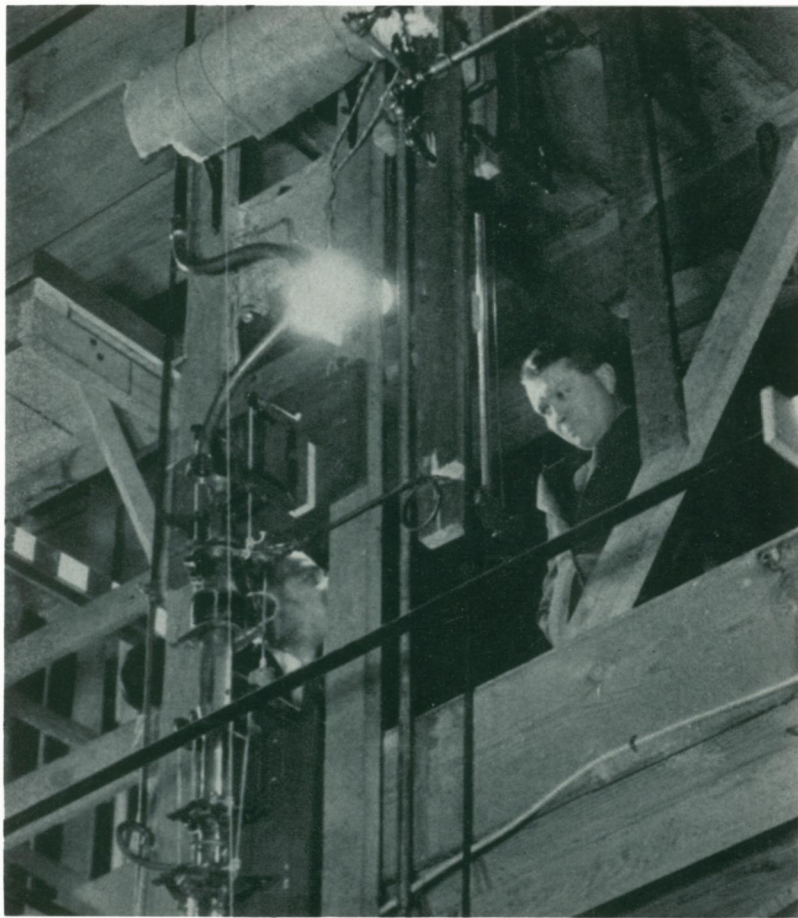


PRICE
15¢

SCIENCE NEWS LETTER

THE WEEKLY SUMMARY OF CURRENT SCIENCE ●



MAY 18, 1935

Heavy Water Factory

See Page 320

A

SCIENCE SERVICE PUBLICATION

SCIENCE NEWS LETTER

VOL. XXVII



No. 736

The Weekly Summary of

Current Science

Published Every Saturday by

SCIENCE SERVICE

THE INSTITUTION FOR THE POPULARIZATION OF SCIENCE organized 1921 as a non-profit corporation, with trustees nominated by the National Academy of Sciences, the National Research Council, the American Association for the Advancement of Science, the E. W. Scripps Estate and the journalistic profession.

Edited by WATSON DAVIS

Subscription rates—\$5.00 a year postpaid; two years \$7.00; 15 cents a copy. Ten or more copies to same address, 5 cents a copy. Back numbers more than six months old, 25 cents.

Canadian subscribers please add 50 cents a year, foreign subscribers 75 cents a year to regular subscription rate to cover postage.

Members of the American Association for the Advancement of Science have the privilege of subscribing to the SCIENCE NEWS LETTER at the reduced price of \$3 per year. Application for this privilege should be accompanied by privilege card obtained from the Permanent Secretary, A.A.S., Smithsonian Institution Building, Washington, D. C.

In requesting change of address, please give your old address as well as the new one in notification to Circulation Department, SCIENCE NEWS LETTER, 2101 Constitution Ave., Washington, D. C., at least two weeks before change is to become effective.

Copyright, 1935, by Science Service, Inc. Reproduction of any portion of the SCIENCE NEWS LETTER is strictly prohibited. Newspapers, magazines and other publications are invited to avail themselves of the numerous syndicate services issued by Science Service.

Publication Office, 1930 Clifton Ave., Baltimore, Md., Editorial and Executive Office, 2101 Constitution Ave., Washington, D. C.

Address all communications to Washington, D. C. Cable address: Scienserve, Washington.

Entered as second class matter October 1, 1926, at the post-office at Baltimore, Md., under the act of March 3, 1879. Established in mimeographed form March 13, 1922. Title registered as trademark, U. S. and Canadian Patent Offices. Advertising rates furnished on application.

Member Audit Bureau of Circulations.

Board of Trustees of Science Service

Honorary President, William E. Ritter, University of California. *Honorary Vice-President*, Vernon Kellogg, National Research Council. Representing the American Association for the Advancement of Science, J. McKeen Cattell, *President*, Editor, Science, Garrison, N. Y.; Burton E. Livingston, Johns Hopkins University, Baltimore, Md.; Henry B. Ward, permanent secretary, A.A.S. Representing the National Academy of Sciences, W. H. Howell, *Vice-President and Chairman of Executive Committee*, Johns Hopkins University, Baltimore, Md.; R. A. Millikan, Director, Norman Bridge Laboratory of Physics, California Institute of Technology, Pasadena, Calif.; Harlow Shapley, Director, Harvard College Observatory, Cambridge, Mass. Representing National Research Council, Ludvig Hektoen, John McCormick Institute for Infectious Diseases, Chicago, Ill.; C. G. Abbot, Secretary, Smithsonian Institution, Washington, D. C.; Harrison E. Howe, Editor of Industrial and Engineering Chemistry, Washington, D. C. Representing Journalistic Profession, John H. Finley, Associate Editor, New York Times; Mark Sullivan, Writer, Washington, D. C.; Marlen E. Pew, Editor of Editor and Publisher, New York City. Representing E. W. Scripps Estate, Harry L. Smithon, *Treasurer*, Cincinnati, Ohio; Robert P. Scripps, Scripps-Howard Newspapers, West Chester, Ohio; Thomas L. Sidlo, Cleveland, Ohio.

Staff of Science Service

Director, Watson Davis; Staff Writers: Frank Thone, Emily C. Davis, Jane Stafford, Marjorie Van de Water, Robert Potter; Astronomy writer, James Stokley; London correspondent, Donald Caley. Correspondents in principal cities and centers of research. Librarian, Minna Gill; Sales and Advertising Manager, Hallie Jenkins.

DO YOU KNOW?

Bees flourish notably in dry regions of the world, observes one entomologist.

Recent records in Montana show that when the air temperature was 19 below zero the soil surface under a four-inch snow blanket was almost 18 degrees above zero.

Rubber growers advocate many uses of rubber on farms, from rubber stalls and floorings in cow sheds to rubber rims that make churns less noisy.

The camel's extraordinary ability to get along without water is believed due to cells for storing water in its stomach, and to the fat-storing hump, a potential source of much metabolic water.

A University of California psychologist finds that children and older people attending moving picture shows are not passive and mentally dormant, but do remember a surprising amount of information later—hence the movies are not mere places of entertainment, but play a big role in teaching.

About seven persons out of 100 show a natural immunity to dental decay.

In 1800, a Frenchman conceived the idea of making an endless web of paper by introducing a water suspension of pulp on to an endless moving belt of wire.

Fires set by incendiaries in national forests have been reduced nearly 50 per cent. since the organization of the Civilian Conservation Corps.

The Hadassah Medical Organization has reduced the eye disease trachoma among children attending Jewish schools in Palestine from 34 to 6.3 per cent. in 17 years.

California recently experienced a cobra scare, when a snake carcass aroused fear that India's deadly snake had been introduced; however, the zoological verdict was that a fish head lodged in the neck caused the dilated cobra-like look, and the specimen was a harmless garter snake.

WITH THE SCIENCES THIS WEEK

Most articles are based on communications to Science Service or papers before meetings, but where published sources are used they are referred to in the articles.

ANIMAL PSYCHOLOGY

Do canaries have to be taught to sing? p. 321.

ARCHAEOLOGY

Were there gold-diggers in ancient Babylonia? p. 316.

ASTRONOMY

What shape is the Milky Way galaxy? p. 319.

BOTANY

How did the American Indians judge good corn? p. 320.

Where do vines grow best? p. 325.

CARTOGRAPHY

How are relief models made? p. 322.

GASTRONOMY

Who are the greatest fish eaters? p. 321.

GENERAL SCIENCE

Who are now the Science Service trustees? p. 327.

MARINE ENGINEERING

What commercial use has a counterpart of the "bathysphere"? p. 326.

MEDICINE

Does vitamin C aid in treatment of rheumatic fever? p. 317.

How can the patient's own blood be used to defeat blood poisoning? p. 320.

How does liver keep pernicious anemia patients alive and well? p. 317.

Should expectant mothers eat meat? p. 315.

What are the causes of rheumatism? p. 318.

What causes blood to clot? p. 315.

What causes influenza? p. 321.

What medicinal use has the light gas helium? p. 318.

ORNITHOLOGY

What happens when mockingbirds hear a record of the song of one of their kind? p. 316.

PHARMACOLOGY

Who received the Remington Honor Medal for 1935? p. 316.

PHYSICS

How can light be turned into music? p. 319.

How can stratosphere rockets be propelled? p. 320.

PHYSIOLOGY

How does nicotine stop breathing? p. 324.

Should your free leg swing when your knees are crossed? p. 318.

What is the chemical explanation of mother love? p. 318.

Why is an intermittent loud sound more strain on the ears than a continuous one? p. 321.

PSYCHOLOGY

Are criminals "sissies"? p. 320.

POPULATION

What effect has poverty on the birth rate? p. 325.