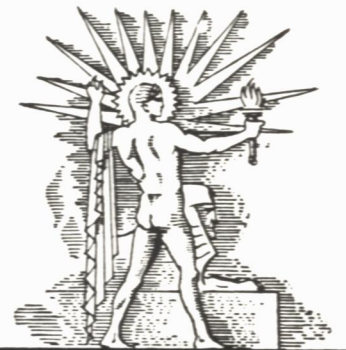
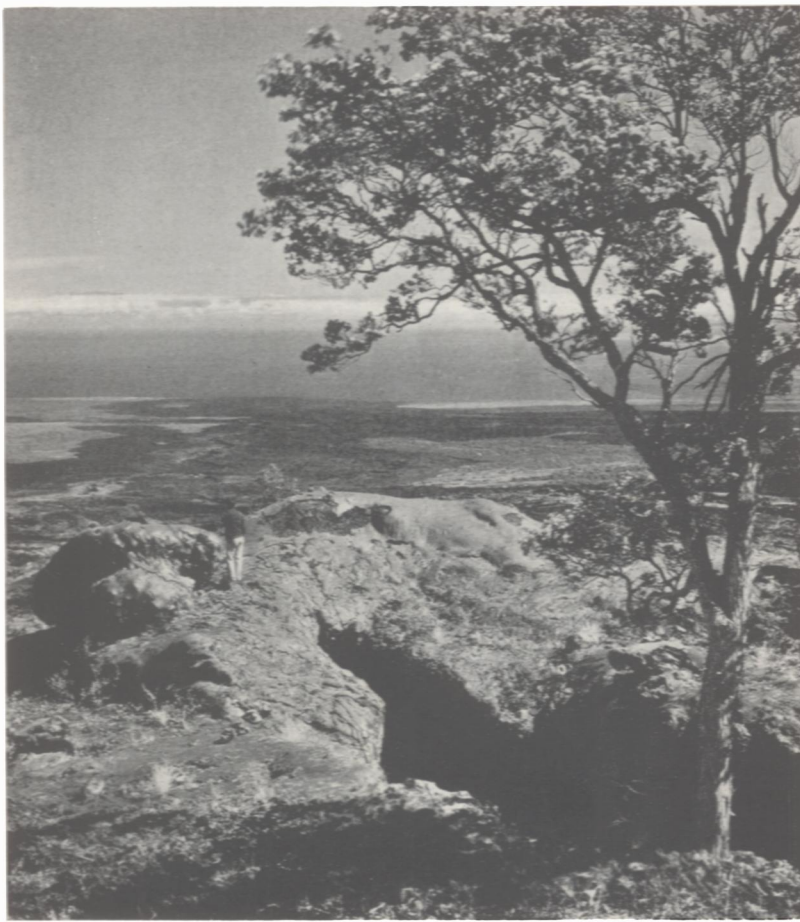


PRICE
15¢

SCIENCE NEWS LETTER

THE WEEKLY SUMMARY OF CURRENT SCIENCE ●



October 2, 1937

Lava

See Page 218

A S C I E N C E S E R V I C E P U B L I C A T I O N

SCIENCE NEWS LETTER

Vol. XXXII



No. 860

The Weekly Summary of

Current Science

Published Every Saturday by
SCIENCE SERVICE

2101 Constitution Avenue
Washington, D. C.

THE INSTITUTION FOR THE POPULARIZATION OF SCIENCE organized 1921 as a non-profit corporation, with trustees nominated by the National Academy of Sciences, the National Research Council, the American Association for the Advancement of Science, the E. W. Scripps Estate and the journalistic profession.

Edited by WATSON DAVIS

Subscription rates—\$5.00 a year postpaid; two years \$7.00; 15 cents a copy. Ten or more copies to same address, 5 cents a copy. Back numbers more than six months old, 25 cents.

Canadian subscribers please add 50 cents a year, foreign subscribers 75 cents a year to regular subscription rate to cover postage.

Members of the American Association for the Advancement of Science have the privilege of subscribing to SCIENCE NEWS LETTER at the reduced price of \$3 per year. Application for this privilege should be accompanied by privilege card obtained from the Permanent Secretary, A.A.A.S., Smithsonian Institution Building, Washington, D. C.

In requesting change of address, please give your old address as well as the new one in notification to Circulation Department, SCIENCE NEWS LETTER, 2101 Constitution Ave., Washington, D. C., at least two weeks before change is to become effective.

Copyright, 1937, by Science Service, Inc. Reproduction of any portion of the SCIENCE NEWS LETTER is strictly prohibited. Newspapers, magazines and other publications are invited to avail themselves of the numerous syndicate services issued by Science Service.

Cable address: Scienservc, Washington. Entered as second class matter at the post-office at Washington, D. C., under the act of March 3, 1879. Established in mimeographed form March 13, 1922. Title registered as trademark, U. S. and Canadian Patent Offices.

Advertising rates furnished on application. Member Audit Bureau of Circulations.

Board of Trustees of Science Service

Honorary President: William E. Ritter, University of California; *Honorary Vice-President,* Vernon Kellogg, National Research Council, Representing the American Association for the Advancement of Science, J. McKeen Cattell, Editor, Science, Garrison, N. Y.; Henry B. Ward, University of Illinois, Urbana, Ill.; Edwin G. Conklin, *President,* American Philosophical Society, Philadelphia, Pa. Representing the National Academy of Sciences, W. H. Howell *Vice-President and Chairman of Executive Committee,* Johns Hopkins University, Baltimore, Md.; R. A. Millikan, Director, Norman Bridge Laboratory of Physics, California Institute of Technology, Pasadena, Calif.; Harlow Shapley, Director, Harvard College Observatory, Cambridge, Mass. Representing National Research Council, Ludvig Hektoen, John McCormick Institute for Infectious Diseases, Chicago, Ill.; C. G. Abbot, Secretary, Smithsonian Institution, Washington, D. C.; Harrison E. Howe, Editor of Industrial and Engineering Chemistry, Washington, D. C. Representing Journalistic Profession, John H. Finley, Editor, New York Times; Mark Sullivan, Writer, Washington, D. C.; Dean Carl W. Ackerman, Columbia University Graduate School of Journalism, New York City. Representing E. W. Scripps Estate, Harry L. Smithton, *Treasurer,* Cincinnati, Ohio; Robert P. Scripps, Scripps-Howard Newspapers, West Chester, Ohio; Warren S. Thompson, Miami University, Oxford, Ohio.

Staff of Science Service

Director, Watson Davis; Staff Writers: Frank Thone, Emily C. Davis, Jane Stafford, Marjorie Van de Water, Robert Potter; Astronomy writer, James Stokley. Correspondents in principal cities and centers of research. Librarian, Minna Gill; Sales and Advertising Manager, Hallie Jenkins.

DO YOU KNOW?

One-half of the shade trees of New England are elms.

A tire designed to resist side skidding has been produced for trailers.

Silkworms raised in Kent, England, furnished silk for the velvet robe worn at the recent coronation by Queen Elizabeth.

Highway mileage in China doubled from 1930 to 1935, and roads are being built there at the rate of 15,000 miles a year.

A one-can meal is in prospect, since a patent has been granted on a tin with compartments for packing an assortment of foods.

A chemist and artist working together have found a chemical spray with which a wall can be kept moist for 56 hours; thus enabling mural painters to work over twice as long on a surface before it is too dry to take the colors.

British archaeologists say that more than 30 places have been suggested as the site of the great battle of Brunanburh, fought by king Athelstan against a Viking contender for the throne of York, a thousand years ago—A. D. 937.

An Arab geographer of the twelfth century, describing Britain, said it had fine people but "perpetual winter reigns there."

British naturalists are studying the migration of butterflies, by marking with little spots of paint as many as they can catch.

Tuberculosis is believed rare among wild animals in their natural state; but a British scientist has found this disease in 134 field mice.

An albino tarpon, a 27-pound fish with white skin and pink eyes, was caught off the west coast of Florida in 1936 and is believed unique in fishing annals.

A method of filtering fluorine out of drinking water, at a cost of half a cent a gallon, is expected to help prevent the dental condition known as mottled enamel due to fluorine.

Almost 200 clay sherds marked with the name Themistocles have been unearthed in a well in Athens, and are believed to be unused ballots prepared by Themistocles' enemies for readiness in the voting that banished the famous leader.

WITH THE SCIENCES THIS WEEK

Most articles are based on communications to Science Service or papers before meetings, but where published sources are used they are referred to in the article.

ANTHROPOLOGY

Who discovered Japan? p. 211.

ARCHAEOLOGY

Did prehistoric Montana have cave dwellers? p. 216.

ASTRONOMY

Can a whole system of stars be linked to another by gravity? p. 215.

BOTANY

How many plants were used by Indians for food? p. 222.

CHEMISTRY

How does war in China threaten to handicap America's paint industry? p. 216.

Who was the "Father of Modern Industrial Chemistry"? p. 214.

ENTOMOLOGY

What is the language of the bees? p. 217.

MEDICINE

Do you have cancer cells in your body? p. 217.

How does insulin affect mental processes? p. 211.

What industrial hazard is provided by the Diesel engine? p. 222.

What "untoward reactions" may follow use of medicine's new dye weapon against infections? p. 216.

PHYSICS

What metal has just been discovered to be twins? p. 214.

PSYCHOLOGY

Is war a mental disease? p. 211.

PUBLIC HEALTH

What diseases have increased in China as a result of military activity? p. 212.

Is cholera likely to spread from China to the United States? p. 221.

RADIOLOGY

What danger is attached to giving cod liver oil to a baby? p. 213.

Why do patients sometimes have to wear gas masks? p. 213.

SAFETY ENGINEERING

How do most of the night grade-crossing accidents occur? p. 212.

VITAL STATISTICS

At what age is the pedestrian in most danger from automobile injury? p. 216.

VOLCANOLOGY

Can volcanic eruptions be predicted? p. 218.