

## MEDICINE

# Insulin Shock Slows Down Brain Activity, It Is Found

Thinking Part of Brain, Which Requires Largest Fuel Supply, Is First To Be Affected By the Injection

**P**ATIENT suffers from severe form of insanity, schizophrenia, called "split personality" by the man in the street. Viennese doctor finds that powerful shock from insulin, life-saver to diabetes, effects remarkable cures.

Thus the first two chapters of "perhaps the most important advance in the treatment of mental disease in many years." Now a third chapter is added:

Insulin shock slows brain, particularly conscious regions, down to tiny fraction of former activity.

This was the report (*Science*, Sept. 17) by four psychiatrists, Prof. Harold E. Himwich and Dr. J. F. Fazekas of Yale University and Drs. Karl M. Bowman and Joseph Wortis of Bellevue Hospital. Their work may lead to an explanation not only of the cure but of the way in which the brain works as well.

Tests on the blood entering and leaving the brain during the shock revealed that the supply of glucose, the brain's fuel, and oxygen with which to burn that glucose, are reduced by two-thirds,

the four research scientists declare.

Sixty-five per cent. of the oxygen and almost five-sixths of the sugar ordinarily present are not available to the brain in the presence of the shock dose of insulin. "Insulin, in reducing the blood sugar, deprives the brain of its food-stuff," thus slowing down the rate of activity of the brain.

Metabolism of the entire brain, the authors remark, is depressed by the injection of the insulin, but since the rate of activity differs in different parts of the brain, it is manifested first in that part of the brain requiring the largest fuel supply, the cerebral hemispheres, where conscious actions are controlled.

Support for this view of the effect of the radical but effective insulin cure is found in the fact that coincident with the shock and the slowing down of the brain, normal reflexes gradually give way to a state in which the patient makes no response to ordinary stimuli, the four find.

*Science News Letter, October 2, 1937*

## PSYCHOLOGY

# War Seen as Mental Ill Attacking Whole Nations

**W**AR IS a mental disease that attacks nations instead of individuals, in the opinion of scientists taking part in a special session of the American Psychological Association meeting. The special session was devoted to a consideration of human conflict.

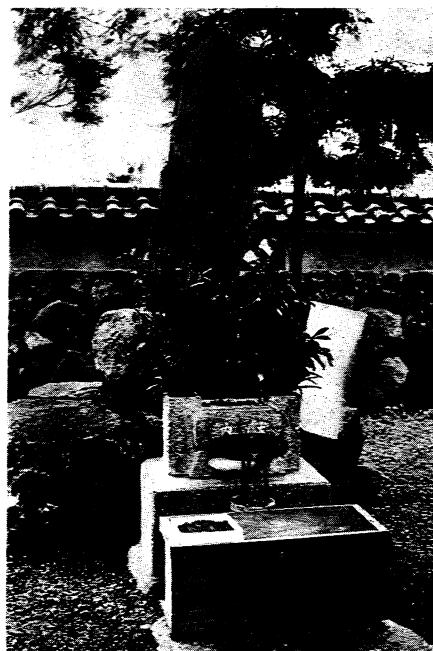
Society's mental ills, like those of the individual, are caused by the frustration or inability to satisfy certain deep-seated human needs, these scientists believe.

"Labor strife, class antagonisms, and wars between nations are as much products of these frustrations as are the emotional maladjustments and neuroses of the individual," declared Dr. Robert R. Sears, of Yale University's Institute of Human Relations.

Much progress toward the prevention of mental disease in the individual has been made by the recent mental hygiene program, but prevention of the mental diseases afflicting nations and groups of people in society must, except for a lucky accident, wait for a better scientific understanding of their causes and the natural laws controlling them. Dr. Sears called the reports at the special session a beginning to that end.

"In this era of violently conflicting theories about human affairs, with opinion and prejudice fighting for control over reason, this return to experimental method cannot help but be a healthy influence," Dr. Sears said.

*Science News Letter, October 2, 1937*



**TOMB OF DISCOVERER**

*Here lies Hsu Shih, a Chinese alchemist who sought magical islands where life would be eternal. He found Japan.*

## ANTHROPOLOGY

# Scientific Expedition From China Helped Found Japan

**O**NE ASPECT of the present conflict between China and Japan is that the latter with its latest technologic aids to warfare, represents the return, in a 2,000-year delayed sense, of ancient Chinese scientists.

While the Greeks coined the present word for alchemy, written records show that the Chinese practiced alchemy too and that there, as in the western world, science got its start in searches for the elixir of life and the transmutation of base metals to gold.

Emperor Shih Huang Ti, whose Great Wall is among the battle sites of the present-day conflict, was among those who sought, through his alchemists, to find the secret of immortality.

In a recent report to the American Chemical Society Prof. Tenney L. Davis of Massachusetts Institute of Technology, aided by the Japanese scientist Rokuro Nakaseko, described from old manuscripts how Emperor Ti was influenced by two of his favored alchemists to send a large expedition to search for and colonize three mythical islands whereon the inhabitants would dwell in peace and with immortal life.

The expedition sailed but never re-