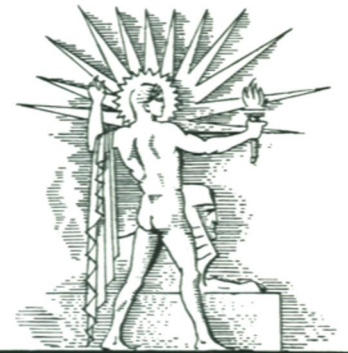
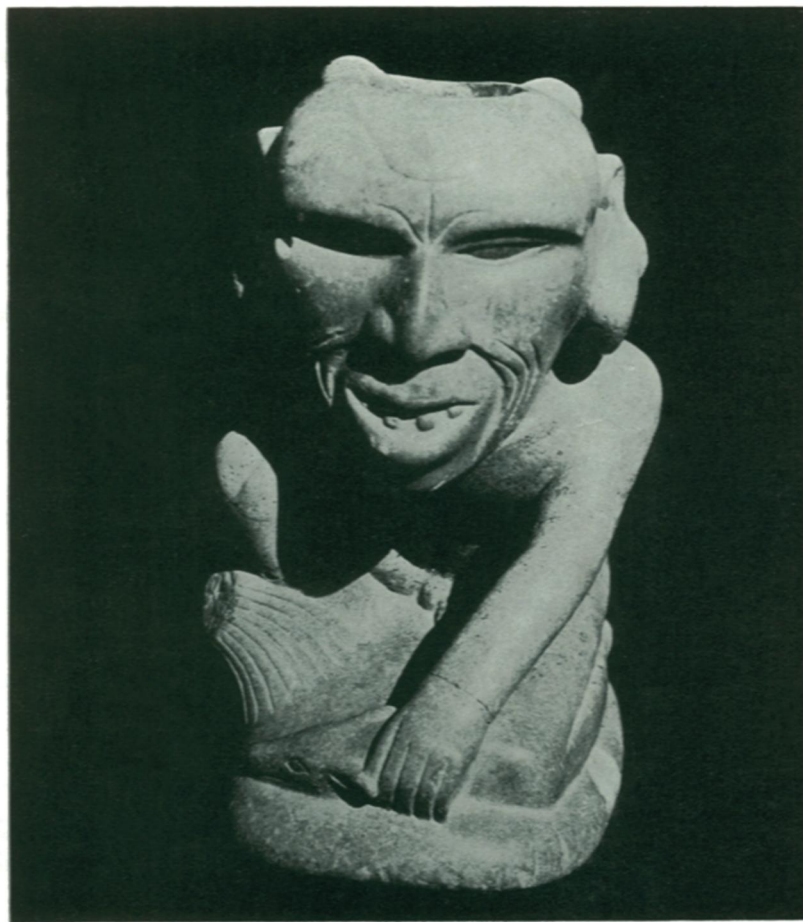


PRICE
15¢

SCIENCE NEWS LETTER

THE WEEKLY SUMMARY OF CURRENT SCIENCE •



October 15, 1938

Portrait Pipe

See Page 243

A S C I E N C E S E R V I C E P U B L I C A T I O N

Do You Know?

In buying a kitchen tool, test not only sharpness but also the weight of the tool and ease in holding it.

When Philadelphia held its centennial exhibition in 1876, bananas were so novel they were sold in tinfoil, at ten cents apiece.

The automobile dollar is a silver coin circulating in the Chinese interior; it is decorated with the picture of a sedan of American design.

A village of 1500 B. C., when native Britons were shifting from the Stone Age to bronze tools, has been unearthed in the Orkney Islands.

Keepers in Japanese zoos are being trained to recapture wild animals quickly by lasso and net—just in case an air raid should release wild beasts.

A 26-square-mile lake was created in southern California when floods caused the Mojave River to overflow last spring, and the lake may last two years.

Puerto Rico has a new Columbus Park, on the northwest coast of the island where Columbus is believed to have stopped for water supplies in 1493.

Describing the Chinese paint brush as an amazingly pliant tool, an Oriental art specialist says that the Chinese brush can produce a far greater variety of strokes than the ordinary Western paint brush.

QUESTIONS DISCUSSED IN THIS ISSUE

Most articles which appear in SCIENCE NEWS LETTER are based on communications to Science Service, or on papers before meetings. Where published sources are used they are referred to in the article.

AERONAUTICS

What will happen to the Treasure Island site after the World's Fair? p. 244.

ARCHAEOLOGY

What indicates to scientists that ancient Oklahoma Indians had communication with the South? p. 243.

ENGINEERING

What type of training provides the greatest number of captains of industry? p. 246.

EUGENICS

What do eugenicists want us to do to improve the human race? p. 247.

FORESTRY

How serious is New England's forestry problem? p. 252.

GENERAL SCIENCE

What international body is planning an inquiry into the social effects of science? p. 248.

MEDICINE

What institution will issue efficiency ratings for cancer treatments? p. 248.

What new usefulness has been found for sulfanilamide? p. 246.

Where has horse sleeping sickness attacked human beings? p. 247.

OCEANOGRAPHY

How did a medicine dropper aid in demonstrating the reality of the ocean's undertow? p. 248.

PHARMACY

Who discovered the liver cure for pernicious anemia? p. 245.

PHYSIOLOGY

What effect would insulin have on drunkenness? p. 249.

What organ can imitate the pituitary's sex-stimulating hormone? p. 248.

PSYCHIATRY

How has the psychiatrist put fits to use? p. 254.

PSYCHOLOGY

How is the intelligence of dogs tested? p. 245.

How young can a baby begin to learn? p. 248.

What effect does marriage have on romantic love? p. 253.

PUBLIC HEALTH

What are the requirements for keeping a house warm? p. 249.

What are the symptoms of tick paralysis? p. 249.

SOCIOLOGY

How does the life of large cities contribute to the rise of dictators? p. 250.

London had a red and green traffic signal as far back as 1868.

Woolen uniforms in Germany are required to contain a certain amount of woodpulp fiber.

Government scientists report that precooling California oranges before they are shipped East will save consumers and producers about a million dollars a year.

Hebrew is one of the official languages of Palestine.

A four-person bed for the sick is among the historic exhibits in the French hospital museum at Lyons.

Eating grasshoppers killed by arsenic poison is not likely to kill livestock, judging by experiments: a horse or cow would have to eat over a million poisoned hoppers to get a fatal dose.

SCIENCE NEWS LETTER

Vol. 34 OCTOBER 15, 1938 No. 16

The Weekly Summary of Current Science, published every Saturday by SCIENCE SERVICE, Inc., 2101 Constitution Avenue, Washington, D. C., Edited by WATSON DAVIS.

Subscriptions—\$5.00 a year; two years \$7.00; 15 cents a copy. Ten or more copies to same address, 5 cents a copy. Back numbers more than six months old, 25 cents.

Members of the American Association for the Advancement of Science have privilege of subscribing to SCIENCE NEWS LETTER at the reduced price of \$3 per year. Applications for this privilege should be accompanied by privilege card obtained from the Permanent Secretary, A.A.A.S., Smithsonian Institution Building, Washington, D. C.

In requesting change of address, please give your old address as well as the new one, at least two weeks before change is to become effective.

Copyright, 1938 by Science Service, Inc. Reproduction of any portion of SCIENCE NEWS LETTER is strictly prohibited. Newspapers, maga-

zines and other publications are invited to avail themselves of the numerous syndicate services issued by Science Service.

Cable address: Scienservc, Washington.

Entered as second class matter at the post-office at Washington, D. C., under the act of March 3, 1879. Established in mimeographed form March 18, 1922. Title registered as trademark, U. S. and Canadian Patent Offices. Indexed in Readers' Guide to Periodical Literature and in the Engineering Index.

Advertising rates on application. Member Audit Bureau of Circulation.

SCIENCE SERVICE is the Institution for the Popularization of Science organized 1921 as a non-profit corporation, with trustees nominated by the National Academy of Sciences, the National Research Council, the American Association for the Advancement of Science, the E. W. Scripps Estate and the journalistic profession.

Board of Trustees—Honorary President: William E. Ritter, University of California, Representing the American Association for the Advancement of Science, J. McKeen Cattell, Editor, Science, Garrison, N. Y.; Henry B. Ward, University of Illinois, Urbana, Ill.; Edwin G. Conklin, President, American Philosophical Society, Philadelphia, Pa. Representing the National

Academy of Sciences, W. H. Howell, Vice-President and Chairman of Executive Committee, Johns Hopkins University, Baltimore, Md.; R. A. Millikan, Director, Norman Bridge Laboratory of Physics, California Institute of Technology, Pasadena, Calif.; Harlow Shapley, Director, Harvard College Observatory, Cambridge, Mass. Representing National Research Council, C. G. Abbott, Secretary, Smithsonian Institution, Washington, D. C.; Harrison E. Howe, Editor of Industrial and Engineering Chemistry, Washington, D. C.; Ross G. Harrison, Director, Osborn Zoological Laboratory, Yale University, New Haven, Conn. Representing Journalistic Profession, John H. Finley, Editor, New York Times; J. Edwin Murphy, Managing Editor, Baltimore Evening Sun, Baltimore, Md.; O. W. Riegel, Director, Lee School of Journalism, Washington and Lee University, Lexington, Va. Representing E. W. Scripps Estate, Harry L. Smithon, Treasurer, Cincinnati, Ohio; Warren S. Thompson, Miami University, Oxford, Ohio.

Staff—Director, Watson Davis; Writers, Frank Thone, Emily C. Davis, Jane Stafford, Marjorie Van de Water, Robert Potter, Leonard H. Engel; Correspondents in principal cities and centers of research. Photography: Fremont Davis; Librarian: Minna Gill; Sales and Advertising: Hallie Jenkins, Austin Winant, Howard Bandy.