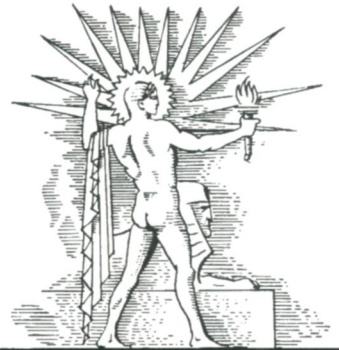
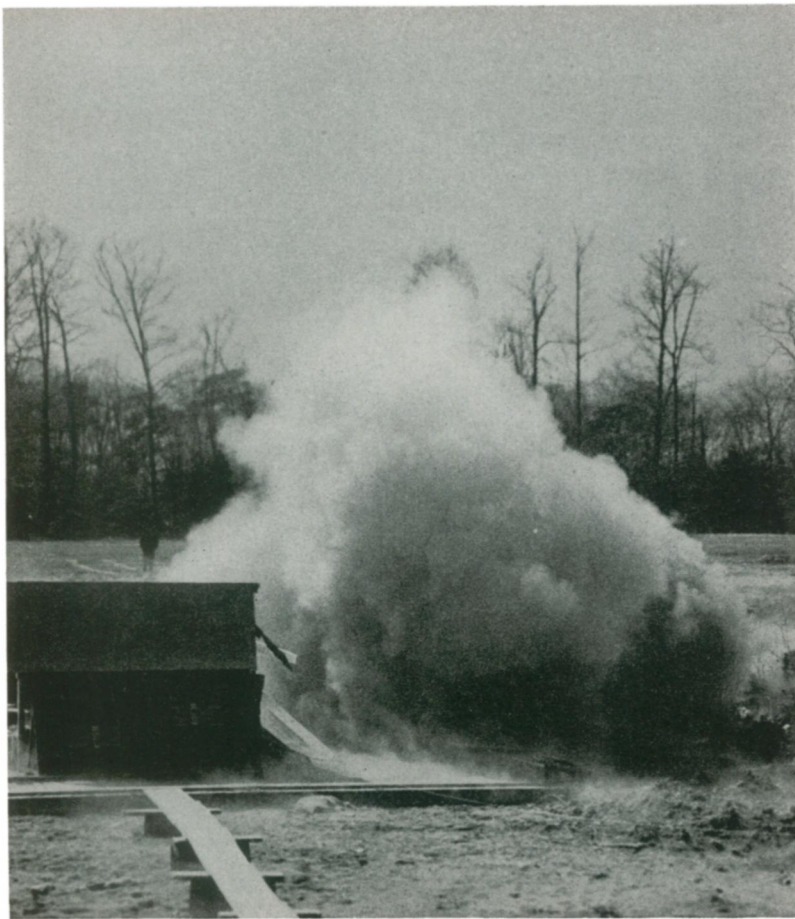


PRICE  
15¢

# SCIENCE NEWS LETTER

THE WEEKLY SUMMARY OF CURRENT SCIENCE ●



April 6, 1940

**Demonstration**

See Page 214

A S C I E N C E S E R V I C E P U B L I C A T I O N

## Do You Know?

The *Beardmore Glacier* in the Antarctic, believed the world's largest glacier, is about 100 miles long and 15 miles wide.

The normal eye's *blind spots* are points in the retina of the eye where the optic nerve leaves the eyeball and leads toward the brain.

Ultraviolet irradiation of *dough* during mixing improves the color and fermentation of baked bread, British experiments indicate.

Flat white *paint* reflects back 75% to 85% of the light thrown on it; a light blue reflects 40% to 55%; and dark brown 10% or less.

Roughening concrete *road surface* by applying hydrochloric acid, to reduce skidding risks, has been tried experimentally in England.

Using airplanes, the National Park Service in Alaska can *patrol* territory in three and one-half hours which would require four weeks' work by dog-sled.

The Berkeley, Calif., police department employs 12 *Doberman Pinscher* dogs, especially valuable because they can be trained to face gun fire and to disarm the person using the firearm.

The *Elgin marbles*, sculptures from the Greek Parthenon which were bought by the British government in 1816, have recently been cleaned, thereby arousing controversy over best way of handling such precious art relics.

## QUESTIONS DISCUSSED IN THIS ISSUE

Most articles which appear in SCIENCE NEWS LETTER are based on communications to Science Service, or on papers before meetings. Where published sources are used they are referred to in the article.

### AGRICULTURE

How much does the European corn borer cost the Northeast? p. 217.

### ANATOMY

How does football get in the blood? p. 221.

### ANTHROPOLOGY

Who has found evidence authenticating the story of the African "Baboon Boy"? p. 212.

### ARCHAEOLOGY

Where have archaeologists unearthed five great stone heads? p. 221.

### CHEMISTRY

What sort of clothespins are made in pastel shades? p. 216.

### DENTISTRY

How can a person chew himself deaf? p. 223.

### ENTOMOLOGY

What sort of fly eats the spider? p. 216.

### GENERAL SCIENCE

For what purpose are men of all the Americas planning to meet at Washington? p. 213.

### MEDICINE

How many chemicals will be provided for use in the search for an infantile paralysis cure? p. 217.

Lack of what vitamin may cause heart disease? p. 215.

What disease is likely to result from prolonged heavy drinking? p. 213.

What evidence has been found of a heredity influence on high blood pressure? p. 216.

### METALLURGY

What metal alloy is as silent as rubber? p. 212.

### MILITARY SCIENCE

What are the advantages and disadvantages of liquid oxygen with carbon as an explosive? p. 214.

### PHYSICS

How do scientists plan to double the present record for high pressures? p. 211.

### PHYSIOLOGY—AERONAUTICS

Why should an airplane pilot lie down? p. 216.

### PSYCHOLOGY

Why have psychologists developed a test of auditory phantasy? p. 216.

### SEISMOLOGY—MILITARY SCIENCE

How do earthquake instruments betray the location of big guns? p. 218.

Effects of *air conditioning* on human beings in the tropics will be tested in Singapore.

Some of Germany's airplanes used in long-distance flights are equipped with *Diesel* engines.

*Channel Islands* off California are peaks of mountain masses that long ago were submerged.

The South *Magnetic Pole* has shifted westward since 1909, the Byrd Antarctic Expedition has tentatively reported.

A *deer* fights with its feet, not its antlers.

*Skim-milk*, sufficiently chilled, may be whipped stiff—but it does not remain stiff very long.

Generally speaking, *Old Testament* books were written first in Hebrew, and the *New Testament* books in Greek.

The *orchard oriole*, when nest-building, chooses grasses that are nearly the same length, thereby making the nest pliable and strong.

## SCIENCE NEWS LETTER

Vol. 37 APRIL 6, 1940 No. 14

The Weekly Summary of Current Science, published every Saturday by SCIENCE SERVICE, Inc., 2101 Constitution Avenue, Washington, D. C. Edited by WATSON DAVIS.

Subscriptions—\$5.00 a year; two years \$7.00; 15 cents a copy. Ten or more copies to same address, 5 cents a copy. Back numbers more than six months old, 25 cents.

In requesting change of address, please give your old address as well as the new one, at least two weeks before change is to become effective.

Copyright, 1940, by Science Service, Inc. Reproduction of any portion of SCIENCE NEWS LETTER is strictly prohibited. Newspapers, magazines and other publications are invited to avail themselves of the numerous syndicate services issued by Science Service.

Cable address: Scienservc, Washington.

Entered as second class matter at the post-

office at Washington, D. C., under the Act of March 3, 1879. Established in mimeographed form March 18, 1922. Title registered as trademark, U. S. and Canadian Patent Offices. Indexed in Readers' Guide to Periodical Literature, Abridged Guide, and in the Engineering Index.

Members of the American Association for the Advancement of Science have privilege of subscribing to SCIENCE NEWS LETTER at \$3 a year.

The New York Museum of Science and Industry has elected SCIENCE NEWS LETTER as its official publication to be received by its members.

Advertising rates on application. Member Audit Bureau of Circulation.

SCIENCE SERVICE is the Institution for the Popularization of Science organized 1921 as a non-profit corporation, with trustees nominated by the National Academy of Sciences, the National Research Council, the American Association for the Advancement of Science, the E. W. Scripps Estate and Journalistic profession.

Board of Trustees—*Honorary President*: William E. Ritter, University of California. Representing the American Association for the Ad-

vancement of Science; J. McKeen Cattell, Editor, Science; Henry B. Ward, University of Illinois; Edwin G. Conklin, *President*, American Philosophical Society. Representing the National Academy of Sciences: W. H. Howell, *Vice-President and Chairman of Executive Committee*, Johns Hopkins University; R. A. Millikan, California Institute of Technology; Harlow Shapley, Harvard College Observatory. Representing National Research Council: C. G. Abbot, *Secretary*, Smithsonian Institution; Harrison E. Howe, *Editor*, Industrial and Engineering Chemistry; Ross G. Harrison, Yale University. Representing Journalistic Profession: Neil H. Swanson, Baltimore Evening Sun; O. W. Riegel, Washington and Lee School of Journalism. Representing E. W. Scripps Estate; Harry L. Smithton, *Treasurer*, Cincinnati, Ohio; Warren S. Thompson, Miami University, Oxford, Ohio; Karl Bickel, E. W. Scripps Co.

Staff—*Director*, Watson Davis; *Writers*, Frank Thone, Emily C. Davis, Jane Stafford, Marjorie Van de Water, Robert Potter; *Correspondents* in principal cities and centers of research. *Photography*: Fremont Davis; *Librarian*: Minna Gill; *Sales and Advertising*: Hallie Jenkins, Austin Winant, Howard Bandy.