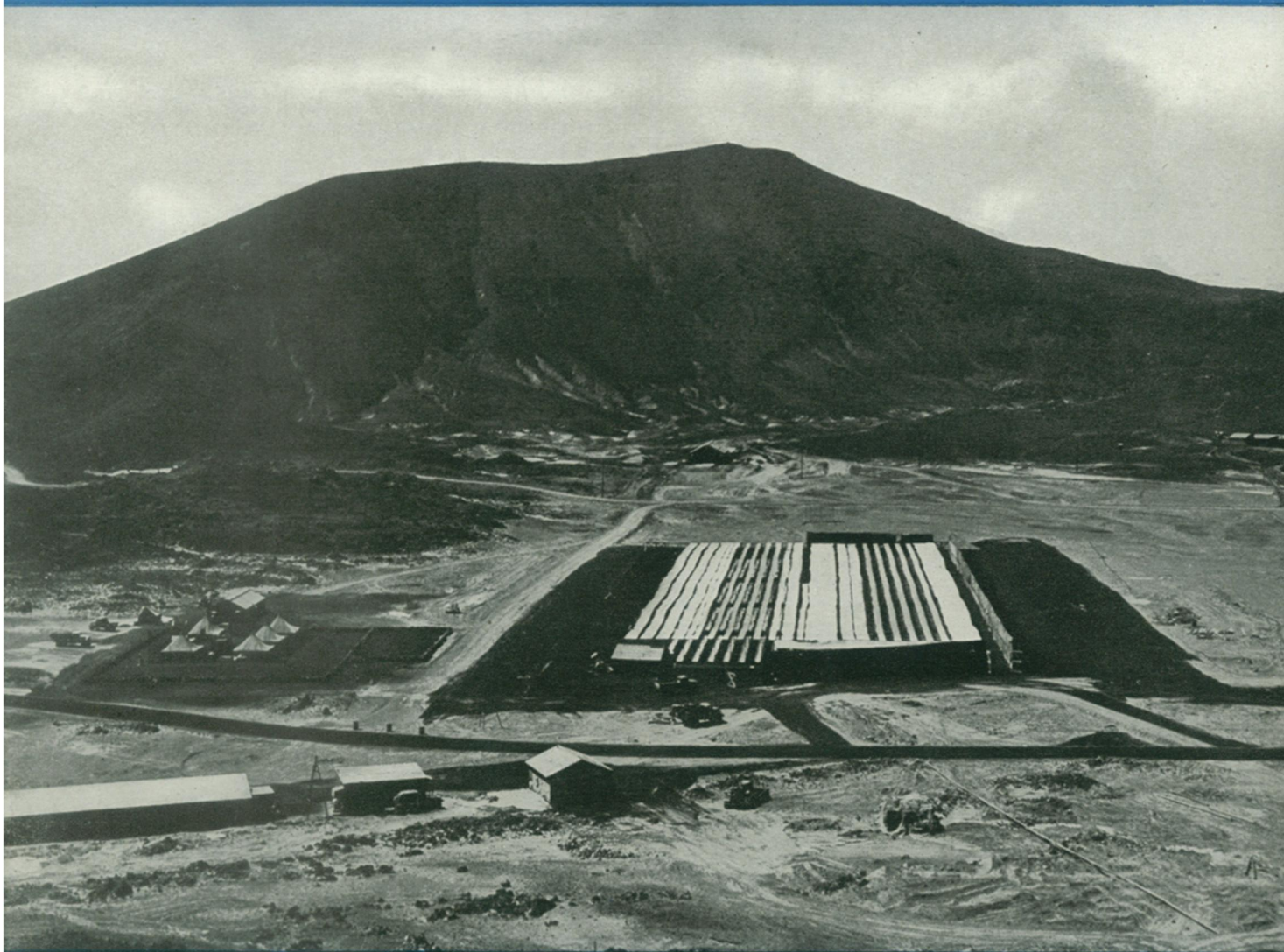


15¢

SCIENCE NEWS LETTER

THE WEEKLY SUMMARY OF CURRENT SCIENCE • JUNE 16, 1945

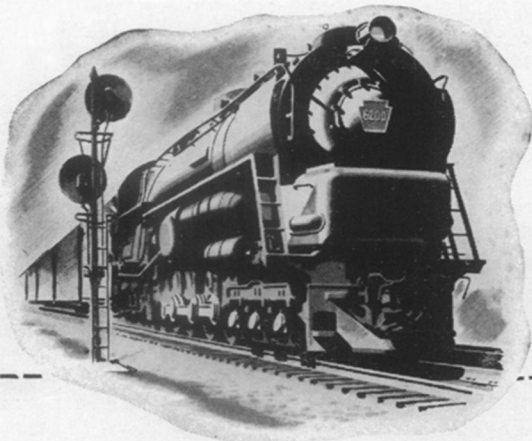
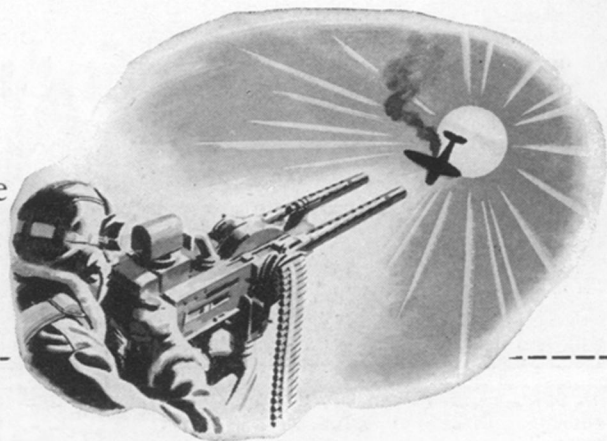


Garden on a Rock
See Page 378

A SCIENCE SERVICE PUBLICATION

In a bomber a GUNNER uses a new gun-sight lamp that permits him to aim *directly into the sun* — blasting enemy planes that otherwise would be invulnerable because of the blinding glare.

... the name on the GUNSIGHT LAMP is Westinghouse.

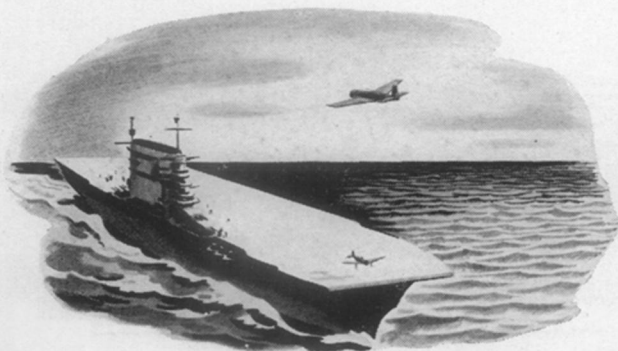
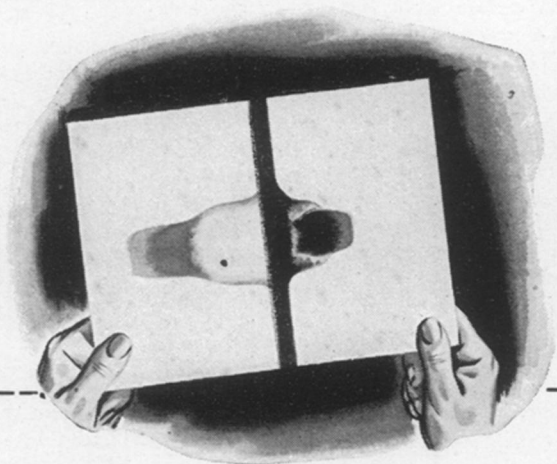


On a railroad an ENGINEER gets smoother operation — and 25% more power — from his steam locomotive because of a revolutionary new steam turbine drive.

... the name on the TURBINE DRIVE is Westinghouse.

In an Army arsenal a BALLISTICS EXPERT photographs projectiles, smashing through armor plate, with an x-ray tube that takes a picture in *1/1,000,000th of a second*.

... the name on the X-RAY TUBE is Westinghouse.



On a carrier a PLANE DIRECTOR uses a new kind of elevator to hoist planes on deck faster — keeping the deck cleared and getting fighters into the air quicker.

... the name on the ELEVATOR is Westinghouse.

Westinghouse
PLANTS IN 25 CITIES OFFICES EVERYWHERE

Tune in: JOHN CHARLES THOMAS—Sun. 2:30 pm, EWT, NBC

TODAY — Westinghouse skill in research and engineering is constantly at work, developing new and better war materials for final Victory.

TOMORROW — This same research and engineering skill will mean more dependable, more efficient industrial equipment and appliances for the home.

