

•New Machines And Gadgets•

☼ **AUTO** bottle warmer, plugged into dashboard socket, heats baby's formula in about eight minutes, without interrupting trip. The heating unit, sealed in pyrex glass tube and topped with surgical rubber cap, is sterilized beforehand. Five ice cubes placed in an insulated container keep formula cool until feeding time.

Science News Letter, October 12, 1946

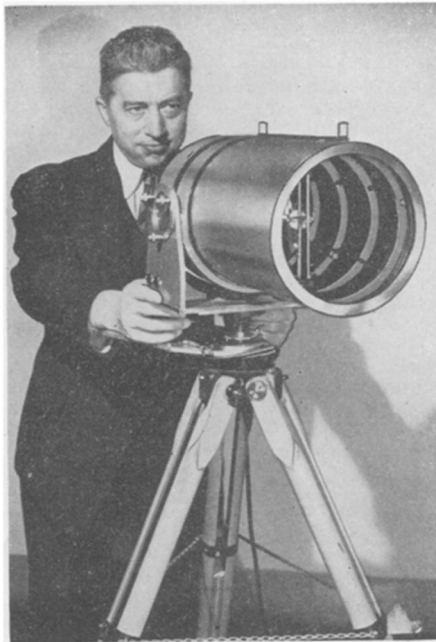
☼ **MIDGET** storage batteries of four cells, each about the size of a candy bar, supply power to radio transmitters carried to high altitudes with sensitive weather instruments by hydrogen-filled balloons. The transmitters send continuous reports to the earth. The lead-acid batteries come dry; the acid enters the cell through a puncture made just before it is needed.

Science News Letter, October 12, 1946

☼ **CELLOPHANE FILM** of unusual thinness, developed in Holland, is responsible for a new method of photochemical photography. In making, cellophane film is immersed in a solution of diazonium and mercury salts. Developing and printing can be done in sodium light because the sensitiveness to light of diazonium is limited to violet and ultraviolet rays.

Science News Letter, October 12, 1946

☼ **HEAT DETECTOR**, sensitive to the heat in a man's body in the darkness a quarter of a mile away, collects the invisible heat waves by a parabolic reflector, within the instrument shown in the picture. It focuses them on a thermal resistor which changes the electrical cur-



rent passing through it as the heat varies.

Science News Letter, October 12, 1946

☼ **GARDEN TOOL** plows, harrows and pulverizes the soil in one operation. The power-driven machine, guided by handlebars, has a rotating cylinder close to the ground which has many long, sharp, hooked teeth on its surface. These cut downward in front of the cylinder, dig to the proper depth and raise the pulverized soil to the rear.

Science News Letter, October 12, 1946

☼ **METAL CANS** for fruit and vegetable preservation are made with slightly tapering sides so that they can be "nest-

ed" in shipping and storage, occupying much less space and preventing dents. When filled and sealed, they require no extra space in shipping cases if alternate cans are placed bottoms up.

Science News Letter, October 12, 1946

☼ **TREE PROTECTOR**, which prevents insect and other damage to fruit, is a pair of frames, raised on each side of the tree, that lock together at the top. Their spreading legs, surrounding the tree, support a fabric covering that is pulled in sections to the top by means of attached pulleys and cords.

Science News Letter, October 12, 1946

If you want more information on the new things described here, send a three-cent stamp to SCIENCE NEWS LETTER, 1719 N St., N. W., Washington 6, D. C., and ask for Gadget Bulletin 332. To receive this Gadget Bulletin without special request each week, remit \$1.50 for one year's subscription.

BOOKS

SCIENCE NEWS LETTER will gladly obtain any American book or magazine in print for subscribers.

Send check or money order to cover regular retail price. If price is unknown, send \$5 and change will be returned. We will pay postage in the United States.

When publications are free, send 10c for handling.

Book Department

SCIENCE NEWS LETTER
1719 N Street, N.W.
Washington 6, D. C.

Question Box

AGRICULTURE

How does D-D save crops? p. 234.

ART

What new device helps convalescents learn to draw? p. 231.

BOTANY

What plants disperse their seeds by parachuting? p. 229.

CHEMISTRY

For what did the Germans use sugar during the war? p. 232.

MEDICINE

What is the new theory of cancer growth? p. 227.

What type of cancer is most common? p. 227.

NUTRITION

How do grains help the meat shortage? p. 239.

OCEANOGRAPHY

What may be a cause of baby earthquakes? p. 233.

Where published sources are used they are cited.

The imprint to the right is mailing address for your Science News Letter.

Date on lower line is expiration of your subscription.

Renew early to avoid lapse in service.

In requesting change of address please give your old address as well as the new one, at least two weeks before change is to become effective.