

15¢



SCIENCE NEWS LETTER



Vol. 51, No. 23

THE WEEKLY SUMMARY OF CURRENT SCIENCE • JUNE 7, 1947



Going to the Races

See Page 358

A SCIENCE SERVICE PUBLICATION



RCA Miniature Tubes enhance the tonal brilliance of RCA Victor Globe Trotter portable radios.

She shall have music wherever she goes!

Wherever you go with an RCA Victor Globe Trotter portable radio you'll enjoy richness and clarity of tone—volume enough for outdoor dancing—made possible through tiny tubes.

Miniature tubes save valuable space in small radios—space that can be used for larger and better loudspeakers and for longer lasting, radio-engineered RCA batteries.

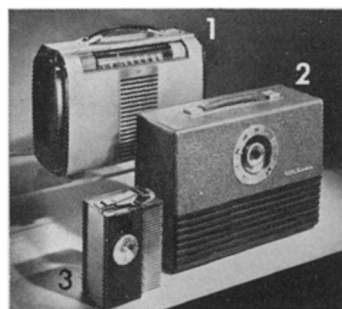
These miniature tubes were developed by RCA Laboratories—a world center of radio and electronic research—and long a leader in development of electron tubes for all purposes.

At RCA Laboratories, the same research, experimentation and advancement that resulted in these improved tubes, keep all RCA products and services at the top in their particular fields.

When you buy a product bearing the name RCA or RCA Victor—a radio set, television receiver, Victrola radio-phonograph, a radio tube or phonograph record—you get one of the finest products of its kind that science has yet achieved.

"Victrola" T. M. Reg. U. S. Pat. Off.

Radio Corporation of America, RCA Building, Radio City, New York 20. Listen to the RCA Victor Show, Sundays, 2:00 P.M., Eastern Daylight Saving Time, over NBC.



Ideal traveling companions. (1) RCA Victor "Globe Trotter" portable radio—operates on AC, DC, or batteries. (2) RCA Victor "Escort"—has a battery you can recharge from any ordinary AC electric outlet. (3) RCA Victor "Solitaire"—less than 6¼ inches tall!



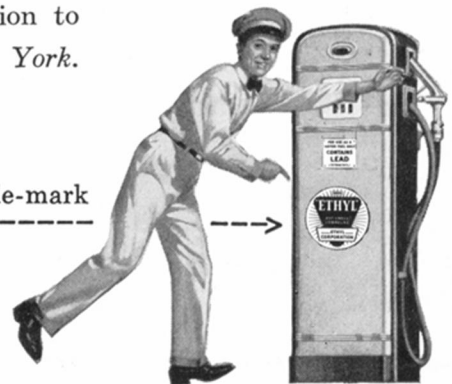
RADIO CORPORATION of AMERICA



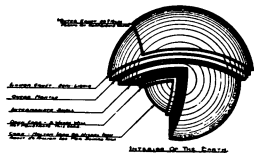
if gasoline were sold in crates...

you would expect to see labels giving specifications, information about quality, and ingredients pasted right on the crates. However, since you take gasoline home in your own gas tank, there's no way to actually label each gallon you buy. That's why oil companies put "Ethyl" trade-marks on their pumps. The familiar yellow-and-black emblem means that they have improved their best gasoline with "Ethyl" antiknock compound—the famous ingredient made by the Ethyl Corporation to step up power and performance. *Ethyl Corporation, New York.*

look for the **ETHYL** trade-mark



Flying boats will soon be bringing daily workers into New York City from nearby Connecticut residential areas; they will land on the East River, which is near downtown business centers.



Atoms, Planets & Stars

A DRAWING TO SCALE
(SIZE 23" x 48")

Dr. Albert Einstein Wrote as follows:

"I was extremely pleased to receive your beautiful drawing which gives a vivid representation of our solar system. I have hung it on the wall of my room to look often at it. Sincerely yours,"

A. EINSTEIN

"The drawing is excellent and informative. You certainly have given an enormous amount of information in a limited space."—**DR. FOREST RAY MOULTON.**

"I have never before seen the various features of the solar system and the earth shown so skillfully."—**DR. M. M. LEIGHTON, Univ. of Illinois.**

A Graphic Representation Covering the Following:

- 1—The solar system to scale and the movements of the planets, etc.
- 2—A "Time Table" for rocket ships showing arrival time from the planet Earth.
- 3—The Elements, giving the melting and boiling points, density and atomic weights.
- 4—Comparative size of the sun to the orbit of the moon around the earth.
- 5—Comparative size of the star Betelgeuse to the orbits of the planets.
- 6—Sectional view thru the earth showing the pressure at earth's core, etc.
- 7—Twenty of the brightest stars and their distances.
- 8—Our solar system in a nut shell. Shows our relative distance to other stars.
- 9—Our location in the Milky Way Galaxy, and time to reach nearest star.
- 10—Curvature of the earth with comparative heights and depths.
- 11—A drawing showing the way of measuring the distances to near stars.
- 12—Showing movement of comet tails, and their paths thru outer space.
- 13—The Moon. Temperatures, distance, diameter and other information.

Printed on 70 lb. White Regular Finish Offset Paper

ORDER BY MAIL—\$2.50

JAMES OLIVER HOGG, JR.
160 N. LaSalle St.
Chicago 1, Illinois

(Please Mention SCIENCE NEWS LETTER)

Harriman's **NEW** Dictionary of PSYCHOLOGY

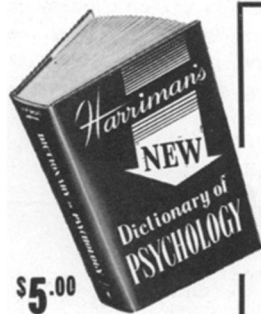
**THE FIRST COMPLETELY NEW WORK
OF ITS KIND IN TWENTY YEARS!**

PSYCHOLOGY is a rapidly expanding field of knowledge. Its vocabulary is constantly growing. New concepts require a clearly defined terminology, based upon up-to-date research and literature.

In this **NEW DICTIONARY OF PSYCHOLOGY**, Dr. Harriman (Professor Philip Lawrence Harriman, of Bucknell University, editor-in-chief of the *Encyclopedia of Psychology* and *Twentieth Century Psychology*) spared no effort to include all terms germane to contemporary psychology, and also, where necessary, to clarify terms used in a variety of connotations.

The important standard reference books, as well as other significant contemporary literature in the field of psychology and cognate sciences, were carefully examined, to make sure that the interpretations given are thoroughly up-to-date.

The scholar in his research, the teacher, the librarian and the practicing psychologist in their respective tasks, and the student in his work should find this **NEW DICTIONARY OF PSYCHOLOGY** a most useful, quick and ready book of reference.



This is not a reprint of obsolete material, but newly prepared definitions and explanations

Contains thousands of entries covering all basic terms and concepts in psychology, psychoanalysis, psychiatry and allied subjects. Whenever possible the name of the person who first introduced the term, together with other important data, has been given. Also, includes biographical sketches of leading psychologists.

ORDER YOUR COPY NOW AND SAVE 20%

SPECIAL ORDER COUPON

PHILOSOPHICAL LIBRARY, Publishers
15 East 40th St., Dept. 35, New York 16, N. Y.

Enclosed is \$_____ for _____ copy(ies) of Harriman's New **DICTIONARY OF PSYCHOLOGY**, at the special Pre-Publication price of \$4.00 per copy. The book(s) to be mailed to me immediately upon publication.

NAME _____

ADDRESS _____

Publication date is June 25. If you send in your order before June 25, you can get your copy for only \$4.00.