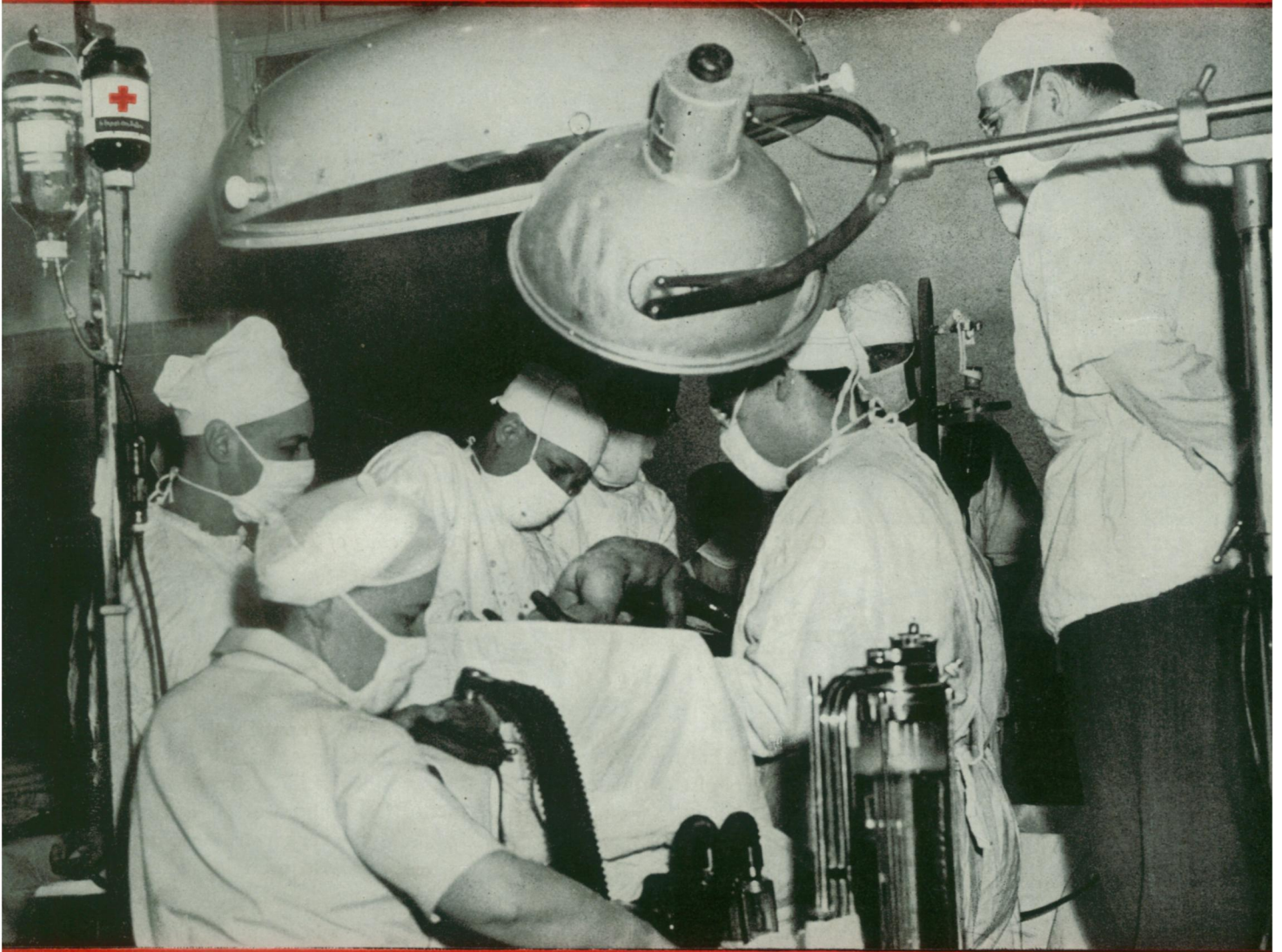


15¢

JULY 3, 1948

SCIENCE NEWS LETTER

THE WEEKLY SUMMARY OF CURRENT SCIENCE



Blood Saves Mother

See Page 10

A SCIENCE SERVICE PUBLICATION

\$5.50 A YEAR

VOL. 54 NO. 1.



Great drama comes to television in NBC telecasts of Theatre Guild presentations.

How wide is "Broadway"?

To all the world "Broadway" means the theatre. So when NBC, in October, 1947, introduced regular telecasts of Theatre Guild productions, an expansion of "Broadway" began—and some day it will be nation-wide.

Today, if you live in a television area almost anywhere from Boston to Richmond, the new "Broadway" of television runs past your door. Now you can see great plays, pro-

fessionally performed by noted actors. That's news, exciting news, to lovers of the theatre.

Celebrated artists run through lines and action before keen-eyed RCA Image Orthicon television cameras. At *your* end of the picture, on an RCA Victor home television receiver, action is sharp, clear, detailed . . . and voices flawless.

That television can make so im-

portant a contribution to American entertainment is in good part the result of pioneering and research at RCA Laboratories. Such research enters every instrument bearing the name RCA or RCA Victor.

When in Radio City, New York, be sure to see the radio, television and electronic wonders at RCA Exhibition Hall, 36 West 49th Street. Free admission. Radio Corporation of America, RCA Building, Radio City, N. Y. 20.



RADIO CORPORATION of AMERICA