

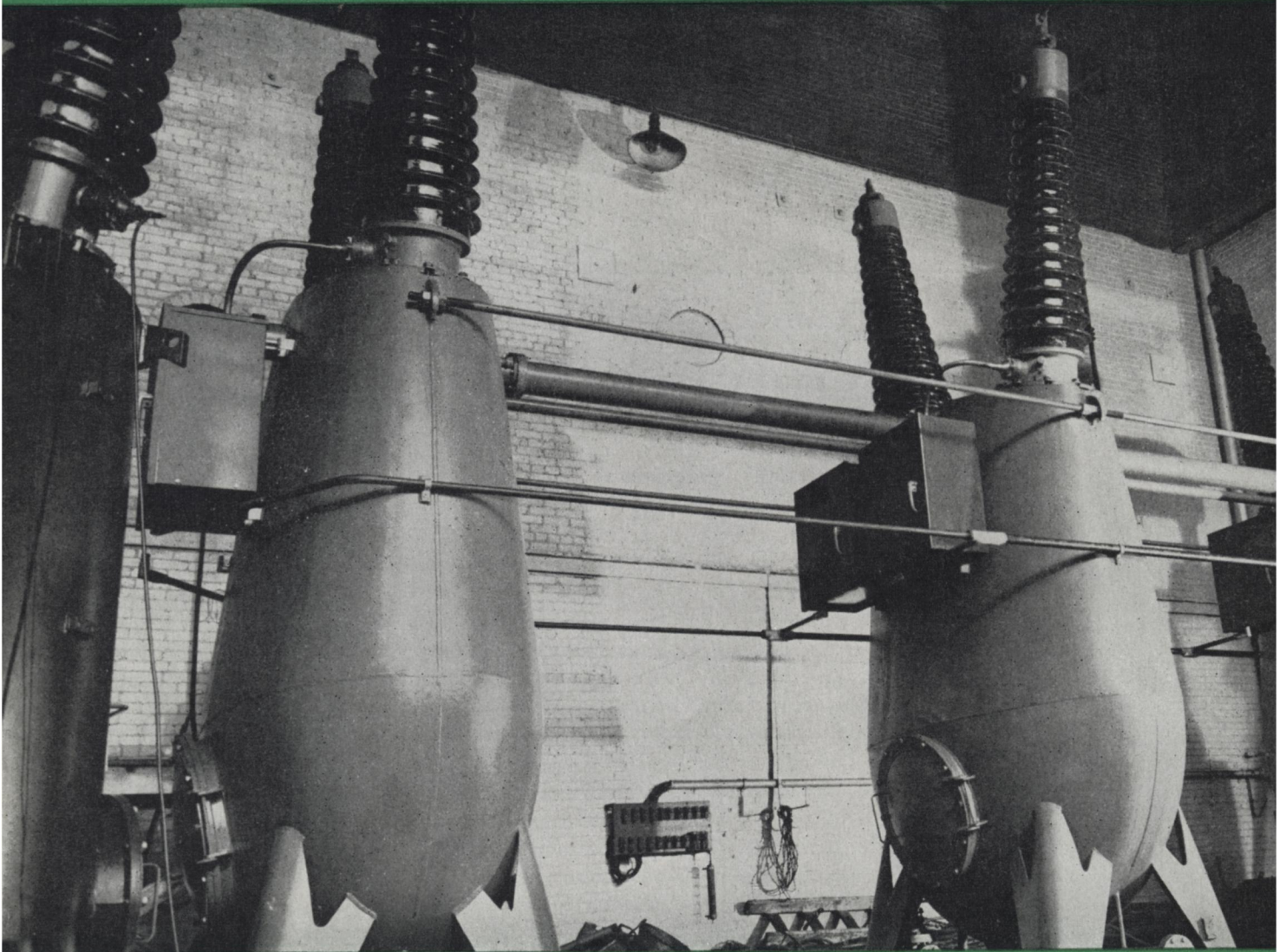
15¢

April 14, 1951

# SCIENCE NEWS LETTER

®

THE WEEKLY SUMMARY OF CURRENT SCIENCE



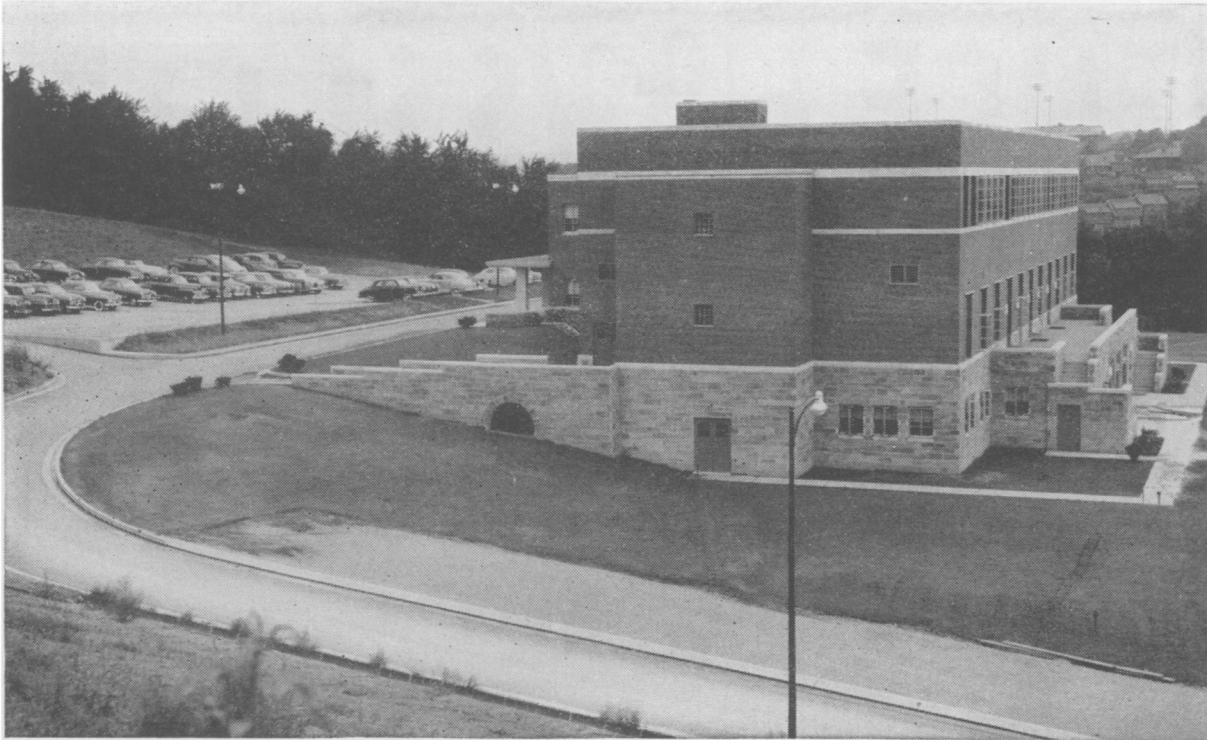
## Oil-Filled Circuit Breakers

See Page 238

A SCIENCE SERVICE PUBLICATION

\$5.50 A YEAR

VOL. 59 NO. 15 PAGES 225-240



## In Recognition of a Job Well Done

Westinghouse fully recognizes the excellent foundation being provided engineering students in many colleges and universities throughout the land.

But to speed young engineering graduates in the inevitable transition from theory to practice, Westinghouse has dedicated a new building . . . the Westinghouse Educational Center.

Primary purpose of this center is to offer the best facilities possible for the training and continued education of new employees . . . top students from leading engineering schools. This modern center includes such facilities as an auditorium; classrooms acoustically treated and with modern visual aid equipment; library and magazine room; formal and informal lounges; game, billiard and hobby rooms; facilities for athletic activities, and a convenient cafeteria.

This is but one way in which Westinghouse encourages scientific advancement, in addition to supporting 42 fellowships, 149 scholarships, 5 professorships, and a graduate study program through which advanced degrees may be obtained from leading universities by Westinghouse employees. Another important phase of the Westinghouse program is summer research work by selected graduate students, and an industrial experience program for faculty members of engineering schools.

In these ways, Westinghouse co-operates with colleges in a common effort to advance scientific achievement in all of its aspects. Westinghouse Electric Corporation, Pittsburgh 30, Pennsylvania.

G-10136

**YOU CAN BE SURE..IF IT'S Westinghouse**