

15¢

\$5.50 A YEAR

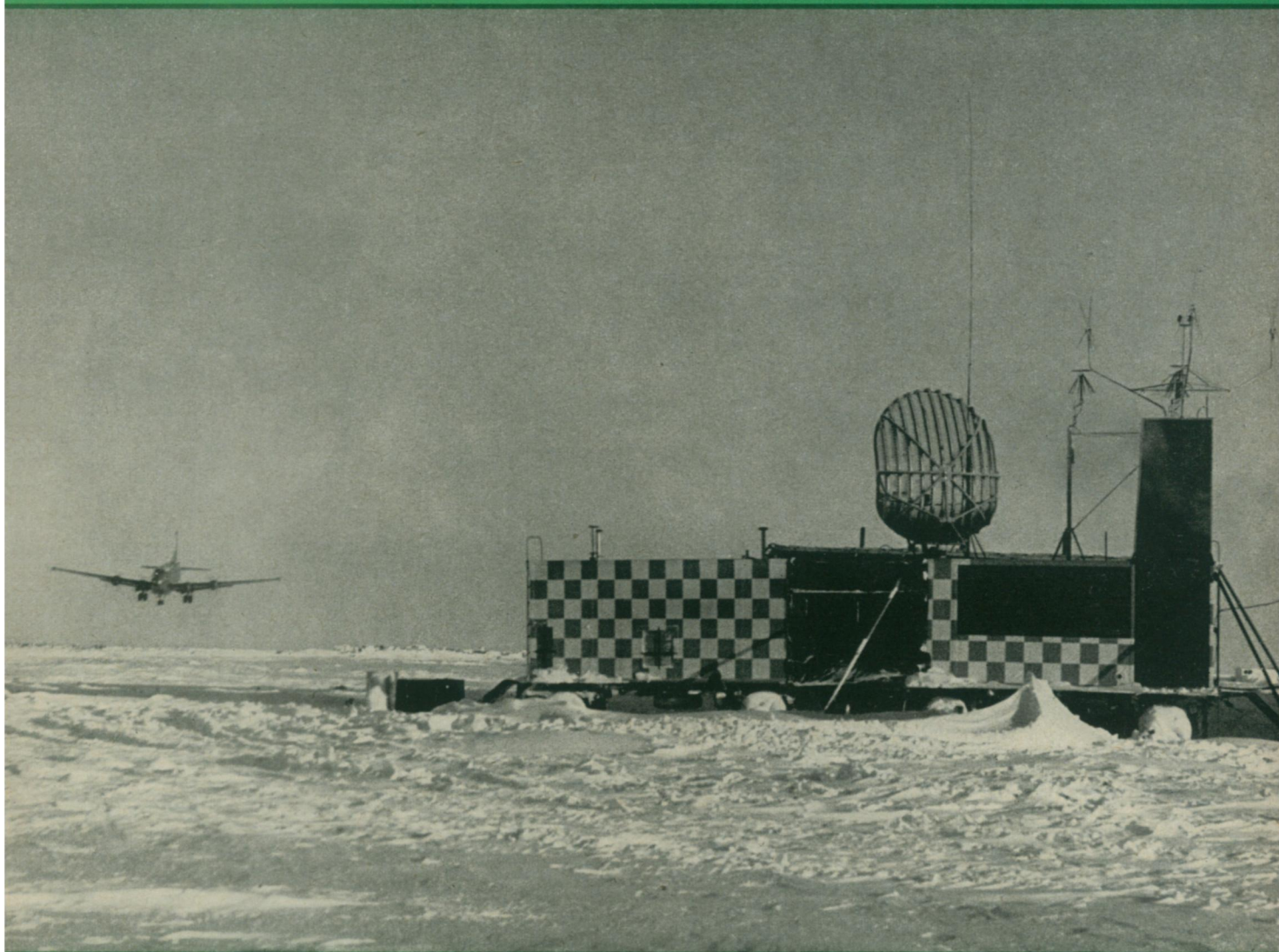
June 18, 1955

VOL. 67, NO. 25 PAGES 385-400

SCIENCE NEWS LETTER

®

THE WEEKLY SUMMARY OF CURRENT SCIENCE



Airlift to DEW Line

See Page 395

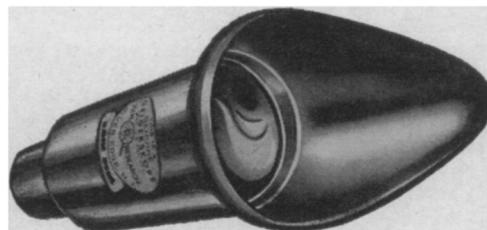
A SCIENCE SERVICE PUBLICATION

KEN KITS for everyone interested in Uranium and Atomic Energy

EACH KIT IS UNCONDITIONALLY GUARANTEED OR MONEY PROMPTLY REFUNDED

THE PROFESSIONAL MODEL GEIGERSCOPE

Optical uranium and radio-activity detector. Now in use in hundreds of laboratories, in industry, atomic energy plants and major universities. More sensitive for use on radioactive samples or mineral specimens than any portable electronic instrument, regardless of price. Sturdy, durable, portable as a pocket watch. Requires no power source because it converts the energy of alpha rays directly into visible signals; no background count. Detect and measure any alpha-active isotope down to the range of a millionth of a microcurie. Detects leakage from X-ray machines, contamination of air, surfaces, hands, apparatus, not revealed by conventional instruments. Measure radioactive fallout from distant nuclear explosions. Invaluable for anyone interested in radioactivity. Supplied complete with calibrated radium standard, uranium ore sample, direction sheet and air-tight holster.



\$5

KEN ULTRA VIOLET FLASHLIGHT

Our research staff has now developed a completely portable ultra violet light for the use of the uranium prospector. Compact, sturdy and rugged and operates on ordinary flashlight batteries. The powerful beam will cause fluorescent uranium minerals to glow at a distance of ten feet. Complete except for batteries so you can use fresh ones from your local store. Data sheet lists fluorescent minerals. JUST THE THING FOR THAT NEXT FIELD TRIP.

\$3



KEN BEAD TEST KIT

The sodium fluoride bead test is one of the most sensitive for detecting and confirming uranium minerals. It enables you to distinguish between uranium and thorium. The vial of pure sodium fluoride meets ACS specifications, enough for hundreds of tests. The bead holder is of PLATINUM wire, permanently sealed into a heat-insulating handle; forceps are provided. All attractively packed in a convenient case that you can slip into your pocket. Complete with direction sheet.

Only \$2



KEN RADIOACTIVE ORES SPECIMEN KIT

For comparison or display purposes. Four rich mine samples from different parts of the country are attractively packed in a pocket size clear plastic box. They contain all five of the commercially important radioactive ores. Complete with data sheet giving the identifying characteristics and mineralogical properties.

Only \$2

SHORT WAVE ULTRA VIOLET BULB

An inexpensive source of short wave ultra violet radiation. Excites fluorescence in tungsten ores, carbonates and other minerals which do not react to long wave UV. Complete with special socket, simple wiring diagram anyone can follow, direction and data sheet.

\$3

KEN CALIBRATED RADIUM STANDARD KIT

This kit contains five permanent standards for the testing and calibration of any counter, scintillator, ionization chamber, Geiger scope or any other radioactivity detector. They cover the range from 100 to 1,000,000 disintegrations per minute. Complete with accessories and data sheet giving the certified alpha, beta and gamma activities of each of the five standards.

\$5

ATOMIC PROSPECTOR'S HANDBOOK

Valuable data on radioactive ores, field, lab and mill methods, and map. Everything you need know about this vital new field! Send for Handbook today!

Only \$1

KEN RESEARCH INC.

831 FIFTH AVENUE, RIVER EDGE 2, N. J.

Gentlemen: I enclose \$ in (cash) (check) (money order). Rush the items I have checked below. Each item will be sent postpaid and with an unconditional money-back guarantee.

QUANTITY	ITEM
()	Professional Model Geigerscope @ \$5.
()	Ken Calibrated Radium Standard Kit @ \$5.
()	Ken Radioactive Ore Specimen Kit @ \$2.
()	Ken Atomic Prospector's Handbook @ \$1.
()	Ken Bead Test Kit @ \$2.
()	Short Wave Ultra Violet Bulb @ \$3.
()	Ken Ultra Violet Flashlight @ \$3.

Ship them immediately to:

Name

Address

City..... State.....



831 FIFTH AVENUE

RIVER EDGE 2, N. J.