

• New Ideas and Gadgets •

For sources of more information on new things described, send a self-addressed stamped envelope to SCIENCE NEWS LETTER, 1719 N St., N.W., Washington 6, D. C., and ask for Gadget Bulletin 1143. To receive this Gadget Bulletin without special request each week, remit \$1.50 for one year's subscription.

⚙️ **LIGHTWEIGHT WELDING MACHINE** for fusing, brazing and soldering produces a 6,000-degree Fahrenheit torch flame by electrically burning water. A 30-pound self-contained unit, it generates hydrogen and oxygen which are mixed and immediately conducted to the torch tip and burned. The flame can be adjusted down to .005 inch in diameter by using a variable voltage transformer.

• Science News Letter, 81:304 May 12, 1962

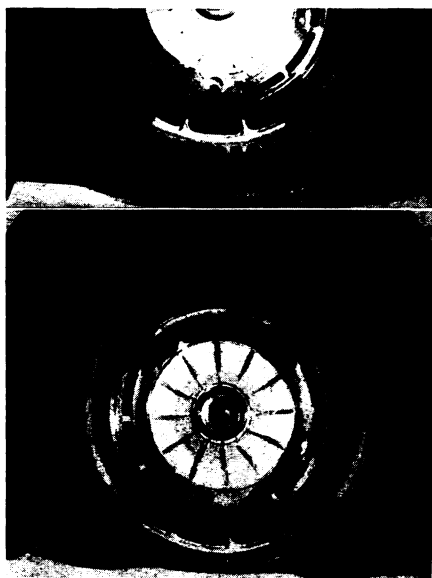
⚙️ **TAPERED TUBE FLOWMETER** for liquids and gases is a refinement of the classic tapered tube-ball type flowmeter with several new features. Its glass metering tube can be removed and replaced without tools. A needle valve for fine flow adjustment is provided in each flowmeter. Accessories are available on special order.

• Science News Letter, 81:304 May 12, 1962

⚙️ **STAINLESS STEEL CLAD ALUMINUM** is valuable in the cooking utensil and small appliance field, in addition to the automotive and aerospace industries. Formed with stainless steel bonded to aluminum, the material combines advantages of both metals.

• Science News Letter, 81:304 May 12, 1962

⚙️ **SAFETY WHEEL INSERT** placed within a tubeless tire provides protection against blowouts. Two cast aluminum inserts, each a half circle, are fitted around the wheel rim. Extending about three inches



into the air chamber of the tire and capped with rubber, the wheel inserts, shown in the photograph, support the car and provide traction when the tire fails, extending mobility many miles.

• Science News Letter, 81:304 May 12, 1962

⚙️ **ROCKET-SHAPED KITE** is designed upon space age principles of aerodynamics. Said to need less wind for flying than most kites, it can perform maneuvers such as

diving, looping-the-loop and soaring to great heights. Four feet long and fully assembled, the plastic kite comes ready to inflate and fly. Complete instructions are included.

• Science News Letter, 81:304 May 12, 1962

⚙️ **DUAL-PURPOSE GALVANOMETER** for classroom, laboratory or lecture hall can project its readings on a screen large enough for viewing by an entire class. Among other uses, it serves as a millivoltmeter, microammeter, and as an indicating instrument for photoelectric and piezoelectric experiments.

• Science News Letter, 81:304 May 12, 1962

⚙️ **MOTORIZED FISH LURE** is a battery-operated, propeller-driven lure for fresh- or salt-water fishing. Buzzing like a bumblebee as it cruises underwater for fish, the lure will navigate at any desired depth for four hours at a time. A rudder controls its direction. Available in three color combinations, the lure is 5½ inches long.

• Science News Letter, 81:304 May 12, 1962

⚙️ **TRANSPARENT CELESTIAL GLOBE** is a useful teaching instrument to demonstrate the basic relationship between the earth and the stars, planets and galaxies. A four-inch-diameter world globe is mounted within the 12-inch-diameter star globe, each rotating independently. The stars for any time and place can be quickly shown.

• Science News Letter, 81:304 May 12, 1962



Nature Ramblings



May-Apple

Photograph by FREMONT DAVIS • Text by WILLIAM E. SMALL

➤ IN MAY the open woods come alive with spreading patches of may-apples or mandrakes, nodding their brief but handsome white flower between a pair of foot-shaped leaves.

Springing from a common, rambling, poisonous root, their early spears spike dead leaves and carry them aloft, unfurl, and shade the single flower to follow.

From Quebec to Minnesota, south to Florida and west to Texas, the ill-smelling *Podophyllum peltatum* are found. Though may-apples have no nectar, they still attract early bumblebees that spread the pollen, fertilizing next year's crop.

The ovoid yellowish fruit appear late in June or July, sweet but acid, an edible treat for youths. Luscious marmalade and tasty drinks are easily prepared from this lemon-like berry.

This American herb has been used for generations in medicines and home remedies although most of the plant is poisonous. Strangely enough it is avoided by grazing livestock.

May-apple belongs to the small barberry family of 100 relatively unimportant plants. The only other may-apple species are found in eastern Asia, demonstrating the close relationship between North American and Asian plant life.

• Science News Letter, 81:304 May 12, 1962

