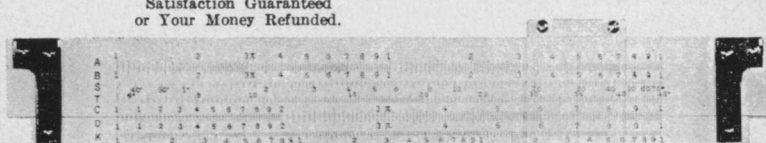


ENGINEER'S No. 5500 DUPLEX SLIDE RULES

Math problems a snap when you use the Engineer's No. 5500 Duplex Slide Rule. This Professional model is used by more than Ten Thousand High School and College students daily in their Science and Math courses. Equipped with 13 scales, has adjustable end brackets, accurate to three decimal places, overall length seven (7) inches, complete with cowhide leather case and 27 page Instruction manual. **Order Direct from this ad:** Send your name, address and your check or money order for \$5.45 for prompt delivery. **Special School Prices:** 6 for \$30.00 12 for \$54.00 25 for \$100.00 Free Illustrated Catalog Available for the asking.

Satisfaction Guaranteed or Your Money Refunded.



ENGINEER'S SLIDE RULES, BOX 638 JOANNA, S. C.

NICKEL-CADMIUM BATTERIES.....95¢ ea.

The Battery That's Used in Guided Missiles Now Released as Government Surplus

Ideal for photography, models, searchlights, anywhere a lightweight high capacity storage battery is needed. Sintered-plate, Nickel Cadmium, plastic-cased, alkaline storage batteries designed for "NIKE" Missile and now surplus. A lifetime battery with no known limit of service (over 5000 recharges on test without loss of capacity). Other features: Virtually indestructible, compact and lightweight, withstands heavy shock and vibration, flat voltage curve during discharge retains charge year or more, high discharge rate up to 50 amps for this cell. No corrosive fumes to harm clothing or equipment, spill-proof construction, discharges in any position, indefinite storage without deterioration, operates in temperatures -60°F to +200°F.

Each cell is approx. 4 ampere hour capacity. Nominal voltage per cell is 1.25 volts. (A 6-volt battery requires 5 cells). Cell size 6" H. x 2" W. x 1/2" T. Wt. 6 ozs. ea. Uses Potassium-Hydroxide (30% by weight) electrolyte. Add only distilled water periodically. A fraction of Government cost.

Used cells \$.95 ea.
Brand New cells 2.49 ea.


MOTOR STARTING CELLS

30 A.H. cells, Nickel-Cadmium, steel-cased, with 1/2" screw terminals for mom. current drains to 1000 amps. Size 8 1/2" H. x 3" W. x 1 3/16" T. Wt. approx. 3 1/4 lbs. Permanently sealed. No filling necessary.

Used cells \$2.95 ea.
New cells 5.95 ea.

All cells guaranteed to your satisfaction or money refunded (less postage).

ESSE RADIO COMPANY, Dept. SNL
42 W. South St., Indianapolis 25, Indiana, 46225



MEDICINE

Advanced Surgery at NIH

See Front Cover

► THE DAYS of kitchen-table operations under a kerosene lamp seem like the dark ages compared to the latest facilities for open-heart surgery in the newest building at the National Institutes of Health in Bethesda, Md.

Heart watching is made as simple as bird watching with binoculars (see picture below) provided for close-up inspection of the apparently bloodless patient on the operating table seen on this week's front cover.

Scoreboards like those at football and basketball games and recording equipment like that in radio and television studios give every detail of the operation to observers wearing earphones behind windows.

Meanwhile, nerves are soothed by taped-in music!

The recently completed ultramodern circular surgical wing was dedicated (Sept. 5) as a two-million-dollar addition to the 14-story Clinical Center at NIH.

Three recording rooms are in split-level relationship to other areas. Most of the clutter of wires and instruments formerly in

operating rooms is out of the surgeon's way. Separate operating suites for heart surgery and neurosurgery include the most recent medical electronic equipment.

Incandescent rather than fluorescent lights are used so the electric field from the fluorescence will not affect the extremely sensitive instruments used in depth electrography of the brain and in other operations.

Surgeons while operating can follow the patient's heart rate, blood pressure and other body functions on display boards which give continuous readings.

A heart-lung machine takes care of the heart patient while the surgeon cuts into the life organ, thus making the operation a seemingly bloodless one.

A suture holder keeps loose threads in order so the doctor can work with several at a time.

An instrument table provides sterilization with ultraviolet light until the very second the surgeon calls for an instrument to probe into the heart.

Four new operating rooms are provided in the four-story circular addition.

• Science News Letter, 84:194 Sept. 28, 1963

Share the Thrills of Exploring Outer Space



\$194⁹⁵

All DYNASCOPES, including this superb RV-6, 6-inch available on easy terms!

Now it's easy to join the thousands of serious amateurs who have discovered the excitement of exploring our mysterious universe. Your enjoyment begins right from the start, yet the challenges and rewards go on for years! And it's a hobby that can be shared at modest cost.

Choose from a Full Range Of DYNASCOPES® 4" Starting at \$49.95

Picking a telescope to fit your needs and your pocketbook is simple when you select a DYNASCOPE — the same instruments used by more than 150 schools, colleges and observatories. Prices begin as low as \$49.95, and your satisfaction is guaranteed by a full-refund warranty.

FASCINATING GUIDE YOURS FREE!

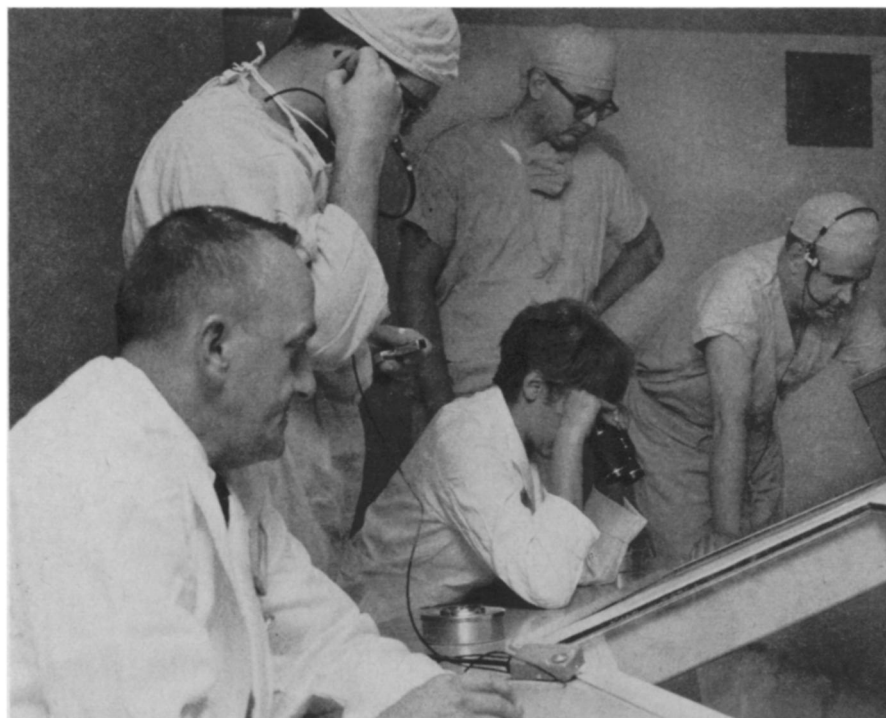
Read these valuable facts before buying any telescope. Mail coupon or postcard for your complimentary copy of this helpful guide.



Criterion Manufacturing Co.
331 Church St., Hartford 1, Conn.
© TM Registered U.S. Pat. Office

CRITERION MANUFACTURING CO.
Dept. NL-32, 331 Church St., Hartford 1, Conn.
Please send your free Telescope Guide.

Name _____
Address _____
City _____ State _____



National Institutes of Health

BIRD'S-EYE VIEW—Observers look down on open-heart surgery through observation room windows in the dome of the cardiac operating room of the surgical wing, Clinical Center.