

Lick Observatory, University of California

COMET IKEYA-SEKI—This comet, discovered by Kaoru Ikeya and T. Seki, amateur Japanese astronomers, was on its most brilliant display Oct. 20 when it reached perihelion, the point at which it was closest to the sun. It is now heading farther out into space and will disappear from view sometime in 1966.

when another prominent display was expected, the dense swarm had passed close to Jupiter, and the gravitational pull of that planet changed the paths of the Leonids.

Every November we can see some of these meteors, so watch for them this year. The bright moonlight after midnight makes conditions somewhat unfavorable, but, as the 1965 Handbook of the British Astronomical Association points out, the Leonid shower usually has a high proportion of bright meteors, so it will still be worthwhile to keep watch.

November brings the year's third eclipse, on Nov. 23, which is not visible in this part of the world. Our troops in Viet Nam will be able to see it, however. The path along which it is visible starts in Afghanistan, then goes to the southeast across Pakistan, India, Nepal, Burma, Thailand and Viet Nam. After that it crosses the South China Sea and the islands of Borneo and New Guinea, before it ends in the Pacific Ocean near the Gilbert Islands.

This will be an annular eclipse; that is, the moon will be too far away to hide the sun completely. At the height of the eclipse, a ring of the solar disk will be visible around the dark moon. Over a large area, which includes most of southern Asia as well as Australia, people will see a partial eclipse.

Celestial Timetable for November

NOV. EST

- 1 3:26 a.m. Moon in first quarter
- 10:00 a.m. Moon farthest, distance 251,200 miles

- 2 1:00 a.m. Algol (variable star in Perseus) at minimum brightness
- 3 5:00 p.m. Moon passes south of Saturn
- 4 9:50 p.m. Algol at minimum
- 7 6:30 p.m. Algol at minimum
- 8 11:16 p.m. Full moon
- 12 3:00 a.m. Moon passes north of Jupiter
- 10:00 p.m. Mercury farthest east of sun
- 14 3:00 a.m. Moon nearest, distance 229,600 miles
- 15 3:00 p.m. Venus farthest east of sun
- 8:54 p.m. Moon in last quarter
- 17 early a.m. Meteors of Leonid shower at maximum
- 22 2:40 a.m. Algol at minimum
- 11:10 p.m. New moon, annular eclipse of sun, visible in Asia
- 24 11:30 p.m. Algol at minimum
- 25 midnight Moon passes south of Mars
- 27 1:00 a.m. Moon passes south of Venus
- 8:20 p.m. Algol at minimum
- 29 7:00 a.m. Moon farthest, distance 251,500 miles
- 30 5:10 p.m. Algol at minimum

Subtract one hour for CST, two hours for MST, and three hours for PST.

• Science News Letter, 88:266 October 23, 1965

Nature Note

Flatworms

➤ A LITTLE HIGHER up the scale of animal development from the jellyfish, anemone and corals of the phylum Coelenterata is the group known as the Platyhelminthes or flatworms. There are more than 9,000 species of these flat creatures and they are widely distributed throughout the world.

The flatworm phylum is divided into three classes: the free-living or true flatworms, and the two parasitic classes—the flukes and the tapeworms.

One of the more common true flatworms is the seemingly cross-eyed creature called *planarium*, a flat brownish worm about half an inch long and much studied and experimented upon in laboratories. Its tri-pointed head has two pigment-cup eyes placed on two light-sensory lobes in such a way that the worm looks comically cross-eyed. These light-sensitive eyes are the first traces of eyes to appear in the lower animals. One side of the animal is similar to the other side—an example of bilateral symmetry in the evolution of animal form.

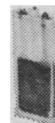
The trematoda or flukes live as parasites on many species of animals, and cause many serious diseases. Some live in livers, others in lungs and still others in the bloodstream. Looking somewhat like planarians, the flukes have two or more suckers for attaching themselves to and feeding upon their hosts.

Tapeworms are long ribbon-like worms that almost always live inside the intestines of animals and humans. Some grow to enormous lengths of 50 or more feet. These unpleasant creatures have no mouths or digestive apparatus—they just absorb much of their nutrition directly through their body wall from the intestinal contents of their host. A tapeworm's head is equipped with suckers or hooks to attach itself. Behind these stretch a whole series of sectional pieces, each one capable of reproducing sperms and eggs. When they grow to maturity, these pieces break off and pass out of the host animal.

• Science News Letter, 88:267 October 23, 1965

SCIENCE BARGAINS

BRAND NEW, INDUSTRIAL SURPLUS NICKEL-CADMIUM CELLS & BATTERIES BUY OF THE YEAR!



These hard-to-get, light-weight, 1.2V nickel-cadmium cells in rugged nylon cases have 4-amp. hour capacity. Hundreds of uses in industrial labs, engineering projects, school science and shop courses. Can serve as emergency power supplies, sources of power for electro magnets, test models, burglar alarms, telephone systems, communications equipment. Useful for experiments with St. Louis motor, the ripple tank, Wheatstone bridge, etc. Cells have almost unlimited life, will undergo thousands of discharge-charge cycles with practically no deterioration. Quickly charged—½ hour with proper equipment. Maximum maintenance; just add a few drops of water each year. Small amount of electrolyte used; cell sealed to prevent loss. Delivers almost 100% of output at below freezing temperatures where output is reduced 50% in lead-acid cells. No corrosive fumes given off under any state of charge. Can't be damaged by accidental charging in reverse (but not recommended). Cell meas. 6" x 2" x ½" thick. 6 ½ oz. Stud-type terminals on top 1 ¼" apart, marked for polarity; 6-32 thread, nuts and lock washers.

- ONE 1.2 VOLT NICKEL-CADMIUM CELL. Stock No. 40,798-Q \$3.95 Ppd.
- ONE 6-VOLT NICKEL-CADMIUM BATTERY; 7 cells in stainless steel, strap-type casing. Convenient power source for Edmund's war-surplus sniper scope. (No. 85,157). 6" x 2" x 4". Wt. approx. 2 lbs. Stock No. 70,776-Q \$15.00 Ppd.
- 7.2 VOLT NICKEL-CADMIUM BATTERY WITH CHARGER KIT. Assemble your own portable battery power supply with built-in charger. Excellent for portable movie light. Six-cell battery in stainless steel, strap-type casing; 12-volt transformer; charger circuit board consisting of rectifier and automatic regulating circuit (transistorized) which protects against overcharging of battery. Complete with wire, switch, line cord, hardware and instruction. 6" x 6" x 2". Wt. approx. 2 lbs. Stock No. 70,777-Q \$25.00 Ppd.

Explore the Fascinating World of Magnetism



NEW 23 MAGNET VARIETY KIT

11 Shapes! Many Compositions! Ever ripen tomatoes by magnetism—paint pictures using magnet as a brush and iron filings as paint? Surprising new ideas and uses for the bewildering forces of magnetism are continually discovered. Here, in one low-cost kit, you can learn and experiment with varied materials

that obsoleted Magnetite—the natural magnetic ore. This kit assortment includes ferrites, ceramics, flexible rubber, alnico in every shape imaginable—up to 20 lbs. pull. Sizes range from ¾" x 7/16" x 7/16" to 3" x 3" x 1/32". Incl.: alnico w/handle, U-shaped alnico, three—2 sided ceramic, flexible strip, alnico bar, ceramic, alnico disc w/center hole, 2 lg. alnico cyl. sin. alnico cyl. flex. sheet, 2 baby alnico bar, 3 chisel-type pole pieces for sim. ceramic magnets, bar magnet keeper, 2 disc magnet keepers, comp. info. and inst. Stock No. 70,780-Q \$5.00 Postpaid

BARGAINS GALORE! HOURS OF FUN! ONLY \$5 NEW POPULAR SCIENCE FUN CHEST



Here are Edmund's 9 top selling science toys and curiosities in one fascinating, low-cost package. Perfect gift item. Amuse and delight young and old for hours on end. Educational, too! Teach basic science principles in a wonderful new fun way. Incl.: Solar Radiometer—spins at 3,000 rpm. Albedo Bobbing Bird—runs continuously on thermal energy; Amazing Sealed Mercury Puzzle; Five 2-sided Ceramic Magnets; Big 3 ½" Burning Glass in Zip-Lip Poly Bag; Magnetic Doggie & Spinning Ball—ball spins as dog approaches; Diffraction Grating Rainbow Viewer; PICK-UP Ring with Edmund (AK); Popular booklet, "Astronomy and You". All in die-cut storage box with complete instructions. Stock No. 70,787-Q \$5.00 Ppd.

Pistol Grip! Tripod! Window Mount! Wrist Strap!

NEW SMALL BUT POWERFUL 10X TELESCOPE



Has Everything You Need!

Beautiful little instrument, 5" lg., fits hand perfectly, weighs only 7 ½ oz. Big objective lens—full 30mm diam.; prismatic; bright, wide-angle image. Perfect for vacationers, nature lovers, sportsmen, birdwatchers, etc. So compact, will fit in your pocket, ladies handbag, glove compartment, brief case, tackle box, etc. You're never without a rigid support—includes (1) 8" tripod (extends to 10", has rubber feet) with tilting-panning head; (2) pistol grip; (3) screw-in-wrist strap; (4) rubber padded car window mount. Threaded eyepiece for fast, smooth focusing from 20 ft. to infinity. 215-ft. field of view over 1000 yards. Coated objective and eyepiece. Fine, enamelled metal body, tan finish. 5 ½" x 2" x 2" zippered, simulated leather case. Stock No. 70,775-Q \$26.95 Ppd.

Order by Stock No.—Send Check or M.O. Shipment same day received—Satisfaction or money back.

TEACHERS: Write for Educational Catalog Q-2 Edmund Scientific Co., Barrington, N.J.

MAIL COUPON for FREE CATALOG "Q"

EDMUND SCIENTIFIC CO.
Barrington, New Jersey
Complete new 1966 Edition, 148 pages. Nearly 4000 BARGAINS.
Please Rush Free Catalog "Q"
Name
Address
City Zone . . . State . . .

