

# • SCIENCE SHORTS •

## A miscellany of happenings and information in various fields the world over

Some 50% of the land in the West is in Federal ownership.

An efficient, smokeless *incinerator* has been developed recently to help control air pollution and the growing mountains of bulky refuse produced in urban areas.

*Sclera*, the white-of-the-eye, has proved to be best material for achieving firm adhesion in repairing ruptures and detached retinas in many cases.

If detected early more than 90 out of 100 cases of cancer of the *vocal cord* may be cured by telecobalt radiation therapy.

Two U.S. Air Force flights will be made across the Antarctic coast to measure the increases in *ionospheric density* resulting from the precipitation of charged particles from the earth's radiation belts.

Roughly 30 million tons of *shells* have been dredged from San Francisco Bay since 1924.

A "*cutaneous alphabet*" composed of symbols designed to communicate by means of vibrators on the body has been designed.

The need for *metals* and minerals in the West has more than doubled during the last 10 years.

Wilm's *tumor*, originating in the kidney, is the second most common cancer found in infants and children.

Most of the lead and zinc deposits in the Mississippi basin, among the most extensive in the world, were formed through crystallization from fluids emitted from the earth's interior.

Vermont was the first state to eliminate brucellosis and cholera from *hogs*.

Production of the world's 49 *steel-making countries* hit the half-billion-ton mark for the first time in 1965.

All new *hospitals* built in New York State will be required to have emergency electric generators for use in case of power failure.

Radioactive *tracers* have been used to measure the extent of spoil movement from dumping sites in the Firth of Forth, Scotland.

The economic costs of traffic *accidents* in the Nation's Capital during 1965 were estimated at \$25.3 million.

Disposable oceanographic *instruments*, economical because they cost less to replace than to recover, are being used for data collection in the sea.

A machine that collects *alfalfa* leaves from a standing crop, leaving the stems undamaged to grow new foliage, is being developed.

Late Quaternary oyster shell deposits, exposed over a large portion of San Francisco Bay, constitute an important mineral source for *cement*, livestock feed and soil conditioners.

Snow surveys are an important factor in disclosing possible *avalanche* hazard.

Knowledge of the endurance of *fish* in relation to swimming speed may assist in the designing of fishing gear.

*Permafrost*, perennially frozen ground, can be as strong and as difficult to work with as concrete, requiring high explosives to excavate it.

For the first time, all six New England states have eradicated *brucellosis*, costly livestock disease, from their cattle.

Groups of *cardinals*, hand reared from the age of five to eight days, developed some of the simple sounds used by adults in their songs, but not the two- or three-part sounds.

Of 1,095 institutions surveyed, the State University of New York with 107,707 *students*, has the largest full-time enrollment.

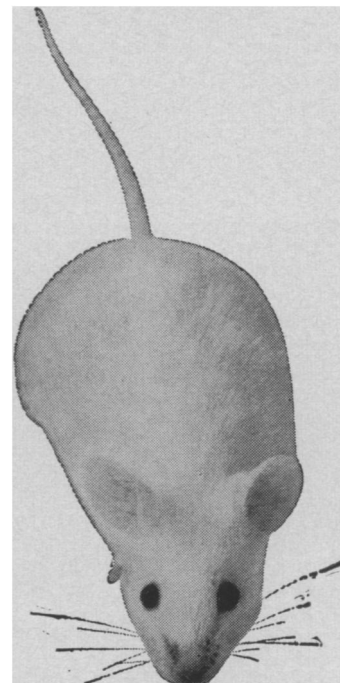
The *skeleton* of a two- to three-year-old child who died more than 50,000 years ago, has been found in the Cabara cave on Mount Carmel in Israel.

Damage from *landslides* in the United States is estimated to cost the taxpayer and property owner hundreds of millions of dollars in direct and indirect costs yearly.

The swimming endurance of Atlantic *cod fish* decreases sharply as swimming speed increases.

• Science News, 89:251 April 9, 1966

THIS SPACE CONTRIBUTED BY THE PUBLISHER



## Take 1500 mice to lunch.

Food and care of 1,500 mice for one day cost \$10.00 in cancer research laboratories throughout the country. Man's best friend may turn out to be the research mouse! Every day experiments are being conducted with mice to find answers to cancer's riddles. Is cancer virus-caused? Can drugs be developed to cure it? To prevent it? Is there an immune mechanism against cancer?

The answers that cancer research scientists *must find* depend on your support. Your dollars are needed to continue the research attack on the disease that has been called man's cruelest enemy. Take 1,500 mice to lunch. With a check to your Unit of the American Cancer Society. Fight cancer, too, with a health checkup once a year. It's your best insurance against cancer.



american  
cancer  
society

**ENJOY KEEPING TRIM  
FREE INFORMATION  
Dept. A, 37 Centuck Station  
Yonkers, N.Y. 10710. Write:  
MINUTE-A-DAY®**