

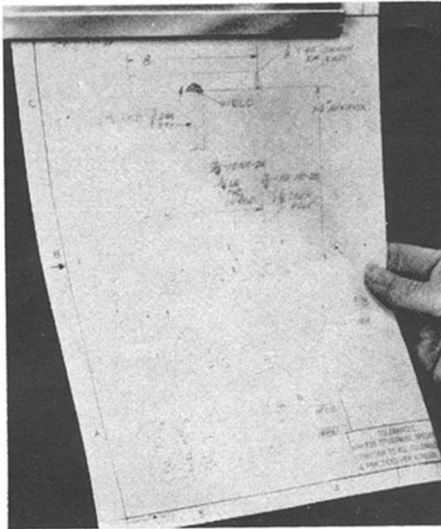
• New Ideas and Gadgets •

Ask for Gadget Bulletin 1367 for source information. Send self-addressed, stamped envelope to SCIENCE NEWS, 1719 N St., N.W., Washington, D.C. 20036.

⚙️ **LINT-FREE CLOTH** for use on sensitive electronic components and instruments, is nonabrasive, static-free and highly absorbent. Designed especially for manufacturers and users of precision equipment and scientific instruments, the lint-free and fuzz-free cloth allows either dry or solvent cleaning of surfaces. Cut on a bias in 9×9-inch squares, the cloths are packaged 300 to a box. Larger sizes are also available.

⚙️ **COFFEE COOLER SPOON** quickly lowers the temperature of any hot beverage. The gold-colored spoon made of a special metal that rapidly absorbs large amounts of heat helps save time for people in a hurry. Lightweight and similar in shape and size to a regular teaspoon, the cooler is suitable for use with tea, cocoa and soup as well as coffee.

⚙️ **BOWLING AID** is an automatic positioner that helps the bowler achieve more efficiency in directing the ball. The positioner helps provide a desirable pendulum motion with the ball centered and balanced so that the ball stays in line with the thrustline of the arm. The unit includes a special wristband with indicator, tape to put on the ball and a book of instructions.



⚙️ **NEW HANGER**, shown in photograph, for office, factory, school or home keeps important papers conveniently in view. Papers are inserted into the device, a 12-inch aluminum strip containing rollers, and remain firmly grasped until removed, simply by pulling. The unit, backed with pressure sensitive tape, can be mounted on any surface. A screw mounting is also available.

⚙️ **FASTENING TOOL** makes it easy for a person to attach plywood, clamps and other materials to concrete, cement, cinder block, brick, mortar or even steel up to three-sixteenths of an inch thick. To use, the drive rod of the tool is pulled out a short distance and a fastener is placed head first in the other end. The unit is then placed against the work and given several blows with a hammer. A large flange protects the hand.

⚙️ **PONTOON STABILIZER KIT** consists of two five-foot long by six-inch diameter pontoons made of lightweight polyethylene foam lashed to a pair of crossarms. Easily mounted, the pontoons give a canoe stability without affecting speed or smooth gliding. They are also suitable for canoes driven with small air motors or outboards.

⚙️ **CAMERA ROCKET** allows taking pictures of the earth from hundreds of feet in the air. The rocket camera is used as the nose section of a model and is shot into the air by rocket propulsion. As the rocket returns to earth, the camera takes a picture and returns safely to earth by a parachute recovery system. The camera adapts to various model rockets and pictures. Camera may be obtained separately or with rocket.

• Doctors Are Reading •

When Is Intoxication Legally Alcoholism?

➤ **NOW THAT** recent court decisions have recognized alcoholism as a disease—a position adopted by the American Medical Association 10 years ago—a diagnosis has to be worked out to meet medical and legal definitions.

So far, guidelines for diagnosis are not clear, said a statement by the AMA Committee on Alcoholism and Addiction, and the AMA Council on Mental Health in the *Journal of the AMA*, 197:582, 1966. Doctors themselves need education, along with policemen and other concerned groups, about issues of acute and chronic alcoholic infirmities.

Another problem faced by physicians, said the statement, is to get those general hospitals that do not now admit alcoholics to do so.

Hives Traced to Menthol

➤ **A TEEN-AGED** girl with a two-week siege of hives (urticaria) is reported to be the second case due to menthol, Lt. Comdr. E. M. McGowan of the department of dermatology, U.S. Naval Hospital, Philadelphia, said in the *Archives of Dermatology*, 94:62, 1966.

The girl had been smoking a half-pack of mentholated cigarettes a day, eating candy mints, using mint-flavored toothpaste and mentholated medication. Increased exposure to cough drops, aerosol room spray and mentholated ointment was noted just before the outbreak of hives. When the doctor ordered her to stop all sources of mint and menthol, she was free of hives in two days. Two weeks later she again developed hives after drinking iced tea

with mint flavoring. Later sensitivity tests showed menthol to be at fault.

Chronic urticaria due to menthol is probably not a rare condition, Dr. McGowan said, but one that will be established more often as physicians learn of menthol's sensitizing potential.

U.S. Trails in Women Physicians

➤ **THE UNITED STATES** is trailing in the number of women doctors, not only compared with the USSR, which boasts that 65% to 85% of its medical school enrollment consists of women, but with other countries in Europe, in Asia and in Latin America.

Dr. John Z. Bowers, president of the Josiah Macy Jr. Foundation, New York, questioned apparent discrimination against women in this country who could fill the need especially for pediatricians and for doctors of child and adolescent psychiatry.

Only 9.1% of medical school enrollment in the United States is female as opposed to an estimated 35% in India, 30% in Malaysia, 25% in Thailand, 30% in Germany, 20% in the Netherlands, 15% in Australia and 22.5% in Israel. Chile has 20% women physicians and Brazil 13%.

Women who are mothers should be able to complete their education and training on something more flexible than the lockstep of "on 24 hours and off 24 hours" that is one of the obsessions in hospital internship and residency. Dr. Bowers said in the *New England Journal of Medicine*, 275:362, 1966.