

# Films of The Week

Listing for readers' information of new 16mm and 8mm films on science, engineering, medicine and agriculture for professional, student and general audiences. For further information on purchase, rental or free loan, write to distributor.

**CHEMISTRY OF THE CELL I: THE STRUCTURE OF PROTEINS AND NUCLEIC ACIDS.** 16mm, color, sound 21 min. Begins with views of cell in process of division, and a discussion of the cell's major components. Then explores the nature of amino acids, proteins, and DNA, and analyzes the need for and means of their exact duplication following cell division. Audience: High school and college biology courses. Purchase \$250 from McGraw-Hill Films, Dept. WP, 330 West 42nd St., New York, N.Y. 10036.

**CHEMISTRY OF THE CELL II: THE FUNCTION OF DNA AND RNA IN PROTEIN SYNTHESIS.** 16mm, color, sound, 16 min. Raises question of how the process of cell growth takes place and is controlled. Then discusses the physical and chemical properties of DNA and RNA, showing how they act to control and bring about the synthesis of cell proteins in the ribosome. Audience: high school and college courses. Purchase \$190 from McGraw-Hill Films, Dept. WP, 330 West 42nd St., New York, N.Y. 10036.

**CORPS PROFOND.** 16mm, color, sound, 22 min. Shows the intricate workings of the body's interior filmed using a special universal endoscope developed at the French National Research Center. Shows a variety of parts of the body including the pituitary gland, ear bones and tympanic membranes, and peritoneal cavity including the liver, gallbladder, and intestines. Audience: physicians. Free loan information from Association Films, 600 Grand Avenue, Ridgefield, N.J. 07657 or other local offices. (Produced for Schering Corporation).

Bantam Science and Mathematics

## THE CHANGING EARTH

By Judith Viorst

of SCIENCE SERVICE

Introduction—

By Frank C. Whitmore

U.S. Geological Survey

Preface—

By Watson Davis

Director Emeritus

SCIENCE SERVICE

A new introduction to the fascinating science of modern geology . . . describes the forces that have molded the earth's changing face through geologic time, the effect of water, wind and earthquakes.

**75¢** Wherever Bantam Books are sold

To Order By Mail (Add 5¢ Handling Charge)

Remit to:

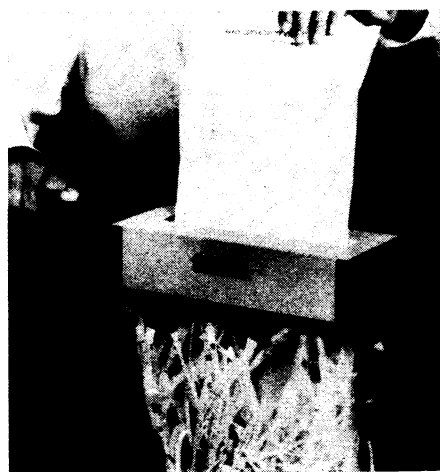
Science News  
Public Service Dept. No. 78  
1719 N Street, N.W.  
Washington, D.C. 20036

# New Ideas and Gadgets

New Ideas and Gadgets is an editorial service to readers; more information on items can be secured from the manufacturers.

## Hand Paper Shredder

This manual portable shredder operates without electricity and attaches almost anywhere with two clamps. Useful in plant or office, it destroys



paper quickly and easily a few sheets at a time. The shreds drop down into a reusable plastic bag.

Electric Wastebasket Corp., 145 West 45th St., New York, N.Y. 10036

## Fluoride Ion Checker

Direct measurement of the activity and concentration of fluoride ion activity and concentration is quickly made by this fluoride ion activity electrode. It is useful for continuous monitoring of fluoridated water supplies or industrial process control and fluoride metabolism in plants and animals. Usable with any expanded pH meter, the body of the unit is made of unbreakable plastic immune to acids and bases.

Orion Research Inc., 11 Blackstone St., Cambridge, Mass. 02139

## Microprojector

Helpful for lectures and classroom work, this instrument combines a microscope with a built-in illuminating system and projector. The slide or specimen is placed on the stage and focused, and the image is projected on an eight-inch screen. Magnification ranges from 50x to 800x. For photomicrography the viewing screen is replaced with a film or plate.

William J. Hacker & Co. Inc., P.O. Box 646, West Caldwell, N.J. 07006

## CLASSIFIED

Classified advertisements are accepted for the following classifications: Books, Business Opportunities, Camps, Colleges, Micro Ads, Personals, Positions Wanted, Services, Travel. All advertisements must be consonant with the character of Science News. Rates . . . single insertion 25¢ a word. Minimum charge is \$5.00. Count 2 extra words for Box and Numbers. Classified advertising is payable in advance. Closing date 3 weeks prior to publication (Saturday).

Employment opportunities are accepted at regular display rates, subject to agency commission. Minimum size 1 inch. Minimum charge \$21.70 per inch. Rate cards available upon request.

To speed up insertion, address classified advertising . . . Classified Ads. Science News, 1719 N Street, N.W. Washington, D.C. 20036

## BOOKS

**GRASSES AND WEEDS.** Comprehensive list free. LEWIS, 2510 Van Ness Avenue, San Francisco, Calif. 94109.

## MICRO ADS

**FAIRCHILD SEQUENCE CAMERA \$75.00.** Cost government \$650.00. Send 25¢ for our surplus optics-electronics 82 page catalog. Meshna, Nahant, Mass. 01908.

**MICROSCOPES, BINOCULAR,** wide field stereo binoculars, Filar eyepiece micrometer, B L photomicrographic camera. Priced low. Callea, 338 Laurelton, Rochester, N.Y. 14609.

## TRAVEL

**WORLDWIDE FREIGHTER GUIDE—\$1.25.** Contains rates, schedules on 700 passenger carrying Freight Lines. Travltips, Dept. SNJ, 40-21 Bell Blvd., Bayside, New York 11361.

**WFF 'N PROOF**

The **GAME** for THINKERS

Can you solve this problem?

1. There are three numbered statements in this box.
2. Two of these numbered statements are not true.
3. The average increase in I.Q. scores of those who learn to play WFF 'N PROOF is more than 20 points.

**Is statement No. 3 true?**

**A NEW DIMENSION IN EDUCATIONAL GAMES**

**WFF 'N PROOF: The GAME of MODERN LOGIC** \$6.00 (plus \$5.50 postage and handling)

**EQUATIONS: The GAME of CREATIVE MATHEMATICS** \$3.00 (plus \$5.50 postage and handling)

**ON-SETS: The GAME of SET THEORY** \$4.00 (plus \$5.50 postage and handling)

by Professor Layman E. Allen

---

**WFF 'N PROOF**

Box 71-PE New Haven, Conn.

Please send me . . . WFF 'N PROOF . . . ON-SETS . . . EQUATIONS I enclose \$ . . . and understand that if I am not completely satisfied, I can return the games in 10 days for a full refund of the purchase price.

Name . . . . .

Address . . . . .

City . . . . . State . . . . . Zip . . . . .

**Refund and return privileges guaranteed!**  
Dealer Inquiries Invited

**WFF 'N PROOF**