

3 PET SEAHORSES \$2.00 & FREE HITCHING POST

ORDER selected FRESH caught LIVE Seahorses sent Air Mail from Fla. Orders receive a kit with FREE food, Seahorse hitching post, our catalog and simple instructions for raising these exotic little pets in a jar or fishbowl. Guaranteed live delivery U.S.A. TWO SEAHORSES & ONE FREE ONLY \$2.00. THREE PAIR SPECIAL—\$3.50—Order TWO PAIR & receive ONE PAIR FREE.



F. F. MARINE LIFE (Since 1960)
P.O. Box 248-SL-69 Dania, Fla. 33004

SCIENCE PROJECT MATERIALS



Components For Science Projects

Send for catalog listing brochures, telling how to construct:

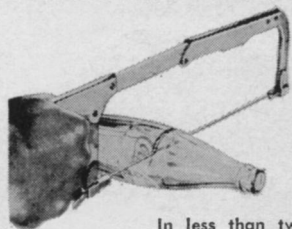
- Vacuum Gauges
- McLeod Gauges
- Tesla Coils
- High Vacuum Kits
- 500,000 Volt Electrostatic Generators
- Components for all above and many others listed in catalog.

Free catalogs, send 15¢ for postage. Experiments in Electrostatics . . . book of experiments you can do, 50¢.

MORRIS and LEE

Dept. SN-10A68
1685 Elmwood Ave., Buffalo, N.Y. 14207

CUT ANY MATERIAL WITH SUPER-HACK



In less than two minutes you can rip thru the hardest piece of metal (a FILE). This amazing tungsten-carbide saw will make curves, notches, straight cuts in materials formerly considered to be unsawable! You can cut glass, glazed tile, bricks, tool steel, marble,

and with very little effort. Famous cousin of diamond, the furnace-made tungsten carbide now joins the saw blade (a duPont development) and you have this miracle blade. Fits any hacksaw. Ship as follows:

- 1 at \$2.79 3 for \$6.20
6 for \$2 ea. (total \$12) ppd.
 24 @ \$1.60 ea. (total \$38.40) ppd.

Order by Mail MEREDITH SEPARATOR

Dept. YSN
310 West 9th St., Kansas City, Mo. 64105

films OF THE WEEK

Listing is for readers' information of new 16mm and 8mm films on science, engineering, medicine and agriculture for professional, student and general audiences. For further information on purchase, rental or free loan, write to distributor.

CHANGING THE WEATHER. 16mm, color, sound, 29 min. Review of research which is being conducted to study clouds and air currents and the ways these affect local weather conditions. Several studies are depicted, including investigations of the composition of clouds, effects of different temperatures on air currents, the composition of particulate matter in the atmosphere, and the ways in which this matter triggers rain or snow formation. Audience: senior high, college, adult. Purchase \$240 from NET Film Service, Indiana University, Audio-Visual Center, Bloomington, Ind. 47401.

COMPOSITES. 16mm, b&w kinescope, sound, 30 min. Introduces the history of composites, from the ancient use of straw in bricks to the sophisticated materials of the present age; e. g., those consisting of aligned boron filaments suspended in an epoxy resin matrix. Describes how the materials may be made and how they may be adapted to a variety of industrial needs. Special application of composite materials in the design and fabrication of rotor blades for helicopters is discussed. Audience: scientists and engineers in industry, general audience with technical background. Purchase \$100 or rental \$6.10 from Audio Visual Services, The Pennsylvania State University, University Park, Penna. 16802 (Inquire for price of video tape version).

GROWING UP SAFELY. 16mm, color, sound, 25 min. Statistics show that approximately one-half of all children who die between the ages of one and fifteen years die as the result of accidents. Film shows how effective accident prevention training for children can be based on the simple rule-of-thumb pattern of correlating safety training with the child's level of development, and suggests suitable approaches to teaching the child to assume responsibility for his own safety. Audience: parents, teachers. Purchase \$300 from McGraw-Hill Films, Dept. DF, 330 West 42nd St., New York, N. Y. 10036.

THE HIDDEN WORLD: A STUDY OF INSECTS. 16mm, color, or b&w, sound, 24 min. Reveal study of the color and drama of insect life. Audience: intermediate grades through adult. Purchase color \$296 or b&w \$151 from Encyclopaedia Britannica Educational Corporation, 425 North Michigan Ave., Chicago, Ill. 60603.

LOCI I. 16mm, b&w, sound, 20 min. A locus may be defined either as a set of points satisfying some law or as the path of a point which moves according to some law. Shows a number of loci being constructed and discusses their description in words and symbols. A familiar locus is that of a point equidistant from two fixed lines, and this is illustrated graphically. Audience: high school, college. Purchase \$120 or rental \$12 from Peter M. Roebeck and Company, 230 Park Ave., New York, N. Y. 10017. (A BBC-TV Production).

LOCI II. 16mm, b&w, sound, 20 min. The parabola, normally described algebraically, has no simple means of describing it geometrically. The properties of a circle are mainly implicit in the method of drawing a parabola. Purpose of film is to tie together the geometrical and algebraic approach and to examine, side by side, the equations of the circle and the parabola. Construction of a parabola is shown by considering it both as a locus and as an envelope. Audience: high school, college. Purchase \$120 or rental \$12 from Peter M. Roebeck and Company, 230 Park Ave., New York, N. Y. 10017 (A BBC-TV Production).

Letters from p. 335

MENSA, write American Mensa Selection Agency, P.O. Box 86, Gravesend Station, Brooklyn, N.Y. 11223. Information about MM may be obtained by writing MM 16-64th Place, Long Beach, Calif. 90803.

Anne E. Carr
New York, N.Y.

The needed effort

Sir:

You know of my keen interest in the subject of thermal effluents from electric power plants (SN: 8/17, p. 164). The information provided will be useful resource material for me and my staff. It is good to know that journalists such as yourself are making the needed effort to inform and explain to the public the ramifications of these environmental problems our nation faces today.

(Senator) Joseph D. Tydings
Washington, D.C.

Metric shift

Sir:

Thank you for printing my letter ("Shift to Metric," Letters, SN: 5/25).

Having been away this summer on a grant to study more physics, I was not aware of the response until quite recently. Needless to say, the letters to the editor (SN: 7/6) in response were most gratifying. I also heard from some of the correspondents directly, and have become a member of the Metric Association.

Now that the bill calling for a study on such a switch has been signed into law, perhaps we can soon get on with it.

Peter E. Roohr
Wisconsin State University
Superior

Address communications to Editor,
Science News, 1719 N Street, N.W.
Washington, D. C. 20036

SCIENCE NEWS

Copyright © 1968 by Science Service, Inc. Republication of any portion of SCIENCE NEWS is strictly prohibited.

Subscription rate: 1 yr., \$7.50; 2 yrs., \$13.50; 3 yrs., \$19.50. Special trial offer: 39 weeks, \$3.97. Single copy, 25 cents. No charge for foreign postage. Change of address: Three weeks' notice is required. Please state exactly how magazine is addressed. Include zip code.

Printed in U.S.A. Second class postage paid at Washington, D. C. Established as Science News Letter® in mimeograph form March 13, 1922. Title registered as trademark U. S. and Canadian Patent Offices. Indexed in Reader's Guide to Periodical Literature, Abridged Guide and the Engineering Index. Member of Audit Bureau of Circulation. UNSOLICITED MANUSCRIPTS will not be returned unless accompanied by a stamped, self-addressed envelope.

Published every Saturday by SCIENCE SERVICE, Inc., 1719 N St., N.W., Washington, D. C. 20036. North 7-2255. Cable Address: SCIENSERV.

ADVERTISING

L. D. Young, Advertising Director, SCIENCE NEWS, 1719 N St., N.W., Washington, D. C. 20036. Phone 202-667-8945.

Advertising Representatives: SCRIPPS-HOWARD NEWSPAPERS. General Advertising Department: 200 Park Ave., New York, N.Y., TN 7-5000; 400 N. Michigan Ave., Chicago, Ill., SU 7-3355; Suite 211, Braniff Building, Dallas, Tex., PL 7-3847; 908 E. Northland Tower, Southfield, Mich., 444-4595; 6363 Wilshire Blvd., Los Angeles, Calif., OL 3-0026; Room 1522, Philadelphia National Bank Building, Philadelphia, Pa., LO 3-6275; 100 California St., San Francisco, Calif., 989-5570; Suite 417, 3384 Peachtree Rd., N.E., Atlanta, Ga. 261-1571.

