

Break the Hate Habit.

Hate Blacks! Hate Whites! Hate Jews! Hate Gentiles! What sane person needs any of that noise? So how do you turn it off? With love. And all the caring, kindness and consideration that love means. Start today, lover.



**Break the hate habit:
love your neighbor.**

Advertising contributed for the public good



COMP-U-KIT IS COMING!

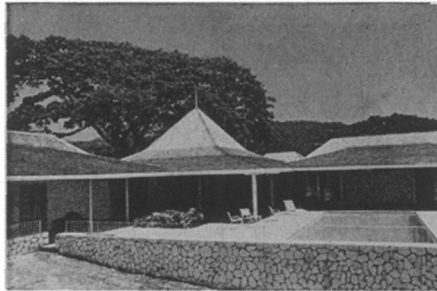
COMP-U-KIT \kɒmp-yü-kit\ n:

computer micro-circuits uniquely mounted for easy inter-connection, connecting cords, and a book which tells all (about computer logic).

Experimenters, hobbyists, students, and teachers, write right now for free illustrated literature.

Scientific Measurements, Inc.
Dept. C103 — 9701 N. Kenton
Skokie, Illinois 60076

JAMAICA



THE UNIQUE SUMMER VACATION VILLA/CAR HOLIDAYS

We have more than 80 Private Luxury Homes Available on the Caribbean's most beautiful island. Ideal for families or groups of friends. Come Spend the VACATION of a Lifetime!

PRICED FROM \$8.00 PER PERSON/PER DAY *
EACH VILLA INCLUDES

- Private Pool or beach
- Two to six air conditioned bedrooms
- Cook and maid
- Automatic Ford Cortina with unlimited mileage

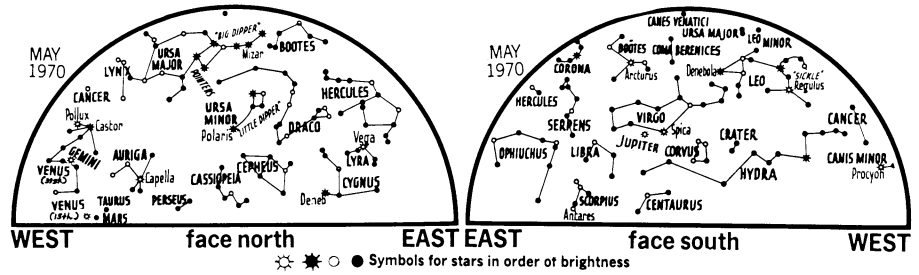
* Based on six persons sharing a 3 bedroom villa. Accepting 1971 Winter Reservations—Daily from \$13.50/person.

Please Forward Your 1970 Color Brochure

PARK TRAVEL AGENCY, INC.
413 Park Ave.,
Scotch Plains, N.J. 07076

NAME
ADDRESS
CITY & STATE ZIP

ASTRONOMY



Transit of Mercury

by James Stokley

On May 9 Mercury will pass directly in front of the sun, producing the rather rare event called a transit of Mercury.

The earth moves around the sun every year in a nearly circular path about 186 million miles in diameter. The other planets move in larger or smaller orbits that are nearly in the same plane as ours. They are inclined to the plane of our orbit by different amounts—seven degrees in the case of Mercury. Every 116 days Mercury catches up to earth and comes approximately between us and the sun. Because of the inclination of its orbit it's usually north or south of the sun.

This position of Mercury is called "inferior conjunction." If it occurs when the planet is passing from one side of the earth's orbital plane to the other there will be a transit. Through a telescope, Mercury will appear as a small black spot against the bright solar disk. This event happens on May 9.

Transits can come about May 8 and Nov. 10. The last occurred on Nov. 7,

1960, and the last in May on the 5th in 1957. There will not be another May transit in the 20th century but there will be three more in November. These will come in 1973, 1986 and 1999. Accurate timing of Mercury's entrance from it provide a good check on the motions of the planet. These are affected by many factors, particularly the pulls of the other planets.

On May 9 Mercury will begin to move across the sun several hours before it rises in the United States and Canada. The transit will be in progress at sunrise in the eastern and central parts of North America. Farther west it will be over by sunrise. At 8:13 a.m., EDT, the planet will move off the solar disk.

To see Mercury in transit you'll need a telescope properly equipped for solar observation.

The maps show the sky at about 11:00 p.m., local daylight saving time, on May 1; an hour earlier on the 15th and two hours earlier at month's end. □

CELESTIAL TIMETABLE

May	EDT	
2	7:00 p.m.	Saturn behind sun
3	5:00 p.m.	Mars passes north of Aldebaran
5	10:51 a.m.	New moon
6	3:00 a.m.	Venus passes north of Aldebaran
7	1:00 p.m.	Moon passes north of Venus
	3:00 p.m.	Moon passes north of Mars
9	12:20 a.m.	Mercury in transit across face of sun
	8:13 a.m.	
	6:00 a.m.	Venus passes north of Mars
12	10:00 p.m.	Moon farthest, distance 251,100 miles
13	6:26 a.m.	Moon in first quarter
	9:00 p.m.	Moon passes north of Regulus
18	7:00 p.m.	Moon passes south of Jupiter
20	11:38 p.m.	Full moon
21	4:00 p.m.	Moon passes south of Antares
25	4:00 a.m.	Moon nearest, distance 228,700 miles
27	6:32 p.m.	Moon in last quarter

