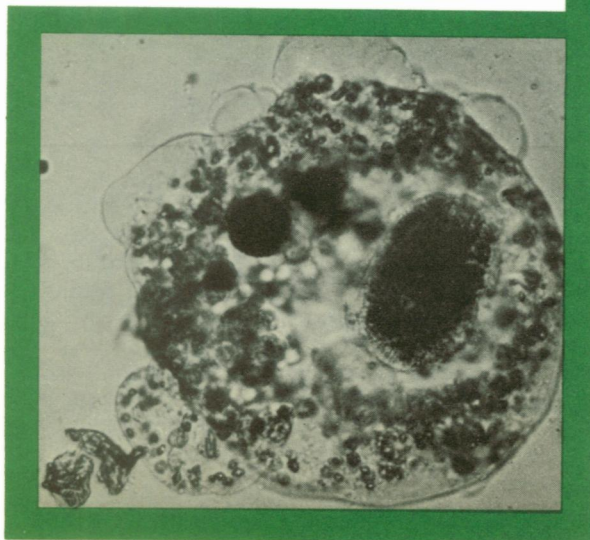
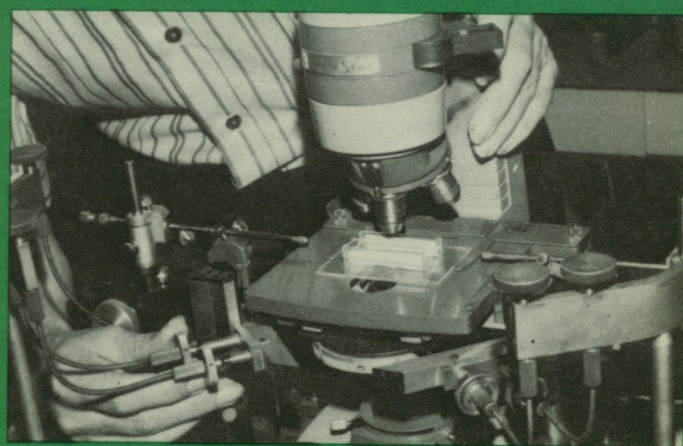
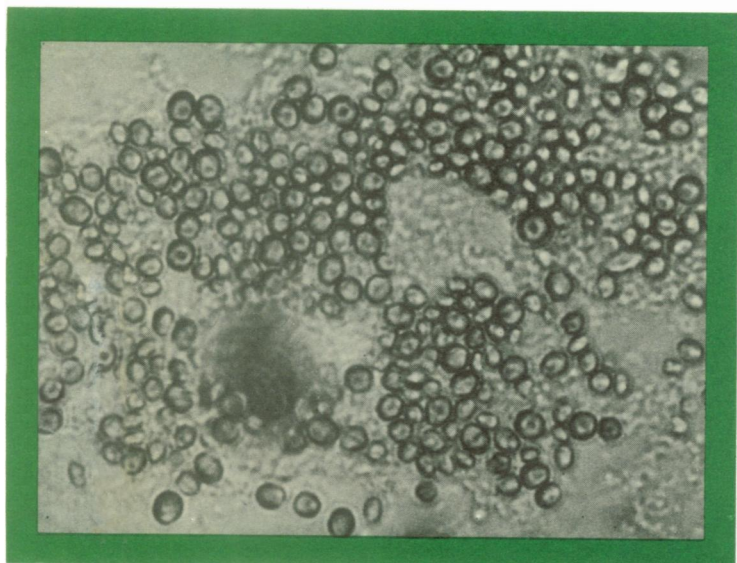


science news

Aug. 28 and Sept. 4, 1971
vol. 100, nos. 9 and 10, pp. 133-160



**How close is
genetic engineering?**

A Science Service Publication
Vol. 100/ Aug. 28 & Sept. 4, 1971
Nos. 9 and 10
Incorporating Science News Letter

Watson Davis, 1896-1967
Publisher: E. G. Sherburne Jr.

Managing Editor: Kendrick Frazier

DEPARTMENTS

Aerospace: Everly Driscoll

Behavioral Sciences: Robert J. Trotter

Earth Sciences: Louise Purrett

Environmental Sciences: Richard H. Gilluly

Medical Sciences: Joan Lynn Arehart

Physical Sciences: Dietrick E. Thomsen

Copy Editor: Nadine Clement

Production: E. Cherry Doyle

Production Assistant: Esther Gilgoff

Books: Margit Friedrich

Advertising: Scherago Associates, Inc.

Circulation: Gustave T. Wescott

Copyright © 1971 by Science Service, Inc.,
1719 N Street, N.W., Washington, D.C. 20036.
Republication of any portion of SCIENCE NEWS
is strictly prohibited.

SUBSCRIPTION DEPARTMENT
231 WEST CENTER STREET
MARION, OHIO 43302

Subscription rate: 1 yr., \$7.50; 2 yrs., \$13.50;
3 yrs., \$19.50. Special trial offer: 39 weeks,
\$3.97. Single copy, 25 cents. \$1.00 per year for
foreign postage. Change of address: Four to
six weeks' notice is required. Please state
exactly how magazine is to be addressed. In-
clude zip codes.

Printed in U.S.A. Second class postage paid at
Washington, D.C. Established as Science News
Letter® in mimeograph form March 13, 1922.
Title registered as trademark U.S. and Cana-
dian Patent Offices. Indexed in last Science
News of June and December, in Reader's Guide
to Periodical Literature, Abridged Guide and
the Engineering Index. Member of Audit Bu-
reau of Circulation. UNSOLICITED MANU-
SCRIPTS will not be returned unless accom-
panied by a stamped, self-addressed envelope.

Published every Saturday by SCIENCE SER-
VICE, Inc., 1719 N St., N.W., Washington, D.C.
20036. 202-667-2255. Cable Address: SCIEN-
SERV.

ADVERTISING STAFF

Director: EARL J. SCHERAGO

Advertising Sales Manager:

RICHARD L. CHARLES

Production Manager

BONNIE F. SEMEL

Address all advertising to Scherago Associates,
11 W. 42nd St., New York, N.Y. 10036.

Sales: New York, N.Y. 10036: Herbert L. Burk-
lund, 11 W. 42 St. (212-PE-6-1858); Scotch
Plains, N.J. 07076: C. Richard Callis, 12 Unami
Lane (201-889-4873); Medfield, Mass. 02052:
Richard M. Ezequelle, 4 Rolling Lane (617-444-
1439); Chicago Ill. 60611: John P. Cahill, Room
2107, 919 N. Michigan Ave. (312-DE-7-4973);
Beverly Hills, Calif. 90211: Winn Nance, 111 N.
La Cienega Blvd. (213-657-2772).

september 4, 1971

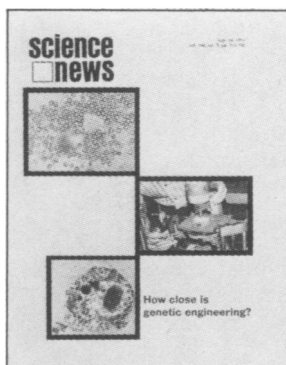
OF THE WEEK

- 137 The decision to send a scientist to the moon
- 138 Progress in kidney dialysis
An armadillo aids leprosy research
- 139 Neon successful in deep-dive simulations
- 140 Support for two-dimensional superconductivity
New test for lung cancer
- 141 HEW reports on mine safety
Acetaldehyde in space
OST releases 1969 SST report
Lease on life for Aldabra
- 142 Thunderstorms: Effects on ionosphere
Lightning: Distribution observed by satellite
- 143 Patent policy revised for U.S.-financed inventions
- 148 **Earth Sciences:** Fractured sea-floor crust; Arctic Ocean climatic history; Climatic past in Australia; Transatlantic geotraverse; Under-ground waste disposal
- 149 **Behavioral Sciences:** Revamping attitudes about death; Commercial sperm banks; Mothers as therapists; Drug abuse program director; Silicone breast injections
- 150 **Physical Sciences:** Muonium in free radicals; Superconducting LINAC; Star orbiting a black hole; Southern X-ray sources; Cosmic-ray antiprotons; Superconducting lead in accelerators

IN SCIENCE FIELDS

- 152 **Biology:** Realities of genetic engineering
- 154 **Astronomy:** Revamping Pluto's mass
- 156 **Environment:** Mercury in old specimens
- 157 **Astronomy:** The M13 globular cluster

- 134 Letters to the Editor
- 151 Books of the Week
Films of the Week
- 158 New Products



Fertilizing a human egg in the lab is probably closer than human genetic engineering, scientists closest to the scene say. See p. 152. (Two photos of amoebas after surgery by Linda Kakascik, New York University. Photo of cell surgeon and prospective engineering equipment by Joan Lynn Arehart)

SCIENCE SERVICE

Institution for the Popularization of Science founded 1921; a non-profit corporation

Board of Trustees—Nominated by the American Association for the Advancement of Science: **Wallace R. Brode** (Treasurer), American Chemical Society, Washington, D.C.; **Bowen C. Dees**, The Franklin Institute, Philadelphia, Pa.; **Athelstan Spilhaus**, Woodrow Wilson International Center for Scholars, Washington, D.C. Nominated by the National Academy of Sciences: **Gerald F. Tape**, Associated Universities, Washington, D.C.; **Allen V. Astin**, National Bureau of Standards, Washington, D.C.; **Frederick Seitz**, Rockefeller University, New York, N.Y. Nominated by the National Research Council: **Leonard Carmichael**, National Geographic Society, Washington, D.C.; **Jacob Rabinow**, Control Data Corp., Rockville, Md.; **Glenn T. Seaborg** (President), U.S. Atomic Energy Commission, Washington, D.C. Nominated by the Journalistic Profession: **Gordon B. Fister**, Call-Chronicle Newspapers, Allentown, Pa.; **Julius Duscha**, Washington Journalism Center, Washington, D.C.; **O. W. Riegel** (Secretary), Washington and Lee University, Lexington, Va. Nominated by the E. W. Scripps Trust: **Milton Harris**, Washington, D.C.; **Edward W. Scripps II** (Vice President and Chairman of the Executive Committee), Edward W. Scripps Trust, New York, N.Y.; **John Troan**, Pittsburgh Press, Pittsburgh, Pa.

Director: E. G. Sherburne Jr.; Assistant Director: Dorothy Schriver; Things of Science: Ruby Yoshioka.