

# new products

**Plastic raised relief maps** from U.S. Army Topographic Command are represented in five-colors. The maps show terrain, woodland areas, hydrographic details and manmade features of over 300 key areas of the eastern-western regions of the U.S. mainland, Alaska and Hawaii. As part of the National Topographic Map series, they were originally compiled from topographic maps of the U.S. Geological Survey, aerial photographs, state highway maps, county maps and other available information. They are useful in planning projects extending over large areas, for studies of environmental and ecological situations, for courses in geography, geology and social studies. They provide a basis for direct visual reference to hiking trails, campsites, ski slopes and vacation travel.

*Hubbard Scientific*

Circle No. 157 on Reader Service Card

**Model rocketry program** for the educator tells how to introduce model rocketry (miniature astronautics) into the curriculum. Each kit contains a teacher's guide, catalog and certificate worth \$1.00 on your first-class order.

*Estes Industries*

Circle No. 158 on Reader Service Card

**Anatomical and physiological models**, charts and related visual aids are available as teaching tools for secondary schools, medical and nursing schools. Each reflects standards of excellence and are the finest and most complete selections of anatomical and physiological teaching aids offered.

*Clay Adams Co.*

Circle No. 159 on Reader Service Card

**Orbit shaker** is the only type in its field to have over an eight-gallon capacity. It provides accurate temperature control from 5°C to 100°C ± 0.5°C and as low as 5°C above coolant temperature with cooling coil. The unit uses solid-state speed control, and is continuously variable from 0 to 400 orbits per minute. It has an automatic timer that permits settings between 1 to 60 minutes, or can be set for continuous operation. It also features a built-in unbreakable thermometer, and a variety of interchangeable platforms are available for holding all sizes of flasks, beakers, test tubes and vessels.

*Lab-Line Instruments, Inc.*

Circle No. 160 on Reader Service Card

**Incubator** allows students to make a fascinating study of the chick embryo and the hatching process, in school or at home. It allows students accurate control in hatching of eggs, and permits

the class to observe the embryo in various stages of development. The incubator is compact and light weight. It takes up little classroom space, is highly portable, so students can take it home weekends if they wish. After hatching, chicks may be kept in the unit; the sliding doors will let them go in and out as they would from a real coop.

*Kemtec Educational Corp.*

Circle No. 161 on Reader Service Card

**Liquid crystal kit** opens up the world of scientific liquid crystals to high school, college and science fair students. Each kit contains enough materials to enable students to carry out six or more separate experiments with liquid crystals. Many deviations in the experimentation are also possible. Complete instruction is provided. The suggested experiments include liquid crystal mixtures, thermal mapping, thermal diffusivity, measurement of radiated energy by a point source, and others.

*Liquid Crystal Industries, Inc.*

Circle No. 162 on Reader Service Card

**Mobile air pollution control lab** is a trailer-mounted system that can be pulled into a plant and put into operation by making a few connections. It is designed to analyze the nature of pollutants in industrial waste gases and fumes. The 6,000-pound travel lab is a complete air pollution control system consisting of scrubbing devices, pumps, valves and instrumentation.

*Koertrol Corp.*

Circle No. 97 on Reader Service Card

**Litter pick-up device** is self-propelled and will travel at 2½ to 6 miles per hour depending upon topographic conditions. Feet steering frees both hands for litter pick up.

*Welton Industries Inc.*

Circle No. 98 on Reader Service Card

**Water quality meter** provides for direct measurement of salinity, conductivity and temperature. The unit is solid-state and battery powered, and is designed for convenient field measurement in waters ranging from good quality raw water to seawater. Salinity can be read directly from 0 to 40 parts per thousand and the reading is temperature compensated.

*Yellow Springs Instrument Co.*

Circle No. 99 on Reader Service Card

**Carbon monoxide monitor** is a portable battery-operated unit with a direct meter readout. The monitor has a simple one-step operation, and will provide a rapid on-the-spot analysis of CO in ambient air. The monitor uses an electrochemical oxidation process, which is capable of accurately measuring to less than 1 ppm CO with a precision of ± 1% full scale.

*Energetics Science Inc.*

Circle No. 100 on Reader Service Card



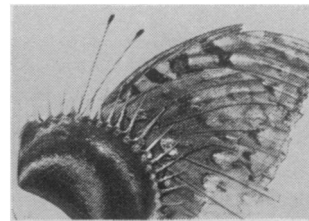
Quantitative brainwave feedback and monitoring system  
free booklet!

Box 627 C  
Menlo Park,  
Ca. 95460

phone:  
707-937-0064

Circle No. 122 on Reader Service Card

## SCIENCE STUDY SPECIAL



### CARNIVOROUS PLANTS

Fascinating plants lure, eat insects. Venus Fly Traps, Huntsmen Horns, Pitcher Plants, Sundews, Butterworts, Cobra Lily, other exotic wonders. Introductory 6 Fly Trap bulbs, planting material, \$2.00 postpaid. With greenhouse \$3.95. Classroom sets available. Illustrated catalog 25c. Plant Oddities, Box 127S, Basking Ridge, N.J. 07920.

Circle No. 127 on Reader Service Card

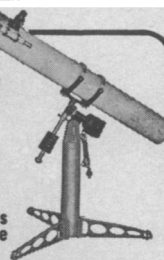
## ENVIRONMENTAL EQUIPMENT CATALOG-FREE



For your copy of new 448-page Catalog 20, Write:

**Forestry Suppliers, Inc.**  
P. O. BOX 8397  
205 W. RANKIN STREET  
JACKSON, MISSISSIPPI 39204

## Share the Thrills of Exploring Outer Space



All DYNASCOPES, including this superb RV-6, 6-inch available on easy terms!

Now it's easy to join the thousands of serious amateurs who have discovered the excitement of exploring our mysterious universe. Your enjoyment begins right from the start, yet the challenges and rewards go on for years! And it's a hobby that can be shared at modest cost.

Choose from a Full Range of DYNASCOPES® 4" Starting at \$49.95

Picking a telescope to fit your needs and your pocketbook is simple when you select a DYNASCOPE — the same instruments used by more than 150 schools, colleges and observatories. Prices begin as low as \$49.95, and your satisfaction is guaranteed by a full-refund warranty.

FASCINATING GUIDE YOURS FREE!

Read these valuable facts before buying any telescope. Mail coupon or postcard for your complimentary copy of this helpful guide.



Criterion Manufacturing Co.  
331 Church St., Hartford, Conn. 06101

© TM Registered U. S. Pat. Office

CRITERION MANUFACTURING CO., Dept. NL-96  
331 Church St., Hartford, Conn. 06101

Please send your free Telescope Guide.

Name \_\_\_\_\_  
Address \_\_\_\_\_  
City \_\_\_\_\_ State \_\_\_\_\_

Circle No. 125 on Reader Service Card