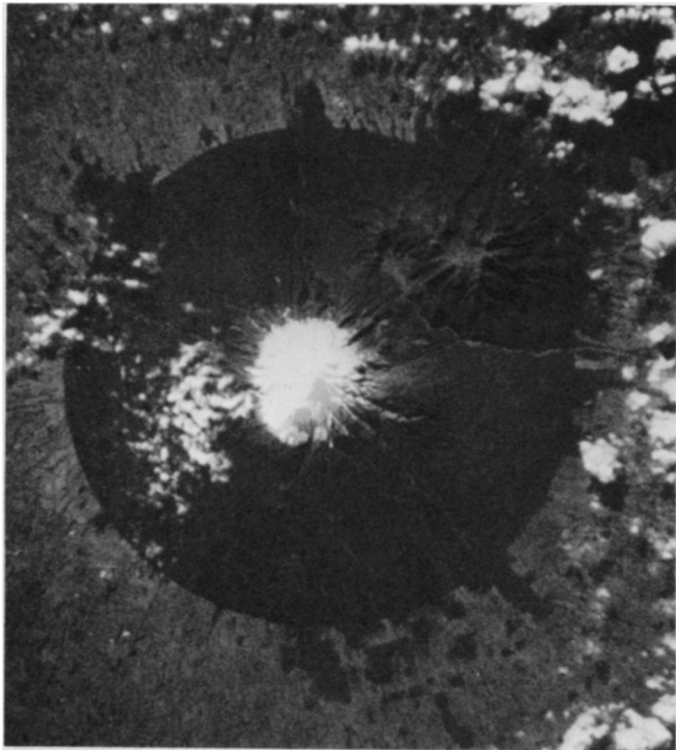


Photos: NASA

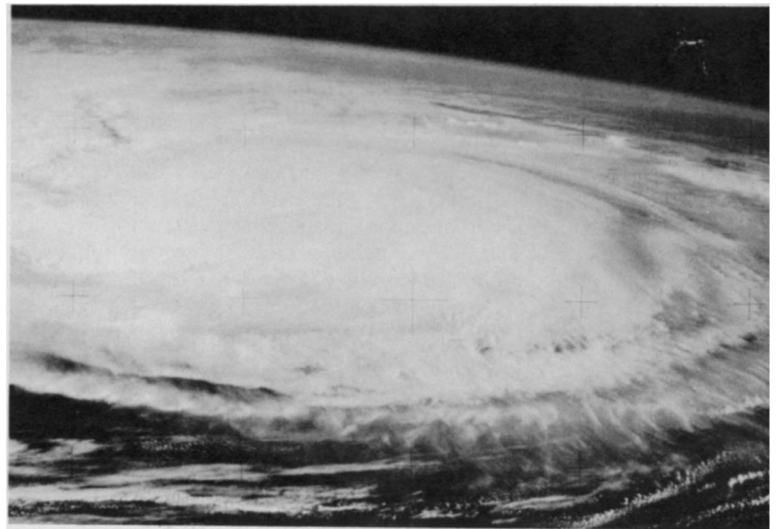


The eyes of Skylab

Scars on the earth, the weather above them, natural resources and the works of humans all came in the ken of the questing cameras of Skylab 2



Almost 40 miles across, ring-shaped Manicouagan Reservoir (top left) in Quebec is all that remains of a mighty meteorite impact; unusual cloud vortices (center left) were spotted over Guadalupe Island. Even from hundreds of miles up, Chicago (top right) reveals roads, population densities, pollution for land-use planners. A snow-covered volcanic peak in New Zealand (bottom left) has as spectacular symmetry as seething Hurricane Ellen over the Atlantic Ocean (below).



october 20, 1973

249