

Albert Einstein.

1946

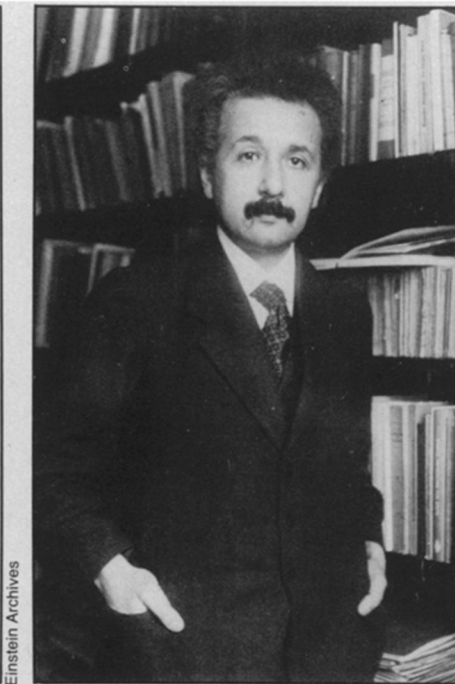


Model

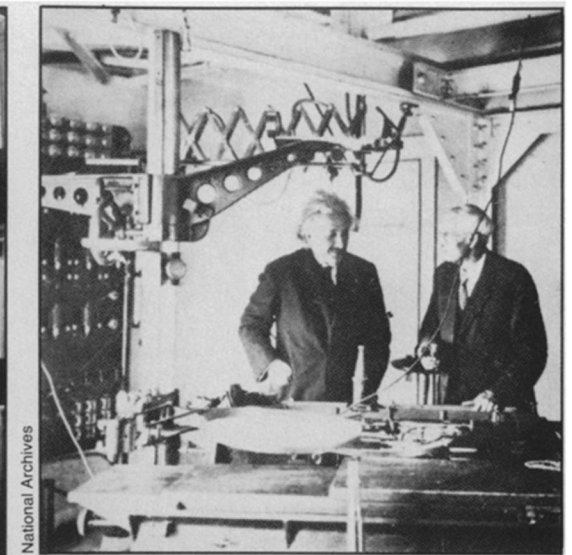
In later years, following his fame as a pioneering theoretician, the photogenic Einstein posed increasingly frequently for photographers, painters and sculptors. The story even circulates about how once, when asked to list his profession on a questionnaire, he penned "artists' model."



Photos collected with the help of the Smithsonian Institution.

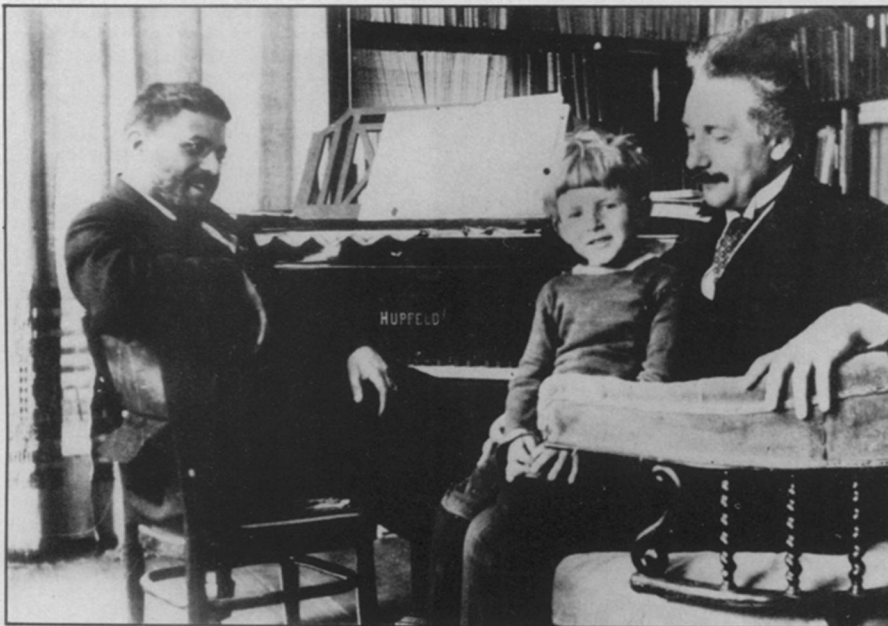


Einstein Archives



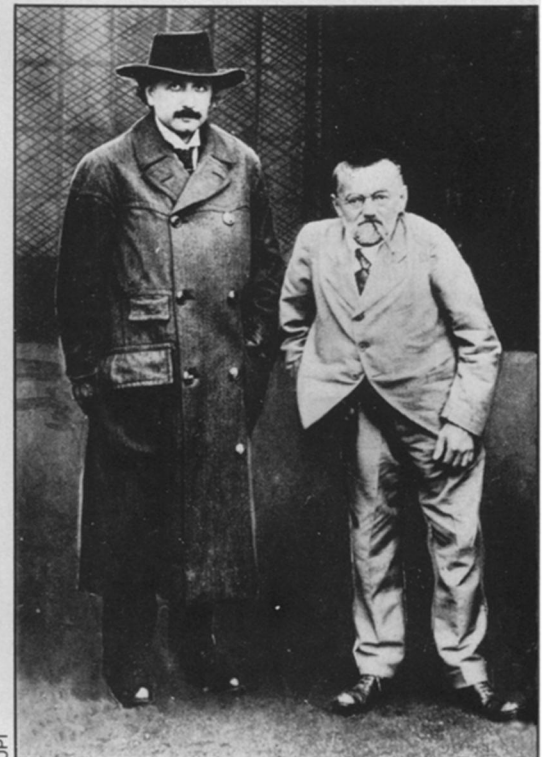
Einstein Archives National Archives

With C. E. St. John at Mt. Wilson Observatory.



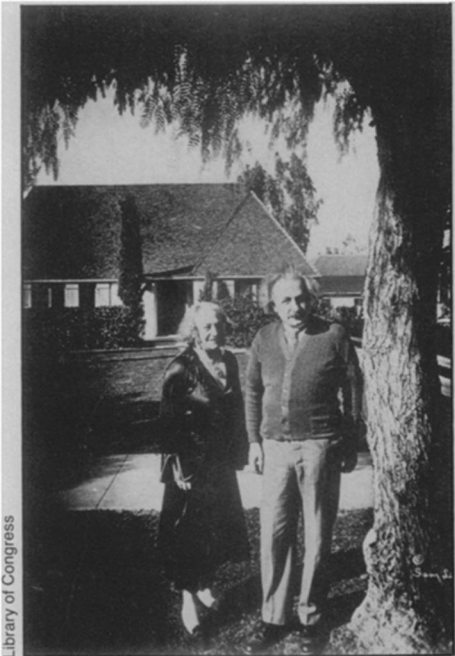
AIP

With pianist-physicist Paul Ehrenfest and son in Leiden, circa 1921.



JPI

With C. P. Steinmetz; in 1920s.



Library of Congress

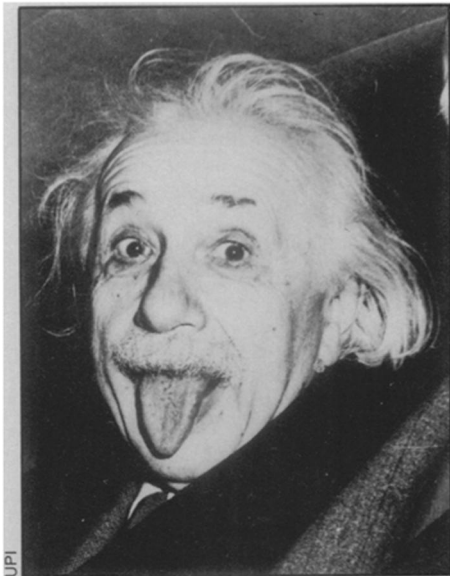
*With wife, Elsa, in Pasadena; 1932.*



AIP

AIP

*Protesting nuclear weapons (above); taking U.S. oath of allegiance in 1940 with secretary, left, and daughter Margot (inset).*



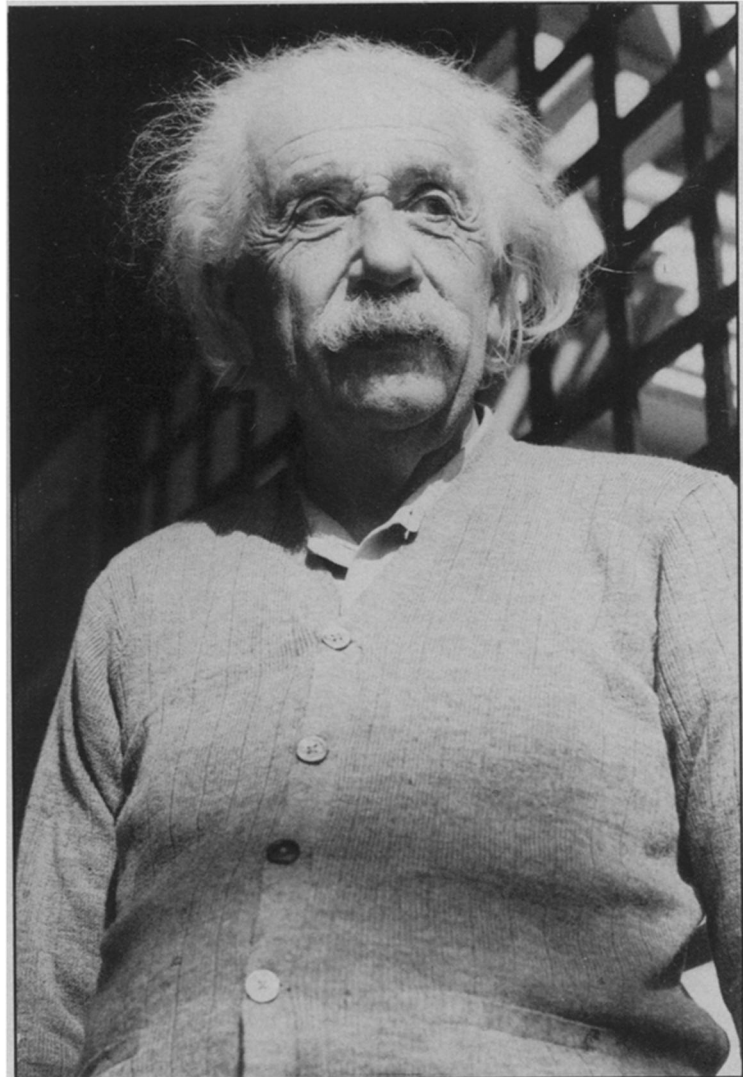
UPI

*Asked to smile on his 72nd birthday; 1951.*



New York Times

*Einstein, wearing headdress, with Elsa and Hopi Indians at the Grand Canyon.*



Inst. for Advanced Studies