

OF THE WEEK

Tour de force: Interferon produced	52
Superbubble in Cygnus	53
Antipsychotic drugs may cause psychosis	53
Proposed OSHA regulations spark debate	54
Cosmological four-way spread	54
College projections: Smaller, more stringent	55
Agent Orange effects coming to light	55

RESEARCH NOTES

Physical Sciences	56
Biomedicine	56
Biology	57
Science & Society	57

ARTICLES

Finch song: A matter of hormones	58
Thymus: From the kitchen to the lab	61

DEPARTMENTS

Science on TV	51
Books	60

COVER: Only the male zebra finch (right) courts and sings. His song depends on a system of interconnected brain areas. Hormone treatment at two stages of life, however, can masculinize the female brain and allow her to sing like a male. See story p. 58. (Photo: Arthur P. Arnold, UCLA)

Publisher	E. G. Sherburne Jr.
Editor	Robert J. Trotter
Senior Editor and	
Physical Sciences	Dietrick E. Thomsen
Behavioral Sciences	Joel Greenberg
Biomedicine	Joan Arehart-Treichel
Earth Sciences	Susan West
Life Sciences	Julie Ann Miller
Policy/Technology	Janet Raloff
Space Sciences	Jonathan Eberhart
Contributing Editors	Lynn Arthur Steen (mathematics) Kendrick Frazier John H. Douglas Michael A. Guillen
Science Writer Intern	Linda Garmon
Assistant Editor	Judy Klein
Art Director	Dale Appleman
Assistant to the Editor	Angela Musick
Books	Jane M. Livermore
Business Manager	Donald Harless
Advertising	Scherago Associates 1515 Broadway New York, N.Y. 10036 Fred W. Dieffenbach, Sales Director

Copyright © 1980 by Science Service, Inc., 1719 N St., N.W., Washington, D.C. 20036. Republication of any portion of SCIENCE NEWS without written permission of the publisher is prohibited.

Editorial and Business Offices
1719 N Street, N.W.
Washington, D.C. 20036

Subscription Department
231 West Center Street
Marion, Ohio 43302
To subscribe call: (1) 800 — 247-2160

Subscription rate: 1 yr., \$15.50; 2 yrs., \$27.00; 3 yrs., \$37.50 (Add \$3 a year for Canada and Mexico, \$4 for all other countries.) Change of address: Four to six weeks' notice is required. Please state exactly how magazine is to be addressed. Include zip code.

Printed in U.S.A. Second class postage paid at Washington, D.C. Title registered as trademark U.S. and Canadian Patent Offices.

Published every Saturday by SCIENCE SERVICE, Inc. 1719 N St., N.W., Washington, D.C. 20036. (202-785-2255)
ISSN 0036-8423

SCIENCE ON TV

SCIENCE NEWS prints the latest written word of scientific developments and noteworthy news. We've set this space aside to inform our readers of programs of scientific interest that are scheduled on television. Check your local listings for exact times.

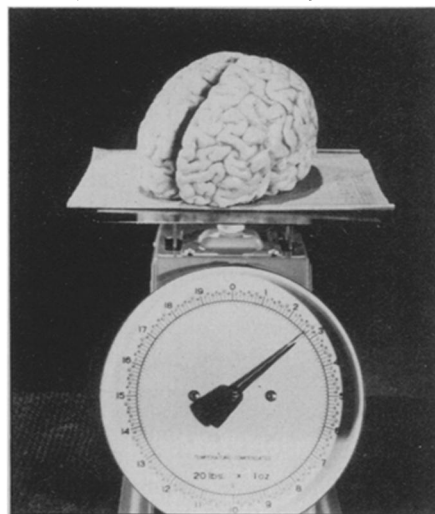
• **Feb. 4 (PBS) National Geographic Society — "Mysteries of the Mind"** explores the "last great frontier"—the human mind. The territory is not totally unexplored, however, as 500 new scientists join the field each year in the United States alone. An examination of the areas being studied includes the effect of sleep on brain activity and the functions of sleep and dreaming, the role of the brain in human health—with a look at the concomitant areas of acupuncture and hypnotism—and the voluntary control (by Zen monks and Indian yogis, among others) of such basic body functions as breathing and heart rates.

• **Feb. 5 (PBS) NOVA — "Living Machines"** Originally scheduled to be aired last month, this program offers a look at the world of the natural engineers—scientists who examine nature through engineers' eyes in an effort to understand not only how living things work but *why*, as well. Included is unique high-speed footage of insects in flight, illustrating previously unknown aerodynamic principles.

• **Feb. 11 (PBS) Cousteau Odyssey — "Clipperton"** explores treasures of that East Pacific island.

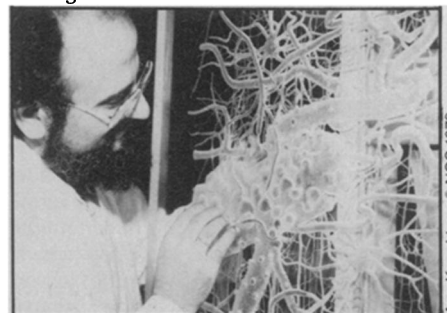
• **Feb. 12 (PBS) NOVA — "Einstein"** is a repeat look (it was first broadcast March 15) at the man whose theory of general relativity revolutionized the world of science. The program, though, in addition to presenting Einstein the myth reveals, through the use of rarely seen archival footage, a look at Einstein the man.

This 3-pound mass holds many secrets.



• **Feb. 19 (PBS) NOVA — "Portrait of a Killer"** illustrates the process and progress of cardiovascular disease—the number one cause of death in the United States. A Swedish television production, the program features the collaboration of photographer Lennart Nilsson and pathologist Jan Lindberg. Filmed inside the human body, through the use of specially rigged electron microscopes and a lens Nilsson has perfected that has a focal length of half a millimeter, white blood cells are shown attacking invaders and absorbing deficient cells. In addition to the remarkable film footage, the program includes an analysis of risk factors, such as smoking, cholesterol intake, stress and hypertension.

Plexiglass model of brain nerve cells.



• **Feb. 26 (PBS) NOVA — "Still Waters"** Originally broadcast in 1978, this program documents the year-long life cycle of a pond. Behind its placid image, the pond is shown to be an area seething with life in, on, under, around and above it.

• (NBC) — **"The Body Works"** is a five-part monthly series for young people on the workings and wonders of the human body. The host, Dr. Timothy Johnson, is joined each week by three young "assistants" who help him explain such processes as digestion, circulation and respiration. The program is being syndicated nationally, but it will be necessary to check local listings for days and times.

• (PBS) **Voyage of Charles Darwin**, which began Jan. 27, continues. Feb. 3 "My Mind Was a Chaos of Delight" chronicles Darwin's first collecting expedition in Brazil; Feb. 10 "How Wide Was the Distance Between Savage and Civilized Man" tells of Darwin's first major discovery of fossilized bones of extinct species, on Argentina's coastal cliffs; Feb. 17 "Can Any Mountains, Any Continent Withstand Such Waste?" details Darwin's skirmish with Europeans trying to exterminate Indians, and his hypothesis for the formation of the Andes; Feb. 24 "I Felt Myself Brought Within Reach of That Great Fact, That Mystery of Mysteries" shows how an earthquake confirmed Darwin's theory of land mass movement and observation of the animal life of the Galapagos Islands led to the theory of *The Origin of Species*. (See Books, p. 60.)