

## THIS WEEK

Theoretical model for X-ray bursters 52  
Female obesity and diabetes 52  
NASA's report card 53  
Doubts about hyperactivity-diet link 53  
Massive star controversy 54  
Test-tube replication system 54  
Thalassemia mechanism pinpointed 54  
An algal algae killer 55  
Court orders TMI restart stopped 55  
Estimating flood intervals 55

## RESEARCH NOTES

AAAS 58  
Astronomy 59  
Earth Sciences 59

## ARTICLES

International aspects of radwaste storage 60

## DEPARTMENTS

Science on the Air 51  
Books 63

**COVER:** The glass cylinder was manufactured during a nonradioactive test run at the AVM vitrification plant in France. For a look at how France and other countries are dealing with their nuclear waste problem, see page 60

PUBLISHER: **E. G. Sherburne Jr.**

EDITOR: **Joel Greenberg**

SENIOR EDITOR/PHYSICAL SCIENCES:  
**Dietrick E. Thomsen**

BEHAVIORAL SCIENCES: **Wray Herbert**

BIOMEDICINE: **Joan Arehart-Treichel**

CHEMISTRY: **Linda Garmon**

EARTH SCIENCES: **Cheryl Simon**

LIFE SCIENCES: **Julie Ann Miller**

POLICY/TECHNOLOGY: **Janet Raloff, Ivars Peterson**

SPACE SCIENCES: **Jonathan Eberhart**

CONTRIBUTING EDITORS: **Lynn Arthur Steen (mathematics), Kendrick Frazier, John H. Douglas, Michael A. Guillen**

SCIENCE WRITER INTERN: **Laura Tangley**

ASSISTANT EDITOR: **Judy Klein**

ART DIRECTOR: **Elizabeth G. Clark**

ASSISTANT TO THE EDITOR: **Betsy Gordon**

BOOKS: **Jane M. Livermore**

BUSINESS MANAGER: **Donald R. Harless**

ADVERTISING: **Scherago Associates, 1515 Broadway, New York, N.Y. 10036, Fred Dieffenbach, Sales Director**

Copyright ©1982 by Science Service, Inc., 1719 N St., N.W., Washington, D.C. 20036. Republication of any portion of SCIENCE NEWS without written permission of the publisher is prohibited.

**Editorial and Business Offices**  
1719 N Street, N.W.  
Washington, D.C. 20036

**Subscription Department**  
231 West Center Street  
Marion, Ohio 43302

Subscription rate: 1 yr., \$22.50; 2 yrs., \$39.00; 3 yrs., \$55.00. (Add \$3 a year for Canada and Mexico, \$4 for all other countries.) Change of address: Four to six weeks' notice is required. Please state exactly how magazine is to be addressed. Include zip code. For new subscriptions only Call (1) 800-247-2160. Printed in U.S.A. Second class postage paid at Washington, D.C. Title registered as trademark U.S. and Canadian Patent Offices. Published every Saturday by SCIENCE SERVICE, Inc. 1719 N St., N.W., Washington, D.C. 20036. (202-785-2255)

ISSN 0036-8423

JANUARY 23, 1982

# SCIENCE ON THE AIR

SCIENCE NEWS prints the latest written word of scientific developments and noteworthy news. We've set this space aside to inform our readers of programs of scientific interest that are scheduled on television and radio. Check your local listings for exact times.

● **Feb. 3 (PBS) National Geographic Society — "Egypt: Quest for Eternity"** looks at the legacy left by ancient Egyptians, who spent lifetimes preparing for life after death. The focus of the program is on Ramses II, one of history's most prolific builders and an influence on nearly all of ancient Egypt's surviving temples and monuments. Two teams of Americans are currently working to preserve this legacy from the ravages of the elements and vandalism.



Anne B. K. Krumbhaar © NGS 1981

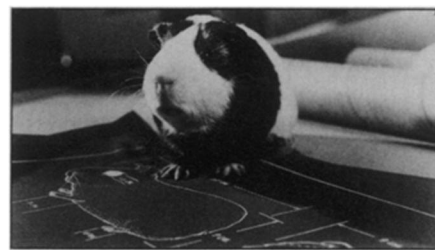
## Series

● (PBS) **"Life on Earth": Feb. 2 "The Swarming Hordes"** examines the symbiotic relationship between plants and insects; **Feb. 9 "Conquest of the Waters"** looks at the world of fish, with 30,000 species ranging from those that live in 100-degree water to those that live in the freezing Antarctic; **Feb. 16 "Invasion of the Land,"** in examining the ancestors of amphibians, includes the first films of a coalacanth, a fish thought until 1938 to be extinct; **Feb. 23 "Victors of the Dry Land"** features the Galapagos Islands, the last places on earth ruled by reptiles.

● (PBS) **"The Natural History of a Sunbeam": Feb. 6 "Light and Life, Part II"** looks at experimental evidence to demonstrate sunlight's role in the formation of molecules; **Feb. 13 "A Leaf from Nature, Part I"** unlocks the secret of earth's energy production cycle, using ordinary and extraordinary substances; **Feb. 20 "A Leaf from Nature, Part II"** probes the mysteries of photosynthesis using such sophisticated methods as laser technology and "streak" photography; **Feb. 27 "Candles from the Sun, Part I"** is a survey of methods used for supplying light and heat, from the discovery of fire to the utilization of fossil fuels.

● **"Omni"** is a syndicated science series of one-half-hour programs inspired by OMNI magazine. Check local listings for more complete program information. **Week of Feb. 1** features a look at a new airplane that is revolutionizing the sport of weekend flying, oil and mineral exploration in space and a gas-producing tree in Brazil; **week of Feb. 8** includes a segment on the use of electromagnetism to promote healing of severely damaged bones and blood vessels, an imaginary trip through the solar system in the year 2500 and a look at the first generation of "computer children"; **week of Feb. 15** examines a simple diagnostic test for spinal meningitis using the blood of the horseshoe crab, the possibility of controlling extreme weather conditions from space and shows the many uses to which lasers are being put; **week of Feb. 22** features an overview of past and present robots, including Omnivac, the first robot to act on instructions from a human voice.

● (PBS) **"NOVA": Feb. 7 "Finding a Voice"** explores the most severe speech disabilities with Dick Boydell, a victim of cerebral palsy who demonstrates technical breakthroughs that allow those with speech handicaps to communicate; **Feb. 14 "The Video Explosion"** looks at the past, present and future of American television, including the controversy among TV analysts about how advances in technology will affect TV viewers; **Feb. 21 "The Asteroid and the Dinosaur"** examines the theory proposed by physicist Luis Alvarez, his son Walter, a geologist, and nuclear chemists Frank Asaro and Helen Michel to explain the sudden extinction of dinosaurs 65 million years ago; **Feb. 28 "Life: Patent Pending"** is a close-up look at genetic engineering breakthroughs and their impact on industry, medicine and academia.



Michael Lutch for WGBH

## SCIENCE SERVICE

Institution for the public understanding of science founded 1921; a nonprofit corporation.

**Board of Trustees** — *President*, **Glenn T. Seaborg**, University of California, Berkeley, CA; *Vice President*, **Gerald F. Tape**, Associated Universities, Washington, DC; *Treasurer*, **Milton Harris**, Washington, DC; *Secretary*, **Julius Duschka**, Washington Journalism Center, Washington, DC; **Allen V. Astin**, Bethesda, MD; **Joseph W. Berg Jr.**, National Research Council, Washington, DC; **Edward Bliss Jr.**, Newburyport, MA; **Bowen C. Dees**, The Franklin Institute, Philadelphia, PA; **David A. Goslin**, National Research Council, Washington, DC; **Elizabeth Neufeld**, National Institutes of Health, Bethesda, MD; **O. W. Riegel**, Glasgow, VA; **Edward W. Scripps II**, Edward W. Scripps Trust, Carson City, NV; **Willis Harlow Shapley**, Washington, DC; **John Troan**, Pittsburgh Press, Pittsburgh, PA; **Deborah P. Wolfe**, Queens College of City University of New York, Flushing, L.I., NY.

Director: E. G. Sherburne Jr.; Assistant Director: Dorothy Schriver; Business Manager: Donald R. Harless.