

SCIENCE NEWS

The Weekly Newsmagazine of Science

A Science Service Publication
Volume 122, No. 17, October 23, 1982

E. G. Sherburne Jr. Publisher
Joel Greenberg Editor
Dietrick E. Thomsen Senior Editor/
Physical Sciences
Judy Klein Assistant Editor
Wray Herbert Behavioral Sciences
Joan Arehart-Treichel Biomedicine
Linda Garmon Chemistry
Cheryl Simon Earth Sciences
Julie Ann Miller Life Sciences
Janet Raloff, Ivars Peterson Policy/Technology
Jonathan Eberhart Space Sciences
Joanne Silberner Assistant to the Editor
Ileana Mendez Art Director
Robert Pollie Science Writer Intern
Jane M. Livermore Books
Donald R. Harless Business Manager
Scherago Associates Advertising
Fred Dieffenbach, Sales Director
1515 Broadway, New York, N.Y. 10036

Copyright © 1982 by Science Service, Inc.,
Editorial and Business Offices
1719 N St., N.W., Washington, D. C. 20036.
Republication of any portion of SCIENCE NEWS
without written permission of the publisher is
prohibited.

Subscription Department
231 West Center Street, Marion, Ohio 43302

Subscription rate: 1 yr., \$27.50; 2 yrs., \$47.50; 3
yrs., \$67.00. (Foreign postage \$5.00 additional per
year.) Change of address: Four to six weeks' notice
is required. Please state exactly how magazine is to
be addressed. Include zip code. For new
subscriptions only call (1) 800-247-2160. Printed in
U.S.A. Second class postage paid at Washington,
D. C. Title registered as trademark U. S. and Canadian
Patent Offices. Published every Saturday by
SCIENCE SERVICE, Inc. 1719 N St., N.W.,
Washington, D. C. 20036. (202-785-2255)
ISSN 0036-8423

Science on the Air

Science News prints the latest written word of scientific development and noteworthy news. We've set this space aside to inform our readers of programs of scientific interest that are scheduled on television and radio. Check your local listings for exact times. (R) indicates a repeat broadcast.

- Nov. 24 (PBS) "There Was a River Called The Missouri" is a look at the effect of congressional regulations on the river.

Series

- (PBS) "The Body in Question" (R): Nov. 5 "Breathless" explains what may cause breathlessness and demonstrates that the understanding of breathing forms the basis of much modern diagnosis; Nov. 12 "Blood Relations" discusses the ways blood has been looked at over the years; Nov. 19 "Heart of the Matter" explores the history of thinking on how the heart works; Nov. 26 "Shaping the Future" reviews what happens at the moment of conception and how a fertilized egg is transformed into a full-grown adult.
- (PBS) "Nature": Nov. 7 "Kopje: A Rock For All Seasons" is a study of huge outcroppings of

This Week

- 260 New Vehicle for Reliable Gene Transplant
- 260 Avoiding the 'plastic look' in computer-generated color images
- 261 Biological structure, nature of matter are topics of Nobel prizes
- 262 Making painkillers... naturally
- 262 Speedier licensing for nuclear power plants
- 262 Anorexia nervosa: A brain shrinker?
- 263 VA yields control of Agent Orange study
- 263 EPA restricts use of pesticide toxaphene

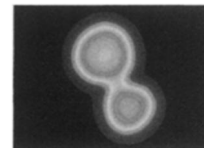
Research Notes

- 270 Behavior
- 270 Space Sciences
- 271 Technology
- 271 Earth Sciences

Articles

- 266 Tracing the Roots of a Gypsy
- 269 Quantum Mechanics by Computer

Cover: A moment in the collision of a lanthanum nucleus with a krypton nucleus. This is a still from an animated film drawn by computer graphics. Source of the graphics is the solution of 146 wave equations that govern the motion of the 292 neutrons and protons in the two nuclei. (Photo: Lawrence Livermore National Laboratory)



Departments

- 259 Science on the Air

Science Service Institution for the public understanding of science founded 1921; a nonprofit corporation.

Board of Trustees — *President*, Glenn T. Seaborg, University of California, Berkeley, CA; *Vice President*, Gerald F. Tape, Associated Universities, Washington, DC; *Treasurer*, Milton Harris, Washington, DC; *Secretary*, Julius Duscha, Washington Journalism Center, Washington, DC; *Joseph W. Berg Jr.*; *Edward Bliss Jr.*; *Bowen C. Dees*; *David A. Goslin*; *Hilleary F. Hoskinson*; *Elizabeth F. Neufeld*; *O. W. Riegel*; *Willis Harlow Shapley*; *H. Guyford Stever*; *John Troan*; *Deborah P. Wolfe*.

Director: E. G. Sherburne Jr.; *Assistant Director*: Dorothy Schriver; *Business Manager*: Donald R. Harless.

bedrock in the heart of Africa's Serengeti Plain; Nov. 14 "On the Edge of Paradise" is a journey through a 300-mile-long archipelago of islands in the Caribbean; Nov. 21 "Forest in the Clouds" is a tour of the inner world of a tropical rain forest; Nov. 28 "Discovery of Animal Behavior, Part 1, Natural Mysteries" examines such activities as locomotion, migration and navigation.

- (PBS) "NOVA": Nov. 2 "Why Do Birds Sing?" (R) examines many aspects of avian communication; Nov. 9 "Here's Looking at You, Kid" is the story of a boy's struggle to recover from severe burns; Nov. 16 "Adventures of Teenage Scientists" introduces winners of this year's Westinghouse Science Talent Search; Nov. 23 "The Cobalt Blues" is an examination of U.S. dependence on foreign sources of strategic minerals vital to the aerospace and steel industries; Nov. 30 "Goodbye, Louisiana" is a report on the water problems of southern Louisiana.

- (PBS) "Odyssey" (R): Nov. 4 "The Kirghiz of Afghanistan" looks at how the Kirghiz were forced to alter their way of life; Nov. 11 "Bath

Waters" follows the excavation of a 2,000-year-old spa; Nov. 18 "Little Injustices: Laura Nader Looks at the Law" is a comparison of the way legal systems in Mexico and the United States settle disputes and consumer complaints; Nov. 25 "Myths and the Moundbuilders" explores the huge Indian-made earthen mounds scattered throughout the central United States.

- (PBS) "Survival Specials": Nov. 17 "Orangutans: Orphans of the Wild" is a close-up look at the orangutan and efforts being made to save the species; Nov. 24 "Killers of the Plains" is a study of big game animals living on the Serengeti Plain.

- (PBS) "Wild America": Nov. 4 "Mountain Monarchs" are the alpine animals, adapted to life in the severe and unpredictable yet fragile high mountain ecosystem; Nov. 11 "Time of the Grizzly" examines the spectrum of our attitudes toward the grizzly; Nov. 18 "At the Crossroads" explores the struggle of wildlife for survival in modern America; Nov. 25 "Bighorn!" observes a band of wild Rocky Mountain bighorn sheep through the seasons.

OCTOBER 23, 1982

259