

SCIENCE NEWS

The Weekly Newsmagazine of Science

A Science Service Publication
Volume 123, No. 4, January 22, 1983

E. G. Sherburne Jr. Publisher
Joel Greenberg Editor
Dietrick E. Thomsen Senior Editor/
Physical Sciences
Judy Klein Assistant Editor
Wray Herbert Behavioral Sciences
Joan Arehart-Treichel Biomedicine
Linda Garmon Chemistry
Cheryl Simon Earth Sciences
Julie Ann Miller Life Sciences
Janet Raloff, Ivars Peterson Policy/Technology
Jonathan Eberhart Space Sciences
Joanne Silberner Assistant to the Editor
Ileana Mendez Art Director
Allan Chen Science Writer Intern
Jane M. Livermore Books
Donald R. Harless Business Manager
Scherago Associates Advertising
Fred Dieffenbach, Sales Director
1515 Broadway, New York, N.Y. 10036

Copyright © 1983 by Science Service, Inc.,
Editorial and Business Offices,
1719 N St., N.W., Washington, D.C. 20036.
Republication of any portion of SCIENCE NEWS
without written permission of the publisher is
prohibited.

Subscription Department
231 West Center Street, Marion, Ohio 43302

Subscription rate: 1 yr., \$27.50; 2 yrs., \$47.50; 3
yrs., \$67.00. (Foreign postage \$5.00 additional per
year.) Change of address: Four to six weeks' notice
is required. Please state exactly how magazine is to
be addressed. Include zip code. For new
subscriptions only call (1) 800-247-2160. Printed in
U.S.A. Second class postage paid at Washington,
D.C. Title registered as trademark U.S. and Canadian
Patent Offices. Published every Saturday by
SCIENCE SERVICE, Inc. 1719 N St., N.W.,
Washington, D.C. 20036. (202-785-2255)
ISSN 0036-8423

Science on the Air

Science News prints the latest written word of scientific development and noteworthy news. We've set this space aside to inform our readers of programs of scientific interest that are scheduled on television and radio. Check your local listings for exact times. (R) indicates a repeat broadcast.

• Feb. 9 (PBS) National Geographic Society — "Australia's Animal Mysteries" features a look at animals that exist, for the most part, nowhere else in the world and at the scientists striving to preserve these links with the continent's earliest history.

Kangaroo and joey: Australian mystery.



Anne B. K. Krumhaar, © NGS 1981

Series

• (PBS) "Life on Earth" (R): Feb. 6 "The Swarming Hordes" looks at the symbiotic relationship between plants and insects; Feb. 13 "Conquest of the Waters" examines some of the 30,000 species of fish that exist; Feb. 20 "Invasion of the Land" studies the ancestors of the amphibians, including the coelacanth, thought until 1938 to be extinct and captured for the first time on film; Feb. 27 "Victors of the Dry Land" explores how iguanas and giant tortoises survive the harsh environment of the Galapagos Islands.

• (PBS) "NOVA": Feb. 1 "The Sea Behind the Dunes" (R) uses underwater photography to present a year in the life of a coastal lagoon; Feb. 8 "Lassa Fever" is a docudrama about a mysterious, highly lethal disease that struck a village in

This Week

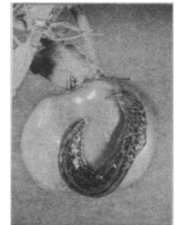
- 52 NASA to Help Listen For E.T.'s Call
- 52 'Severe' effects of natural acidification
- 53 Solar-flare neutrons from sun to earth
- 53 Extra piece of DNA indicted in diabetes
- 53 Strontium sources and filtering fins
- 54 Early hints at a moonish meteorite
- 54 Centers for Disease Control: On the Beach

Research Notes

- 55 Biology
- 55 Environment

Articles

- 58 Soft-Core Learning
Cover: The mechanisms of learning and memory, long obscure, are being brought to light in studies of such primitive invertebrates as *Limax maximus*, the giant garden slug. (Photo by Runk/Schoenberger for Grant Heilman Photography)
- 60 Dioxin in Missouri: Troubled Times



Departments

- 51 Science on the Air
- 63 Books

Science Service Institution for the public understanding of science founded 1921; a nonprofit corporation.

Board of Trustees — President, Glenn T. Seaborg; Vice President, Gerald F. Tape; Treasurer, Milton Harris; Secretary, Julius Duschka; Joseph W. Berg Jr.; Edward Bliss Jr.; Bowen C. Dees; David A. Goslin; Hilleary F. Hoskinson; Elizabeth F. Neufeld; O. W. Riegel; Willis Harlow Shapley; H. Guyford Stever; John Troan; Deborah P. Wolfe.

Director: E. G. Sherburne Jr.; Assistant Director: Dorothy Schriver; Business Manager: Donald R. Harless.



Lenhart Nilsson, Sveriges TV/NOVA

A sperm cell on its way into the uterus.

Nigeria; Feb. 15 "The Miracle of Life" is the first film ever made of the chain of events that turn a sperm and egg into a newborn baby; Feb. 22 "The Dawn With No Tomorrow" looks at the latest generation of nuclear weapons and shows how Americans and Russians view the standoff between the world's superpowers.