

SCIENCE NEWS

The Weekly Newsmagazine of Science

A Science Service Publication
Volume 123, No. 13, March 26, 1983

E. G. Sherburne Jr. Publisher
Joel Greenberg Editor
Dietrick E. Thomsen Senior Editor/
Physical Sciences
Judy Klein Assistant Editor
Wray Herbert Behavioral Sciences
Joan Arehart-Treichel Biomedicine
Linda Garmon Chemistry
Cheryl Simon Earth Sciences
Julie Ann Miller Life Sciences
Janet Raloff,
Ivars Peterson Policy/Technology
Jonathan Eberhart Space Sciences
Joanne Silberner Assistant to the Editor
Ileana Mendez Art Director
Allan Chen Science Writer Intern
Jane M. Livermore Books
Donald R. Harless Business Manager
Scherago Associates Advertising
Fred Dieffenbach, Sales Director
1515 Broadway, New York, N.Y. 10036

Copyright © 1983 by Science Service, Inc.,
Editorial and Business Offices,
1719 N St., N.W., Washington, D.C. 20036.
Republication of any portion of SCIENCE NEWS
without written permission of the publisher is
prohibited.

Subscription Department
231 West Center Street, Marion, Ohio 43302

Subscription rate: 1 yr., \$27.50; 2 yrs., \$47.50; 3
yrs., \$67.00. (Foreign postage \$5.00 additional per
year.) Change of address: Four to six weeks' notice
is required. Please state exactly how magazine is to
be addressed. Include zip code. For new
subscriptions only call (1) 800-247-2160. Printed in
U.S.A. Second class postage paid at Washington,
D.C. Title registered as trademark U.S. and Canadian
Patent Offices. Published every Saturday by
SCIENCE SERVICE, Inc. 1719 N St., N.W.,
Washington, D.C. 20036. (202-785-2255)
ISSN 0036-8423

Science on the Air

Science News prints the latest written word of scientific development and noteworthy news. We've set this space aside to inform our readers of programs of scientific interest that are scheduled on television and radio. Check your local listings for exact times. (R) indicates a repeat broadcast.

• **April 6 (PBS) National Geographic Society — "Born of Fire"** is a documentary focusing on the modern science of plate tectonics. Sites of past and present activity that are visited include California's San Andreas Fault, Japan, a power plant in Iceland that is tapping energy from a volcano and the ruins of a Bronze Age town on the island of Santorini that is suspected of being the lost city of Atlantis.

1973 eruption of Iceland's Eldfell volcano.

Robert S. Patton, © NGS



This Week

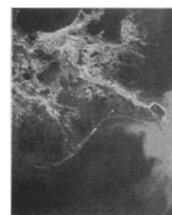
- 196 Moonrock Yes, Marsrocks Maybe
- 196 Treating senility with opiate blockers
- 197 Marijuana and the reproductive cycle
- 197 Immunity syndrome: New test, new ideas
- 197 New EPA chief nominated
- 198 Filling in hazardous waste loopholes
- 198 In California, is more burning better?
- 199 Pandas mate at last but zoo aids nature
- 199 Is DOE ignoring the fusion energy act?
- 199 Chemical key to emphysema found

Research Notes

- 202 Chemistry
- 202 Science & Society
- 203 Technology
- 203 Biomedicine

Articles

- 204 Dammed If They Do and Dammed If They Don't
Cover: A Landsat photo of the Mississippi River delta, taken January 1973. The river deposits sediment, visible as a light haze, at the mouth. New Orleans is at top. Louisiana faces adjustments as the Mississippi's main flow tries to shift to the Atchafalaya tributary in the state's southwest. (Photo courtesy of U.S. Geological Survey)



Departments

- 194 Letters
- 195 Science on the Air
- 207 Books

Science Service Institution for the public understanding of science founded 1921; a nonprofit corporation.
Board of Trustees — *President, Glenn T. Seaborg; Vice President, Gerald F. Tape; Treasurer, Milton Harris; Secretary, Julius Duscha; Joseph W. Berg Jr.; Edward Bliss Jr.; Bowen C. Dees; David A. Goslin; Hilleary F. Hoskinson; Elizabeth F. Neufeld; O.W. Riegel; Willis Harlow Shapley; H. Guyford Stever; John Troan; Deborah P. Wolfe.*
Director: E. G. Sherburne Jr.; Assistant Director: Dorothy Schriver; Business Manager: Donald R. Harless.

Series

• (PBS) **"Cosmos"** (R): **April 17 "The Shores of the Cosmic Ocean"** includes a flight through space with Carl Sagan aboard a simulated, scientifically accurate spaceship of the imagination and a cosmic calendar that compresses 15 billion years into 12 months; **April 24 "One Voice in the Cosmic Fugue"** is a look at life and its origins.
• (PBS) **"NOVA"** (R): **April 5 "Still Waters"** shows a year in the life of a beaver pond; **April 12 "Einstein"** explores aspects of the life and thoughts of Einstein the genius of science and Einstein the humanist and philosopher; **April 19 "The Case of the UFOs"** investigates the fact, fiction and hoax of UFOs; **April 26 "Here's Looking at You, Kid"** is the story of a boy's fight to recover from severe burns.

• (PBS) **"Here's To Your Health": April 9 "Why We're Killing Ourselves"** is a look at what we're doing and how we can prevent it; **April 16 "Heart Attack: The Unrelenting Killer"** explores the facts about heart attacks, the mechanics of heart disease and its causes and effects; **April 23 "Heart Attack: How Can We Prevent It?"** is a discussion of lifestyle changes and a demonstration of cardiopulmonary resuscitation; **April 30 "Nutrition"** looks at the link that exists between certain foods and illness.

• (PBS) **"Life on Earth"** (R): **April 3 "Life in the Trees"** is the story of primates and how they solved the difficulties of arboreal living; **April 10 "The Compulsive Communicator"** focuses on the part communication has played in human development.