

Science on the Air

Science News prints the latest written word of scientific development and noteworthy news. We've set this space aside to inform our readers of programs of scientific interest that are scheduled on television and radio. Check your local listings for exact times. (R) indicates a repeat broadcast.

Dec. 1 (PBS) Nature—“Man’s Best Friend” (R) Examines why people have developed such a close relationship with dogs.

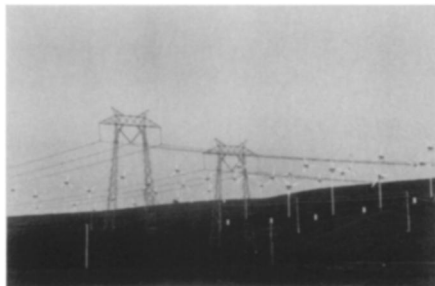
Dec. 2. (PBS) The Brain — “Madness” (R) Compelling portraits of schizophrenics and their families underscore how much brain research has uncovered and what it has yet to accomplish.

Dec. 3 (PBS) Nova — “Animal Architects” Examines the intricate world of nature’s construction industry and presents rare footage of unusual habitats.

Dec. 5 (PBS) Educational Computing — A weekly report on the world of educational computing, targeted to educators and parents. Thursdays.

Dec. 8 (PBS) Nature — “Sexual Encounters of the Floral Kind” (R) A look at the cooperative relationship between plants and insects in the pollination process.

Dec. 9 (PBS) The Brain—“States of Mind” (R) A survey of today’s science of the brain and a look to its future in medicine, in artificial intelligence and in the ultimate frontier of understanding — the mind.



Dec. 9 (PBS) Power Struggle — Examines the problems posed by the United States’ continuing reliance on conventional energy sources and investigates the possibility of solving those problems through broader reliance on renewable energy and conservation.

Dec. 10 (PBS) Nova — “Nomads of the Rain Forest” (R) A look into the isolated community of the Waorani Indians of Ecuador.

Dec. 11 (PBS) Arctic Window (R) The story of the North Atlantic puffin and how a colony of puffins, transported from Iceland, has been established at Chicago’s Lincoln Park Zoo.



Dec. 15 (PBS) Nature—“Kalahari: Wilderness Without Water” A look at how a rich and diverse community of plants and animals has adapted to life in the harsh environment of the Kalahari Desert in South Africa.

Dec. 17 (PBS) Nova — “The Plane that Changed the World” Celebrates the 50th anniversary of the DC-3 — the plane that revolutionized commercial air travel and is called the most important plane ever built.



Dec. 22 (PBS) Nature — “Yellowstone in Winter” (R) A rare look at this popular summertime vacation spot during a season in which few tourists ever see it.

Dec. 24 (PBS) Nova — “Eyes Over China” (R) Details of an experiment using an airplane as a research and exchange station for medical skills from around the world.

Dec. 29 (PBS) Nature—“Through Animal Eyes” (R) Through the use of special video techniques viewers will see how animals and insects see the world.

Dec. 31 (PBS) Nova — “Antarctica: Earth’s Last Frontier” (R) A visit to this wilderness of ice, larger than the United States and Mexico combined, where warm-blooded residents include seals, penguins and scientists.

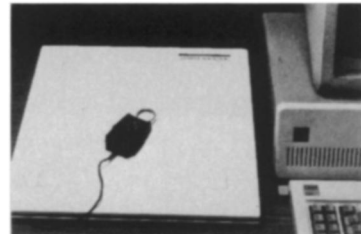
Children’s Programs

Dec. 1 (PBS) OWL/TV — A weekly series designed to enhance children’s knowledge and enjoyment of the world around them. Fridays.

Dec. 2 (PBS) 3-2-1 Contact — A half-hour program on science and technology for 8- to 12-year-olds. Monday-Friday.

Dec. 7 (PBS) Newton’s Apple — A fun, fast-paced weekly science series that answers viewers’ questions with in-studio and on-location demonstrations. Saturdays.

AUTOMATE ^{NEW} MEASUREMENT ON YOUR IBM PC



New digitizing tablet with Sigma-Scan™ measurement software. \$1195

Cat #3011 — 12" x 12" system

Resolution of .025 mm, accuracy of at least .25 mm. Comes with state-of-the-art software for area, linear, perimeter, length of curvy line, and angular measurements. X, Y point or stream digitizing. Descriptive statistics. Transfer data to other programs in standard ASCII or DIF format.

This and other new Microcomputer Tools for the Scientist. Call or write today for FREE catalog.

JANDEL SCIENTIFIC

2656 Bridgeway, Sausalito, CA 94965

800-874-1888

(In Calif. call 415-331-3022)