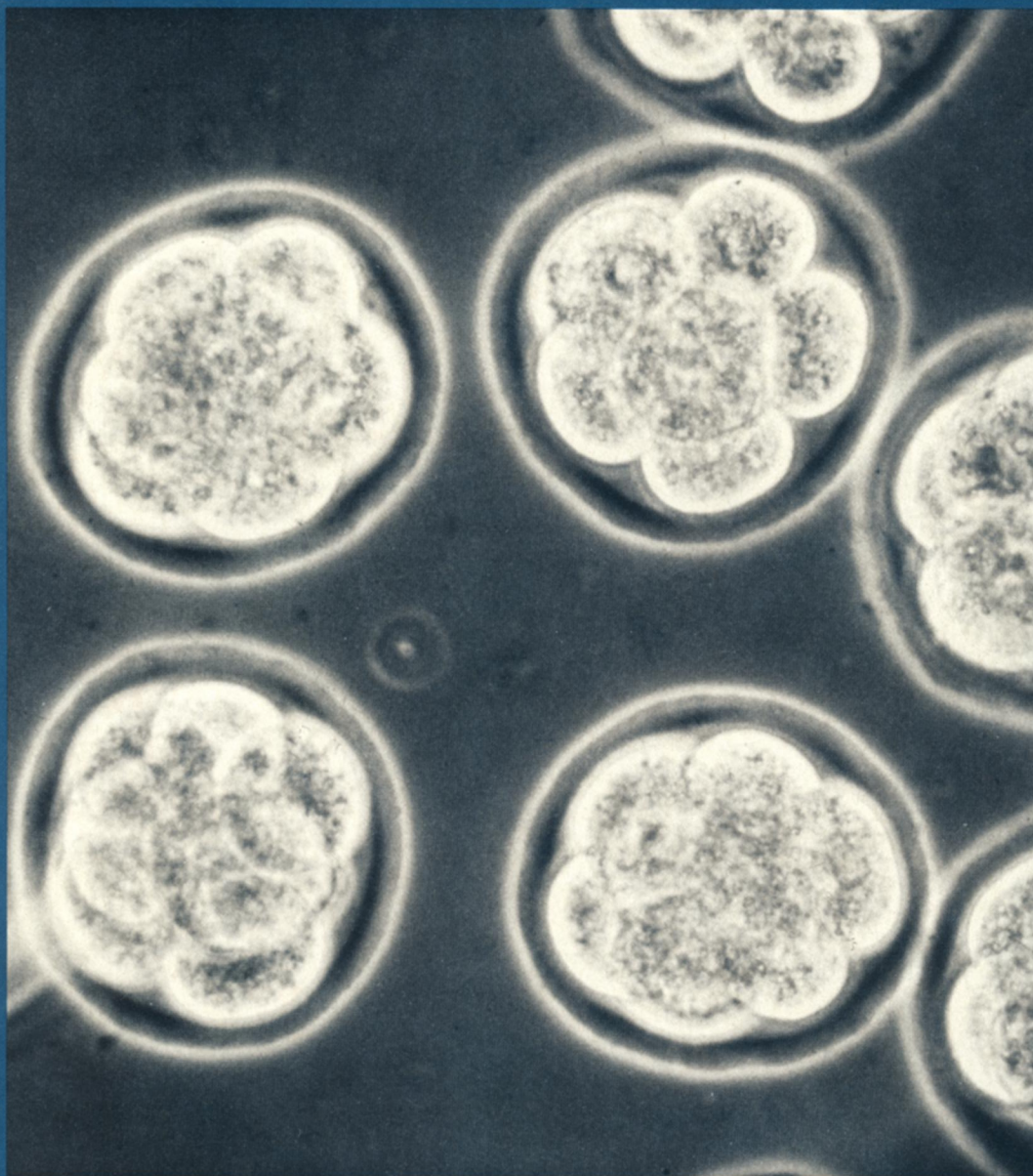


The Weekly Newsmagazine of Science

SCIENCE NEWS

August 29, 1987
Vol. 132, No. 9
Pages 129-144



The Big Chill Without Ice

science and mathematics teachers



encourage your students to enter the



WESTINGHOUSE SCIENCE TALENT SEARCH

PHYSICS
CHEMISTRY
BIOLOGY
MATHEMATICS
ASTRONOMY
GEOLOGY
HUMAN ENGINEERING
PSYCHOLOGY
ANTHROPOLOGY
METEOROLOGY
ZOOLOGY
SOCIOLOGY
ARCHITECTURE
BIOCHEMISTRY
GEOMETRY
SOCIAL PSYCHOLOGY
ELECTRICAL ENGINEERING
MOLECULAR BIOLOGY
ECOLOGY
PERCEPTION
CALCULUS
ARCHAEOLOGY
CIVIL ENGINEERING
SOCIAL ANTHROPOLOGY
MOLECULAR GENETICS
GEOCHEMISTRY
SOLID STATE PHYSICS
OPTICS
TRANSPORTATION
LIMNOLOGY
EDUCATIONAL PSYCHOLOGY
ABSTRACT ALGEBRA
CELLULAR BIOLOGY
BOTANY
THERMODYNAMICS
AERONAUTICAL ENGINEERING
BACTERIOLOGY
ECONOMICS
OCEANOGRAPHY
ENVIRONMENTAL SCIENCE
PLANT PHYSIOLOGY

- **40 Winners will share \$140,000 in Westinghouse Science Scholarships and Awards.**
- **300 Honorable Mentions will be brought to the attention of all colleges, universities and technical schools in the U.S.A.**
- **Hundreds of students automatically will receive recommendations and other assistance toward a college education in schools within states holding State Science Talent Searches.**
- **For all students, a sense of accomplishment and a measure of self-evaluation that comes from finishing a hard assignment.**

ABOUT THE SCIENCE TALENT SEARCH

More than 13,800 students have been members of the Winners and Honors Groups in the past 46 years. Because of their standing in this oldest and most prestigious competition of its kind, they have been offered scholarships from institutions seeking quality students with proven ability in science and engineering. Many winners in the Science Talent Search are offered summer employment in scientific laboratories and other tokens of early acceptance into the world of science and engineering. Such benefits also come frequently to members of the Honors Group and to those who place in State Science Talent Searches.

ANSWERING YOUR QUESTIONS

Who May Compete? Any boy or girl who is in the last year of secondary school (public, private, parochial) who is expected by the certifying school official to complete college entrance qualifications before October 1, 1988 and who has not competed in any previous Science Talent Search is eligible to enter this competition.

How Can Students Compete? Teachers or other school officials must request entry materials for the outstanding science and mathematics students of the school.

What Is A Completed Entry? A project report of about 1,000 words which presents evidence of research ability in science, mathematics or engineering; a Personal Data Blank filled in by student, teachers and principal; standardized test scores and high school transcript.

How Are Entries Judged? Judging is based primarily on the student's report on an independent research project in the physical sciences, behavioral and social sciences, engineering, mathematics, or biological sciences (excluding live vertebrate experimentation).

What Is The Deadline? Entries must be received at Science Service no later than Midnight, December 15, 1987

Get your students to start working on projects NOW

RURAL SOCIOLOGY
PARASITOLOGY
PALEONTOLOGY
MINERALOGY
COMPUTERS
SOIL MECHANICS
POLITICAL SCIENCE
CULTURAL ANTHROPOLOGY
MATHEMATICAL BIOLOGY
ASTROPHYSICS
GENETICS
GEOPHYSICS
NUMBER THEORY
MECHANICAL ENGINEERING
BIOMEDICAL ELECTRONICS
AERODYNAMICS
URBAN SOCIOLOGY
PROTOZOOLOGY
ETHOLOGY
TOPOLOGY
QUANTUM MECHANICS
METALLURGY
INDUSTRIAL PSYCHOLOGY
STATISTICS
MICROBIOLOGY
LOGIC
BIOMETRY
CELLULAR CHEMISTRY
CELL PHYSIOLOGY
BIOPHYSICAL CHEMISTRY
BIOENERGETICS
INVERTEBRATE NEUROPHYSIOLOGY
CHEMICAL ENGINEERING
SYSTEMATIC BIOLOGY
COMPLEX ANALYSIS
PETROLOGY
BIOCHEMICAL ENGINEERING
FLUID MECHANICS
ELECTRONICS
PROBABILITY
NUCLEAR ENERGY

send for information from **SCIENCE SERVICE**
1719 N Street, N.W., Washington, D.C. 20036