



SCIENCE NEWS-LETTER

The Weekly Summary of Current Science

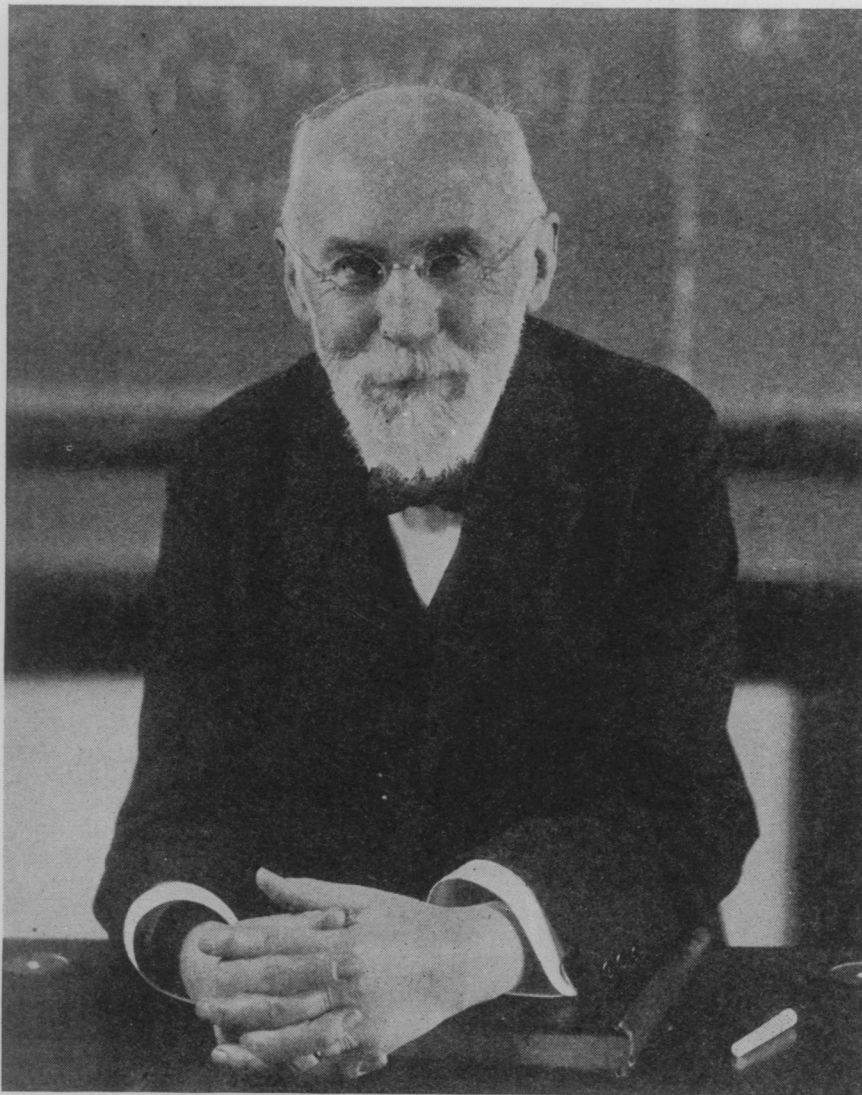
A SCIENCE SERVICE PUBLICATION



\$5 a year 15c a copy



March 10, 1928



WORLD INTELLECTUAL LEADER

Hendrik Antoon Lorentz, 1853-1928

(See page 146)

Vol. XIII

No. 361

Now Ready—

For all Bird Lovers and Nature Students

“An Outline of Bird Study”

By

C. BLAIR COURSEN

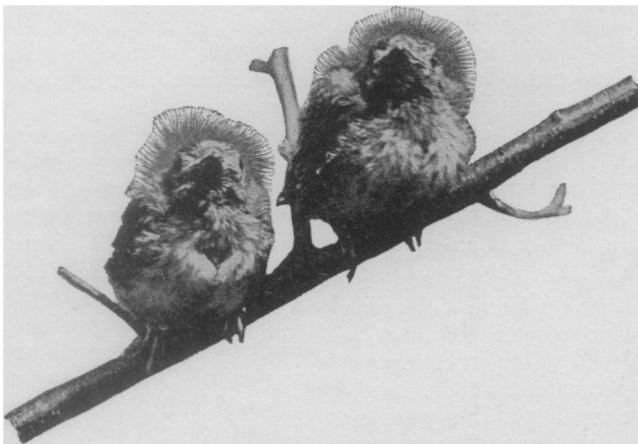


This booklet has been written especially for the beginning bird student. It will be of practical help to the teacher and student alike. Contains sections on Field Methods, Bird Photography, Birds in the Field, Class-room Activities, Methods of Attracting Birds, etc., etc.

Illustrated by many original photographs and drawings. Forty-eight pages and cover of heavy green art-paper.

Per copy, postpaid.....\$ 1.00
Per dozen copies.....\$10.00

Special low prices to classes of 25 or more students.



Order from

General Biological Supply House

(Incorporated)

761-763 East Sixty-ninth Place

Chicago

Illinois

Do You Know That—

Trout fishing is often improved by the presence of beavers in the streams.

A bridge is being built over the Iraho River at the great height of 490 feet.

The mountain pine beetle is waging active warfare against western pine forests.

The Egyptians made mummies of a variety of sacred animals, and even insects.

Suicides in the United States are more numerous than deaths from railroad accidents.

An attempt is being made to introduce California birds and fish into the Hawaiian Islands.

Forests of the United States yield more than 100 different kinds of wood for commercial purposes.

A tomato-like plant which is used in treating diabetes in Siam will be tested by the University of California.

The king of the Bahima tribe, in East Africa, reckons his greatness entirely by the number of cattle he possesses.

Staff of Science Service—Director, Edwin E. Slosson; Managing Editor, Watson Davis; Staff Writers, Frank Thone, James Stokley, Emily O. Davis, Marjorie MacDill; Sales and Advertising Manager, Hallie Jenkins.

Board of Trustees of Science Service—Representing the American Association for the Advancement of Science, J. McKeen Cattell, *Treasurer*, Editor, *Science*, Garrison, N. Y.; D. T. MacDougal, Director, Desert Laboratory, Tucson, Ariz.; M. I. Pupin, Professor of Electromechanics, Columbia University, New York City. Representing the National Academy of Sciences, John C. Merriam, President, Carnegie Institution of Washington; R. A. Millikan, Director, Norman Bridge Laboratory of Physics, California Institute of Technology, Pasadena, Calif.; Dr. David White, Chairman of the Division of Geology and Geography, National Research Council. Representing National Research Council, Vernon Kellogg, *Vice-President and Chairman of Executive Committee*, Permanent Secretary, National Research Council, Washington, D. C.; C. G. Abbot, Secretary, Smithsonian Institution, Washington, D. C.; Victor C. Vaughan, Professor Emeritus of Hygiene, University of Michigan. Representing Journalistic Profession, John H. Finley, Associate Editor, *New York Times*; Mark Sullivan, Writer, Washington, D. C.; Marlen E. Pew, Editor of Editor and Publisher, *New York City*. Representing E. W. Scripps Estate, W. E. Ritter, *President*, University of California; Robert P. Scripps, Scripps-Howard Newspapers, West Chester, Ohio; Thomas L. Sidlo, Cleveland, Ohio.

How to Use Index Word Feature

Classification

In order to aid in catching the items that concern you and to facilitate clipping and filing, a key-word in italics is printed under the heading of each article. The key words used fit into any system of classification, whether it be a straight alphabetical file, a system of your own devising, the Library of Congress classification or the Dewey system.

Note that you can clip out any article without fear of damaging another original article in which you might be interested, since editorial matter printed on the right-hand pages is backed by advertising, standing matter, a continuation of the article on the other side, or reprinted quotations.

Library of Congress Classification

The classification of the Library of Congress has come into common use in the libraries of the country owing to the publication by the Government of the card index of all new books. We print below a list of the subject titles which are most used in the SCIENCE NEWS-LETTER. The full scheme of classification is contained in "Outline Scheme of Classes," issued by the Library of Congress.

| | |
|----|--|
| A | General Works. Polygraphy. |
| B | Philosophy. |
| BF | Psychology. |
| G | Geography, voyages, travel. |
| GA | Mathematical and astronomical geography. |
| GB | Physical geography. |
| GC | Oceanology and oceanography. |
| GF | Anthropogeography. |
| GN | Anthropology. Somatology. Ethnology. Ethnography. Prehistoric archaeology. |
| GR | Folklore. |
| GT | Manners and customs. |
| GV | Sports and amusements. Games. |
| HC | Economic history and conditions. National production. |
| HD | Economic history. Agriculture and Industries. |
| HE | Transportation and communication. |
| HF | Commerce. |
| HM | Sociology. General. |
| HQ | Family. Marriage. Woman. |
| HV | Social pathology. |
| L | Education. |
| M | Music. |
| N | Fine arts. |
| P | Philology and linguistics. |
| Q | Science. General. |
| QA | Mathematics. |
| QB | Astronomy. |
| QC | Physics. |
| QD | Chemistry. |
| QE | Geology. |
| QH | Natural history. |
| QK | Botany. |
| QL | Zoology. |
| QM | Human anatomy. |
| QP | Physiology. |
| QR | Bacteriology. |
| R | Medicine. General. |
| S | Agriculture. General. |

| | |
|----|---|
| SB | Field crops. Horticulture. Landscape gardening. Pests and plant diseases. |
| SD | Forestry. |
| SF | Animal culture. Veterinary medicine. |
| SH | Fish culture and fisheries. |
| SK | Hunting. Game protection. |
| T | Technology. General. |
| TA | Engineering. General. |
| TC | Hydraulic engineering. |
| TD | Sanitary and municipal engineering. |
| TE | Roads and pavements. |
| TF | Railroads. |
| TG | Bridges and roofs. |
| TH | Building construction. |
| TJ | Mechanical engineering. |
| TK | Electrical engineering and industries. |
| TL | Motor vehicles. Cycles. Aeronautics. |
| TN | Mineral industries. Mining and Metallurgy. |
| TP | Chemical technology. |
| TR | Photography. |
| TS | Manufactures. |
| TT | Trades. |
| TX | Domestic science. |
| U | Military science. General. |
| V | Naval science. General. |

Dewey Classification

The main divisions of the Dewey Decimal Classification, used in many libraries and by many individuals, is given below for the convenience of those who wish to use this system:

| | |
|-----|--------------------------------|
| 000 | GENERAL WORKS— |
| 010 | Bibliography |
| 020 | Library economy |
| 030 | General encyclopedias |
| 040 | General collected essays |
| 050 | General periodicals |
| 060 | General societies |
| 070 | Newspapers |
| 080 | Special libraries. Polygraphy |
| 090 | Book rarities |
| 100 | PHILOSOPHY— |
| 110 | Metaphysics |
| 120 | Special metaphysical topics |
| 130 | Mind and body |
| 140 | Philosophical systems |
| 150 | Mental faculties. Psychology |
| 160 | Logic |
| 170 | Ethics |
| 180 | Ancient philosophers |
| 190 | Modern philosophers |
| 200 | RELIGION— |
| 210 | Natural theology |
| 220 | Bible |
| 230 | Doctrinal. Dogmatics. Theology |
| 240 | Devotional. Practical |
| 250 | Homiletic. Pastoral. Parochial |
| 260 | Church. Institutions. Work |
| 270 | Religious history |
| 280 | Christian churches and sects |
| 290 | Ethnic. Non-Christian |
| 300 | SOCIOLOGY— |
| 310 | Statistics |
| 320 | Political science |
| 330 | Political economy |
| 340 | Law |
| 350 | Administration |
| 360 | Associations. Institutions |
| 370 | Education |
| 380 | Commerce. Communication |
| 390 | Customs. Costumes. Folklore |
| 400 | PHILOLOGY— |
| 410 | Comparative |
| 420 | English |
| 430 | German |
| 440 | French |

| | |
|-----|-----------------------------|
| 450 | Italian |
| 460 | Spanish |
| 470 | Latin |
| 480 | Greek |
| 490 | Minor Languages |
| 500 | NATURAL SCIENCE— |
| 510 | Mathematics |
| 520 | Astronomy |
| 530 | Physics |
| 540 | Chemistry |
| 550 | Geology |
| 560 | Paleontology |
| 570 | Biology |
| 580 | Botany |
| 590 | Zoology |
| 600 | USEFUL ARTS— |
| 610 | Medicine |
| 620 | Engineering |
| 630 | Agriculture |
| 640 | Domestic economy |
| 650 | Communication. Commerce |
| 660 | Chemical technology |
| 670 | Manufactures |
| 680 | Mechanic trades |
| 690 | Building |
| 700 | FINE ARTS— |
| 710 | Landscape gardening |
| 720 | Architecture |
| 730 | Sculpture |
| 740 | Drawing. Decoration. Design |
| 750 | Painting |
| 760 | Engraving |
| 770 | Photography |
| 780 | Music |
| 790 | Amusement |
| 800 | LITERATURE— |
| 810 | American |
| 820 | English |
| 830 | German |
| 840 | French |
| 850 | Italian |
| 860 | Spanish |
| 870 | Latin |
| 880 | Greek |
| 890 | Minor languages |
| 900 | HISTORY— |
| 910 | Geography and travels |
| 920 | Biography |
| 930 | Ancient history |
| | Modern |
| 940 | Europe |
| 950 | Asia |
| 960 | Africa |
| 970 | North America |
| 980 | South America |
| 990 | Oceania and polar regions |

About Buying Books—

We know how much trouble it sometimes is to get the book that you want.

So if you want to add to your library any book reviewed or noted in the SCIENCE NEWS-LETTER, or any book in print—just remit to us the publisher's price and we shall rush the book to you postage prepaid.

Don't hesitate to consult with us on your book problems.

SCIENCE SERVICE
21st and B Sts.
Washington, D. C.