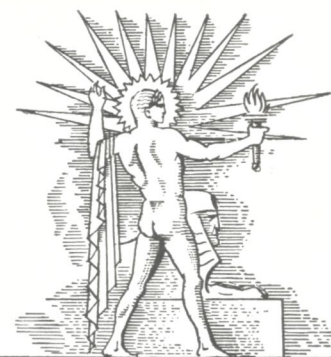
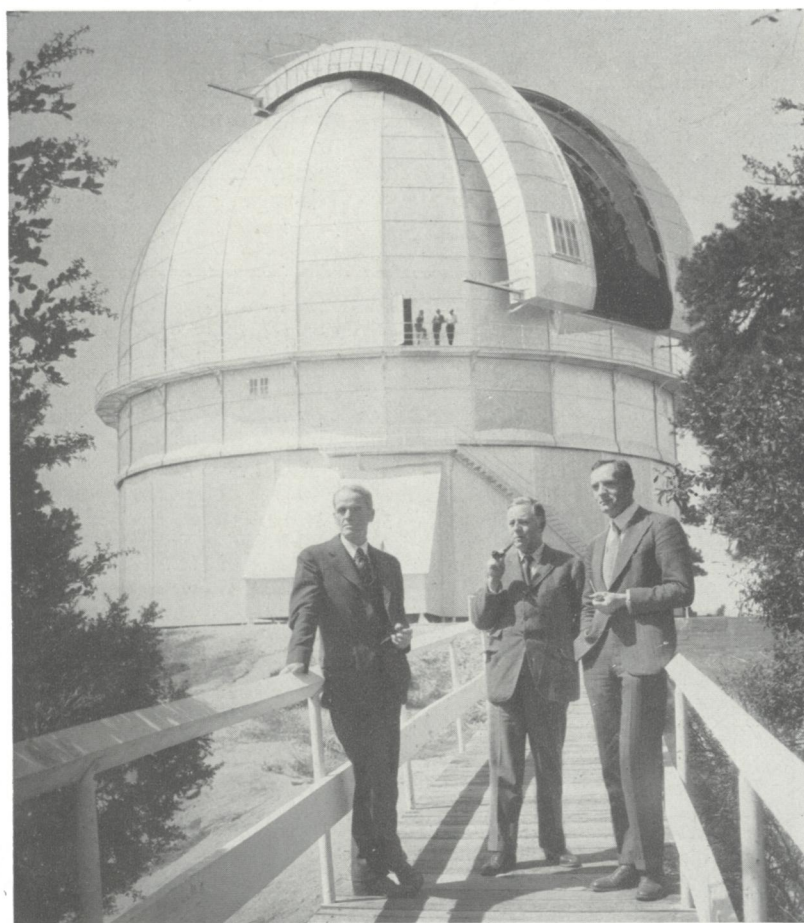


PRICE  
15¢

# SCIENCE NEWS LETTER

THE WEEKLY SUMMARY OF CURRENT SCIENCE ●



MAY 30, 1931

Searchers of the Sky

See Page 339

A

SCIENCE SERVICE PUBLICATION

# SCIENCE NEWS LETTER

VOL. XIX

No. 529

The Weekly  
Summary of  Current  
Science

Published by

## SCIENCE SERVICE

The Institution for the Popularization of Science organized under the auspices of the National Academy of Sciences, the National Research Council and the American Association for the Advancement of Science.

Edited by WATSON DAVIS

Subscription rates—\$5.00 a year postpaid. 15 cents a copy. Ten or more copies to same address, 5 cents a copy. Special reduced subscription rates are available to members of the American Association for the Advancement of Science.

In requesting change of address, please give old as well as new address.

Advertising rates furnished on application.

### Board of Trustees of Science Service

*Honorary President*, William E. Ritter, University of California. Representing the American Association for the Advancement of Science. *J. McKeen Cattell*, *President*, Editor, Science, Garrison, N. Y.; *Burton E. Livingston*, Johns Hopkins University, Baltimore, Md.; *Raymond Pearl*, Director, Institute for Biological Research, Johns Hopkins University, Baltimore, Md. Representing the National Academy of Sciences, *John C. Merriam*, President, Carnegie Institution of Washington; *R. A. Millikan*, Director, Norman Bridge Laboratory of Physics, California Institute of Technology, Pasadena, California; *David White*, Senior Geologist, U. S. Geological Survey. Representing National Research Council, *Vernon Kellogg*, Permanent Secretary, National Research Council, Washington, D. C.; *C. G. Abbot*, Secretary, Smithsonian Institution, Washington, D. C.; *Harrison E. Howe*, Editor of Industrial and Engineering Chemistry. Representing Journalistic Profession, *John H. Finley*, Associate Editor, New York Times; *Mark Sullivan*, Writer, Washington, D. C.; *Marlen E. Pew*, *Vice-President and Chairman of Executive Committee*, Editor of Editor and Publisher, New York City. Representing *E. W. Scripps Estate*, *Harry L. Smithton*, *Treasurer*, Cincinnati, Ohio; *Robert P. Scripps*, Scripps-Howard Newspapers, West Chester, Ohio; *Thomas L. Sidlo*, Cleveland, Ohio.

### Staff of Science Service

Managing Editor, Watson Davis; Staff writers: Frank Thone, Emily C. Davis, Jane Stafford, Marjorie Van de Water, J. W. Young, Elizabeth Spence, D. Lindsay Watson; Librarian, Minna Gill; Sales and Advertising Manager, Hallie Jenkins.

Copyright, 1931, by Science Service, Inc. Reproduction of any portion of the SCIENCE NEWS LETTER is strictly prohibited since it is distributed for personal, school, club or library use only. Newspapers, magazines and other publications are invited to avail themselves of the numerous syndicate services issued by Science Service, details and samples of which will gladly be sent on request.

Publication Office, 1930 Clifton Ave., Baltimore, Md. Editorial and Executive Office, Constitution Ave. at 21st St., N. W., Washington, D. C.

Address all communications to Washington, D. C. Cable address: Scienserv, Washington.

Entered as second class matter October 1, 1926, at the postoffice at Baltimore, Md., under the act of March 3, 1879. Established in mimeographed form March 13, 1922. Title registered as trade-mark, U. S. Patent Office.

## DO YOU KNOW THAT

A case of skin poisoning traced to the handling of chrysanthemum leaves is pronounced the first of the sort in medical literature.

North America's coldest region in winter is between Hudson Bay and Alaska.

Cubs of the American black bear are very tiny at birth, weighing less than a pound each.

A French candy company, wishing to combat race suicide, established a model village to encourage large, healthy families, and has so far evicted seven families because sufficient children were not forthcoming.

The name Canada is from the Huron Indian word for village.

In a black bass "family" the male prepares the nest and later stands guard over the eggs.

Tests of 150 gasoline "dopes" by the U. S. Bureau of Standards showed that all were ineffective.

Dishes and glasses that are designed to be spill-proof have been displayed, for use in serving passengers on airplanes.

Experiments at Cornell University show that clothes moths lay eggs during any month of the year, and the eggs will hatch in any month.

Archaeologists digging at Sakkhara found a life-sized statue of an Egyptian king surrounded by a stone cabinet through which two holes were pierced at eye level, so that the king might look out.

Residents of Kansas object to the name "cyclone state" because the state really ranks seventh in annual wind damage and few Kansans have ever seen a cyclone.

## WITH THE SCIENCES THIS WEEK

<b>ARCHAEOLOGY</b>		<b>GENERAL SCIENCE</b>	
Arabian Nights City Visited	344	First Glances at New Books	352
A Saint's Cup Auctioned	343	<b>GENETICS</b>	
Human-Headed Lions	346	Longevity Inherited	351
Indians of 2000 B. C.	339	<b>GEOLOGY</b>	
<b>ASTRONOMY</b>		History of a Lake	344
Comet to Make Record	345	<b>MEDICINE</b>	
Eagle and Swan Seen in Sky	341	Meningitis Treatment	344
Greatest Double Star Measured	344	Secret of Nervousness	340
Life Rare	339	<b>METEOROLOGY</b>	
<b>ASTROPHYSICS</b>		Remarkable Mirage	344
Fire Hinders Research	345	Few British Fogs	348
<b>BACTERIOLOGY</b>		<b>NUTRITION</b>	
Bees Harbor Blight	345	Coconut Milk for Babies	351
<b>BIOLOGY</b>		<b>ORNITHOLOGY</b>	
Put Yeast to Sleep	340	Bird Life of Florida	350
<b>ENGINEERING</b>		<b>PHYSICS</b>	
Flexible Railroad Tie	344	Electron Not Dependable	348
Makes Coal Handling Easier	345	Quantum Theory Yields Facts	349
<b>BOTANY</b>		Seen Through Iron	348
May-Apple	350	<b>PHYSIOLOGY</b>	
<b>ENTOMOLOGY</b>		Sunlight Aids Nutrition	345
"Fifty-Fifty" Mosquito	351	<b>PSYCHOLOGY</b>	
		Measure Effect of Movies	343

Science Service presents over the radio, an address

### HOW SCIENCE STUDIES THE CHILD

By Dr. Arnold Gesell, director of the Clinic of Child Development of Yale University, who has pioneered in the field of testing the mental growth of infants

Friday, June 5, at 2:45 P. M., Eastern Standard Time

Over Stations of

The Columbia Broadcasting System