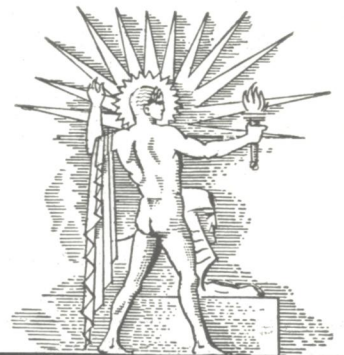
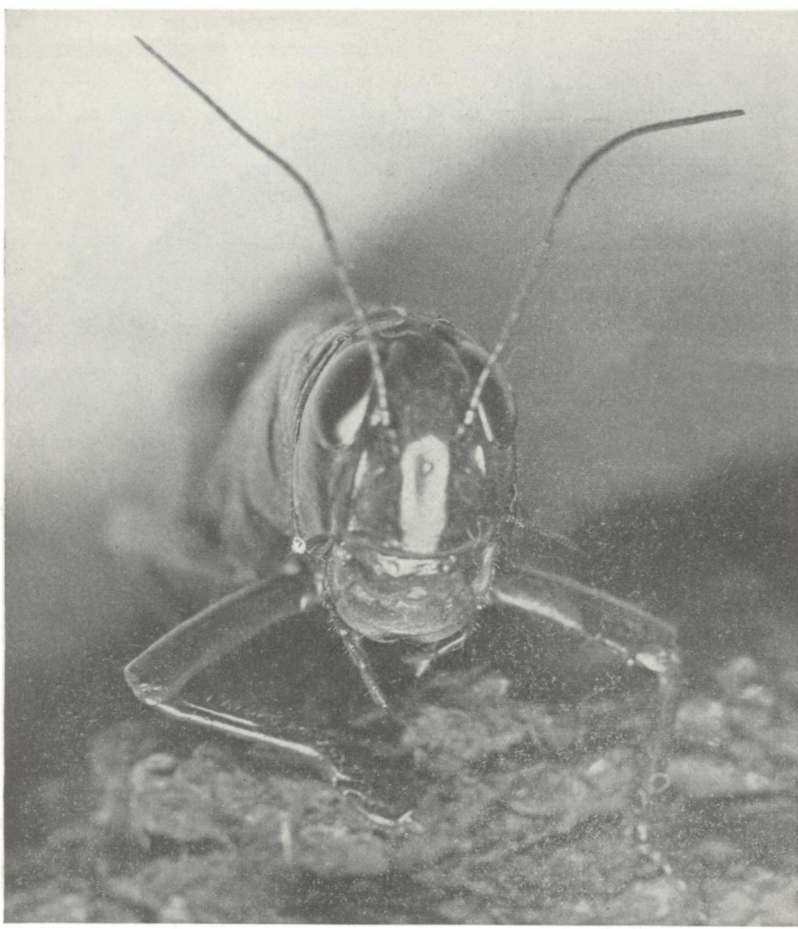


PRICE
15¢

SCIENCE NEWS LETTER

THE WEEKLY SUMMARY OF CURRENT SCIENCE •



JULY 11, 1931

Hatched by Heat to Invade Northwest

See Page 19

A

SCIENCE SERVICE PUBLICATION

SCIENCE NEWS LETTER

VOL. XX

No. 535

The Weekly
Summary of  Current
Science

Published by

SCIENCE SERVICE

The Institution for the Popularization of Science organized under the auspices of the National Academy of Sciences, the National Research Council and the American Association for the Advancement of Science.

Edited by WATSON DAVIS

Subscription rates—\$5.00 a year postpaid. 15 cents a copy. Ten or more copies to same address, 5 cents a copy. Special reduced subscription rates are available to members of the American Association for the Advancement of Science.

In requesting change of address, please give old as well as new address.

Advertising rates furnished on application.

Board of Trustees of Science Service

Honorary President, William E. Ritter, University of California. Representing the American Association for the Advancement of Science. *J. McKeen Cattell*, *President*, Editor, Science, Garrison, N. Y.; *Burton E. Livingston*, Johns Hopkins University, Baltimore, Md.; *Raymond Pearl*, Director, Institute for Biological Research, Johns Hopkins University, Baltimore, Md. Representing the National Academy of Sciences, *W. H. Howell*, *Vice-President and Chairman of Executive Committee*, National Research Council, Washington, D. C.; *R. A. Millikan*, Director, Norman Bridge Laboratory of Physics, California Institute of Technology, Pasadena, Calif.; *David White*, Senior Geologist, U. S. Geological Survey, Representing National Research Council, *Vernon Kellogg*, Permanent Secretary, National Research Council, Washington, D. C.; *C. G. Abbot*, Secretary, Smithsonian Institution, Washington, D. C.; *Harrison E. Howe*, Editor of Industrial and Engineering Chemistry. Representing Journalistic Profession, *John H. Finley*, Associate Editor, New York Times; *Mark Sullivan*, Writer, Washington, D. C.; *Marlen E. Pew*, Editor of Editor and Publisher, New York City. Representing E. W. Scripps Estate, *Harry L. Smithton*, *Treasurer*, Cincinnati, Ohio; *Robert P. Scripps*, Scripps-Howard Newspapers, West Chester, Ohio; *Thomas L. Sidlo*, Cleveland, Ohio.

Staff of Science Service

Managing Editor, Watson Davis; *Staff writers*: Frank Thone, Emily C. Davis, Jane Stafford, Marjorie Van de Water, J. W. Young, D. Lindsay Watson; *Librarian*, Minna Gill; *Sales and Advertising Manager*, Hallie Jenkins.

Copyright, 1931, by Science Service, Inc. Reproduction of any portion of the SCIENCE NEWS LETTER is strictly prohibited since it is distributed for personal, school, club or library use only. Newspapers, magazines and other publications are invited to avail themselves of the numerous syndicate services issued by Science Service, details and samples of which will gladly be sent on request.

Publication Office, 1930 Clifton Ave., Baltimore, Md. Editorial and Executive Office, Constitution Ave. at 21st St., N. W., Washington, D. C.

Address all communications to Washington, D. C. Cable address: Scienserv, Washington.

Entered as second class matter October 1, 1926, at the post-office at Baltimore, Md., under the act of March 3, 1879. Established in mimeographed form March 13, 1922. Title registered as trade-mark, U. S. Patent Office.

DO YOU KNOW THAT

Vegetable oils are said to be a good fuel for some Diesel engines.

Wheat, rye, and whole wheat bread are combined in one loaf devised by a Northwestern baker.

The National Geographic Society has presented the U. S. National Museum with more than 1,000 bird skins collected in Venezuela.

Weather men call people who are affected to an abnormal degree by weather "meteoropaths."

Eight railroad companies operating in Missouri have converted their rights-of-way into homes for wild birds and animals.

Deer appear inclined to eat all kinds of available vegetable food and will try anything new, according to Pennsylvania foresters.

Hummingbirds prefer red to any other color in flowers.

Sponges are now being made artificially from cellulose.

One-tenth of the harvested hay crop in the United States is lost each year through spontaneous combustion.

An economist reports that, allowing five people to a family, railroads of the United States directly support almost eight million people.

The State of Para, Brazil, in the Amazon Valley, has more than 1,000 kinds of trees, says Dr. B. E. Dahlgren, botanist of the Field Museum.

A patent exposition, at which inventors will display their ideas for prospective buyers, will be held in Chicago this autumn.

WITH THE SCIENCES THIS WEEK

ANTHROPOLOGY		ICHTHYOLOGY	
"Giant" Skeletons Only Ordinary	31	Trout Prefer Home	28
"Healthy" Savage" Myth Hit	30	MEDICINE	
Seek "Black Sand" Indians	25	Alcoholism May Partly Cause Pel-	
ARCHAEOLOGY		lagra	31
X-Ray Mummies' Interior for Study	29	Cancer Treatment Value Doubted	23
ASTRONOMY		Female Gland Extract Checks Men's	
Super-Giant Variable Star Found	20	Bleeding	19
BOTANY		ORNITHOLOGY	
Discover 1000-Year-Old Pine	25	Trumpeters Again in Yellowstone	29
Good to Eat—and Safe	20	PALEONTOLOGY	
CHEMISTRY		Mastodon Remains in Turkey	21
Cheaper Hydrogen Promised	25	PHYSICS	
Some Elements Yielded by Yttrium		X-Ray Mummies' Interior for Study	29
—"A Classic of Science"	22	PLANT PHYSIOLOGY	
ENGINEERING		Frame Duplicates Wind-Blown	
Chickens Heated by Electricity	28	Trees	24
Copper Strengthens Auto Valves	20	PSYCHOLOGY	
New Electrical Transmission System	21	"Bright" Child Has Hard Time	24
ENTOMOLOGY		Children More Alert Than Teachers	30
Cricket Chirps Tell Temperature	24	Smaller Families Just as Bright	25
Garden Spiders—"Nature Ram-		Tired Children Apt to be Hurt	25
blings"	31	SEISMOLOGY	
Grasshoppers Invade Northwest	19	Device Measures Force of Quake	24
EVOLUTION		ZOOLOGY	
The Dog's Family Tree	26	Drinking Troughs Preserve Ele-	
GENERAL SCIENCE		phants	23
Book Reviews	32	White Rhinoceros Carefully Guarded	24
Scientist as Salesman	29		

Science Service presents over the radio, an address

SEA BEACHES AND THE TIDE

By Captain Paul C. Whitney, chief, Division of Tides and Currents, U. S. Coast and Geodetic Survey, who will give information of special interest to those who spend their vacation by the sea.

Friday, July 17, at 2:45 P. M., Eastern Standard Time

Over Stations of

The Columbia Broadcasting System