

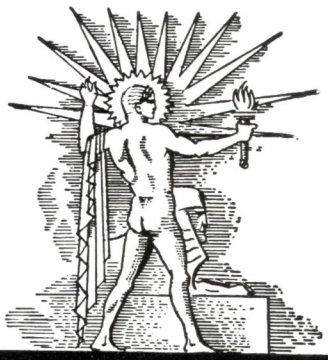
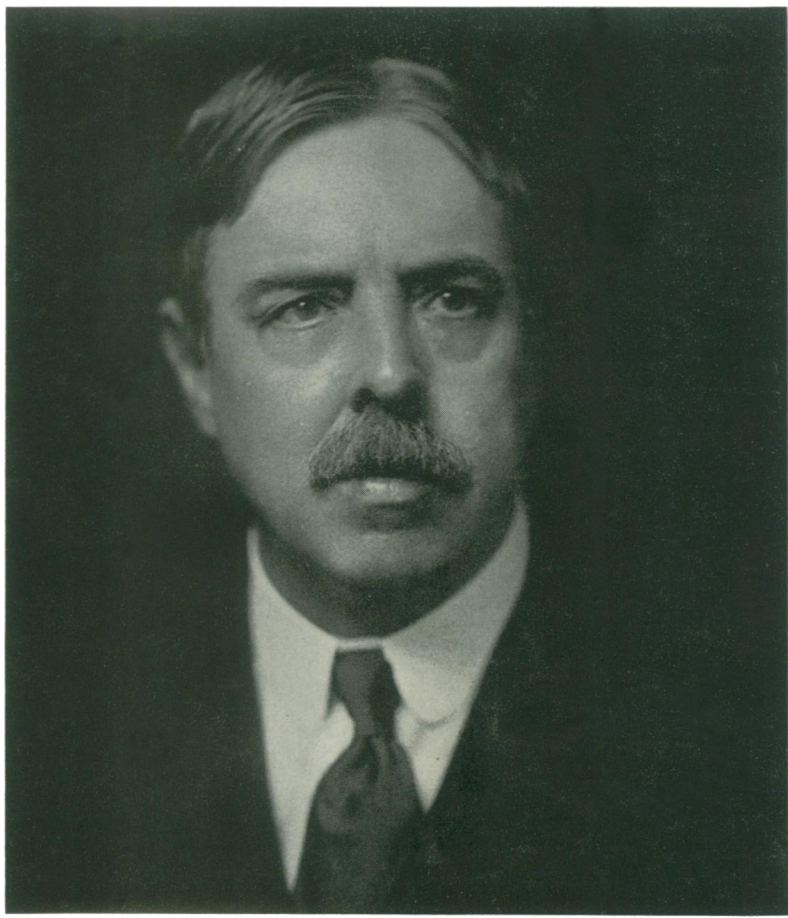
PRICE
15¢



SCIENCE NEWS LETTER



THE WEEKLY SUMMARY OF CURRENT SCIENCE •



JANUARY 6, 1934

New President of A.A.A.S.
See Page 6

A SCIENCE SERVICE PUBLICATION



SCIENCE NEWS LETTER

VOL. XXV

No. 665

The Weekly  Current
Summary of Science

Published by

SCIENCE SERVICE

The Institution for the Popularization of Science organized under the auspices of the National Academy of Sciences, the National Research Council and the American Association for the Advancement of Science.

Edited by WATSON DAVIS

Subscription rates—\$5.00 a year postpaid; two years \$7.00; 15 cents a copy. Ten or more copies to same address, 5 cents a copy. Back numbers more than six months old, 25 cents.

Canadian and foreign subscribers please add two dollars (\$2.00) per year to regular subscription rates to cover postage.

In requesting change of address, please give your old address as well as the new one in notification to Circulation Department, SCIENCE NEWS LETTER, 21st and Constitution Ave., Washington, D. C., at least two weeks before change is to become effective.

Advertising rates furnished on application.

Board of Trustees of Science Service

Honorary President, William E. Ritter, University of California. Representing the American Association for the Advancement of Science, J. McKeen Cattell, *President*, Editor, Science, Garrison, N. Y.; Burton E. Livingston, Johns Hopkins University, Baltimore, Md.; Raymond Pearl, Director, Institute for Biological Research, Johns Hopkins University, Baltimore, Md. Representing the National Academy of Sciences, W. H. Howell, *Vice-President and Chairman of Executive Committee*, Johns Hopkins University, Baltimore, Md.; R. A. Millikan, Director, Norman Bridge Laboratory of Physics, California Institute of Technology, Pasadena, Calif.; David White, Senior Geologist, U. S. Geological Survey. Representing National Research Council, Vernon Kellogg, Secretary Emeritus, National Research Council, Washington, D. C.; C. G. Abbot, Secretary, Smithsonian Institution, Washington, D. C.; Harrison E. Howe, Editor of Industrial and Engineering Chemistry. Representing Journalistic Profession, John H. Finley, Associate Editor, New York Times; Mark Sullivan, Writer, Washington, D. C.; Marlen E. Pew, Editor of Editor and Publisher, New York City. Representing E. W. Scripps Estate, Harry L. Smithton, *Treasurer*, Cincinnati, Ohio; Robert P. Scripps, Scripps-Howard Newspapers, West Chester, Ohio; Thomas L. Sidlo, Cleveland, Ohio.

Staff of Science Service

Director, Watson Davis; Staff writers: Frank Thone, Emily C. Davis, Jane Stafford, Marjorie Van de Water, J. W. Young; Librarian, Minna Gill; Sales and Advertising Manager, Hallie Jenkins.

Copyright, 1934, by Science Service, Inc. Reproduction of any portion of the SCIENCE NEWS LETTER is strictly prohibited since it is distributed for personal, school, club or library use only. Newspapers, magazines and other publications are invited to avail themselves of the numerous syndicate services issued by Science Service, details and samples of which will gladly be sent on request.

Members of the American Association for the Advancement of Science have the privilege of subscribing to the SCIENCE NEWS LETTER at the reduced price of \$3 per year. Application for this privilege should be accompanied by privilege card obtained from the Permanent Secretary, A. A. A. S., Smithsonian Institution Building, Washington, D. C.

Publication Office, 1930 Clifton Ave., Baltimore, Md., Editorial and Executive Office, Constitution Ave. at 21st St., N. W., Washington, D. C.

Address all communications to Washington, D. C. Cable address: Scienservc, Washington.

Entered as second class matter October 1, 1926, at the post-office at Baltimore, Md., under the act of March 3, 1879. Established in mimeographed form March 13, 1922. Title registered as trade-mark, U. S. and Canadian Patent Offices.

DO YOU KNOW?

The Texas grapefruit crop was seriously reduced by autumn storms.

Moscow, capital of the Soviet Union, has a population of about four million.

At least 17 species of frogs are native to the United States and Canada, but few are of commercial value.

More than 85,000 persons joined in the Biological Survey's rat destruction campaign in the year ending June 30, 1933.

A pair of wolves often cover from 100 to 150 miles of territory around their den while foraging for their young.

Electric lamps of only 3-watt consumption that bring "moonlight" indoors, are the latest all-night lamp developed.

Chemists have found that if the calcium content of milk is reduced with zeotile, the curd formed in the stomach assumes a more easily digestible, flaky condition.

The 150-mile Baltic-White Sea Canal, built by Soviet engineers, has 12 locks and 15 dams.

Glaciers are divided into "living" and "dead" according to whether they are actively receding or not.

The art of blowing glass was learned, archaeologists believe, shortly before the Christian era in either Syria or Egypt.

An open air museum has been established at Lake Constance, Germany, where there were over 30 villages of lake dwellers in prehistoric times.

Experiments show that if Kieffer pears are ripened at 60 degrees Fahrenheit, they have the best flavor and texture, and compare favorably with Bartlett pears.

The government will kill two birds with one stone by buying 100,000 sheep from the overgrazed Navajo Indian sheep range, and giving the sheep as food to destitute Indians of northern states.

WITH THE SCIENCES THIS WEEK

ARCHAEOLOGY

What is the land of oldest things? p. 6.

ASTRONOMY

How large is the great nebula of Orion? p. 10.

Where does the wind blow 40 miles a second? p. 5.

BOTANY

How can you stop a plant from increasing in thickness? p. 8.

CHEMISTRY

Do you like smell 6523? p. 4.

ECONOMICS

Do high taxes reduce consumption? p. 4.

ETHNOLOGY

Who proposes marriage in Dahomey? p. 14.

GEOLOGY

How fast are Alaskan glaciers retreating? p. 7.

GEOPHYSICS

Where is the air ionization greatest? p. 9.

HEREDITY

How many ancestors can you "take after"? p. 3.

ICHTHYOLOGY

What kind of substance "conditions" water for fish? p. 15.

ORNITHOLOGY

What is the most humorless bird? p. 15.

What kind of bird lives in apartment houses? p. 8.

PALEONTOLOGY

What walked on its hind legs 80,000,000 years ago? p. 9.

PHYSICS

How are protons born? p. 3.

PHYSIOLOGY

Can your muscles protect you against disease? p. 3.

How much coffee will counteract a drink of gin? p. 9.

Will a frozen heart resume its functioning? p. 8.

PSYCHIATRY

What is the Wihtigo psychosis? p. 15.

What personality is characteristic of persons suffering from stomach ulcers? p. 12.

What therapeutic value lies in the puppet show? p. 6.

PSYCHOLOGY

Do bright children lose in I. Q.? p. 4.

RADIO

How can the radio talk eliminator be beat? p. 13.

STATISTICS

Is the maternal mortality rate greater than the death by violence rate? p. 9.

ZOOLOGY

What explains longevity in the female of the species? p. 8.

These curiosity-arousing questions show at a glance the wide field of scientific activity from which this week's news comes. Book references in italic type are not sources of information for the article, but are references for further reading. Books cited can be supplied by Book Dept., Science News Letter, at publishers' prices, prepaid in the United States.