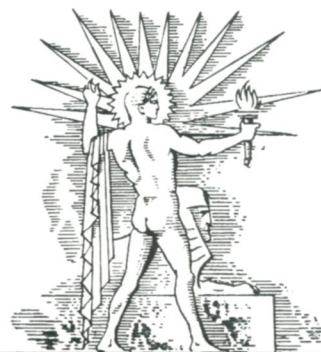
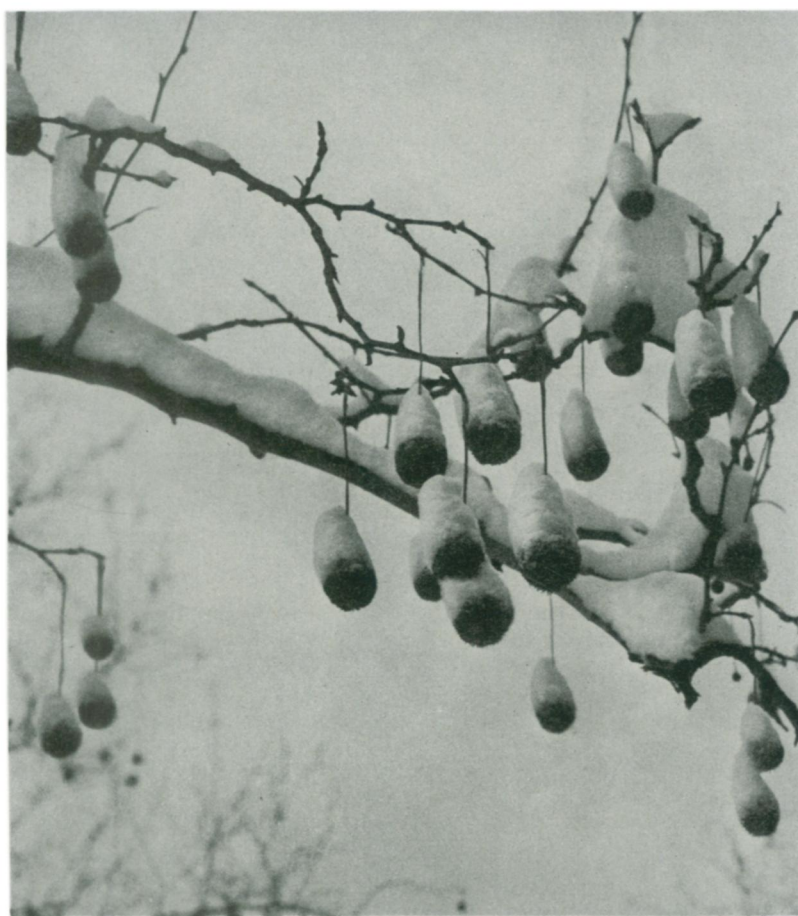


PRICE
15¢

SCIENCE NEWS LETTER

THE WEEKLY SUMMARY OF CURRENT SCIENCE •



February 17, 1940

Cold Beauty

See Page 110.

A SCIENCE SERVICE PUBLICATION

Do You Know?

During the late Middle Ages, three of the rectors of the University of Paris were Finns.

A technical school is starting the first course in the design of welded structures to be offered in New York City.

New York agriculturists are trying to devise simple and reliable tests to detect forest tree and shrub seed that will not germinate.

Nutrition standards of the Finns are the finest in the civilized world today, declares Michael J. Walsh, University of California nutritionist.

"Lack of rubber," says Secretary of Agriculture Henry Wallace, "is the greatest single obstacle to our having a self-sustaining Western Hemisphere.

An agricultural experiment station has produced a clear and attractive rhubarb juice by pressing the rhubarb between folds of muslin, and using lime to take out the oxalic acid.

It takes the whole alphabet to list occupations required in making modern automobiles, with at least 47 occupations under the letter C alone, and so on to X-ray man, yardman, and zinc plater.

Although the island of Crete is seen by some archaeologists as an ancient center of empire, ruling wide areas of the Mediterranean mainland, yet no Cretan artist apparently thought it worth while to portray historic events.

QUESTIONS DISCUSSED IN THIS ISSUE

Most articles which appear in SCIENCE NEWS LETTER are based on communications to Science Service, or on papers before meetings. Where published sources are used they are referred to in the article.

ANTHROPOLOGY

When did the first Americans arrive? p. 103.

ARCHAEOLOGY

What ancient beauty spot has been unearthed in Rome? p. 104.

BIOLOGY

What living creatures can survive six months without air? p. 110.

CHEMISTRY

From what new materials are fabrics now being made? p. 106.

How has rubber sheeting been adapted to the use of the chemist? p. 99.

How is metallic sodium now being shipped commercially? p. 105.

How is nylon used to make a superior patent leather? p. 100.

How many synthetic chemicals are made by one company from the gas from oil refineries? p. 100.

CLIMATOLOGY

Why is the Pacific Coast basking in a warm winter? p. 103.

ENGINEERING

How has standardization come to the aid of the artist? p. 104.

GENERAL SCIENCE

How will Finnish science be made available to the rest of the world? p. 104.

MEDICINE

For what medical use is white wine extract of belladonna considered best? p. 99.

What warning will in future appear on castor oil bottles? p. 105.

METEOROLOGY

What complaint have the crew of the Byrd expedition with regard to the weather? p. 104.

PHYSIOLOGY

How are scientists tracing the course of vitamin B through the body? p. 104.

What new glandular extract has been found to influence the body's use of sugar? p. 110.

PHYSIOLOGY—PSYCHIATRY

What effect would the wrong diet have on soldiers? p. 101.

PLANT PATHOLOGY

What disease threatens the beautiful mimosa tree? p. 111.

POPULATION

To what fact does Finland probably owe her ability to make good use of her resources? p. 111.

PSYCHOLOGY—SOCIOLOGY

Would the world be better if women proposed? p. 102.

PUBLIC HEALTH

For what diseases have new low death rates been established? p. 104.

ZOOLOGY

For what will the Smithsonian-Firestone expedition search in Liberia? p. 105.

A special nickel steel developed for armor plate is used in thicknesses up to 26 inches in protecting vital parts of battleships.

New Guinea natives had ideas about waging economic war against an enemy, such as using charms that would supposedly destroy crops.

Starfish destroy and eat enough oysters in Long Island Sound alone to cost irate oystermen \$750,000 a year.

A zoologist says that there is no known way of telling the age of an adult bird by looking at it—loss of feathers, state of beak or claws may indicate disease, but not old age.

SCIENCE NEWS LETTER

Vol. 37 FEBRUARY 17, 1940 No. 7

The Weekly Summary of Current Science, published every Saturday by SCIENCE SERVICE, Inc., 2101 Constitution Avenue, Washington, D. C. Edited by WATSON DAVIS.

Subscriptions—\$5.00 a year; two years \$7.00; 15 cents a copy. Ten or more copies to same address, 5 cents a copy. Back numbers more than six months old, 25 cents.

In requesting change of address, please give your old address as well as the new one, at least two weeks before change is to become effective.

Copyright, 1940, by Science Service, Inc. Reproduction of any portion of SCIENCE NEWS LETTER is strictly prohibited. Newspapers, magazines and other publications are invited to avail themselves of the numerous syndicate services issued by Science Service.

Cable address: Scienservc, Washington.

Entered as second class matter at the post-

office at Washington, D. C., under the Act of March 3, 1879. Established in mimeographed form March 18, 1922. Title registered as trademark, U. S. and Canadian Patent Offices. Indexed in Readers' Guide to Periodical Literature, Abridged Guide, and in the Engineering Index.

Members of the American Association for the Advancement of Science have privilege of subscribing to SCIENCE NEWS LETTER at \$3 a year.

The New York Museum of Science and Industry has elected SCIENCE NEWS LETTER as its official publication to be received by its members.

Advertising rates on application. Member Audit Bureau of Circulation.

SCIENCE SERVICE is the Institution for the Popularization of Science organized 1921 as a non-profit corporation, with trustees nominated by the National Academy of Sciences, the National Research Council, the American Association for the Advancement of Science, the E. W. Scripps Estate and Journalistic profession.

Board of Trustees—Honorary President: William E. Ritter, University of California. Representing the American Association for the Advancement of Science; J. McKeen Cattell, Edi-

tor, Science; Henry B. Ward, University of Illinois; Edwin G. Conklin, President, American Philosophical Society. Representing the National Academy of Sciences: W. H. Howell, Vice-President and Chairman of Executive Committee, Johns Hopkins University; R. A. Millikan, California Institute of Technology; Harlow Shapley, Harvard College Observatory. Representing National Research Council: C. G. Abbot, Secretary, Smithsonian Institution; Harrison E. Howe, Editor, Industrial and Engineering Chemistry; Ross G. Harrison, Yale University. Representing Journalistic Profession: John H. Finley, Editor, New York Times; Neil H. Swanson, Baltimore Evening Sun; O. W. Riegel, Washington and Lee School of Journalism. Representing E. W. Scripps Estate: Harry L. Smithton, Treasurer, Cincinnati, Ohio; Warren S. Thompson, Miami University, Oxford, Ohio; Karl Bickel, E. W. Scripps Co.

Staff—Director, Watson Davis; Writers, Frank Thone, Emily C. Davis, Jane Stafford, Marjorie Van de Water, Robert Potter; Correspondents in principal cities and centers of research. Photography: Fremont Davis; Librarian: Minna Gill; Sales and Advertising: Hallie Jenkins, Austin Winant, Howard Bandy.