

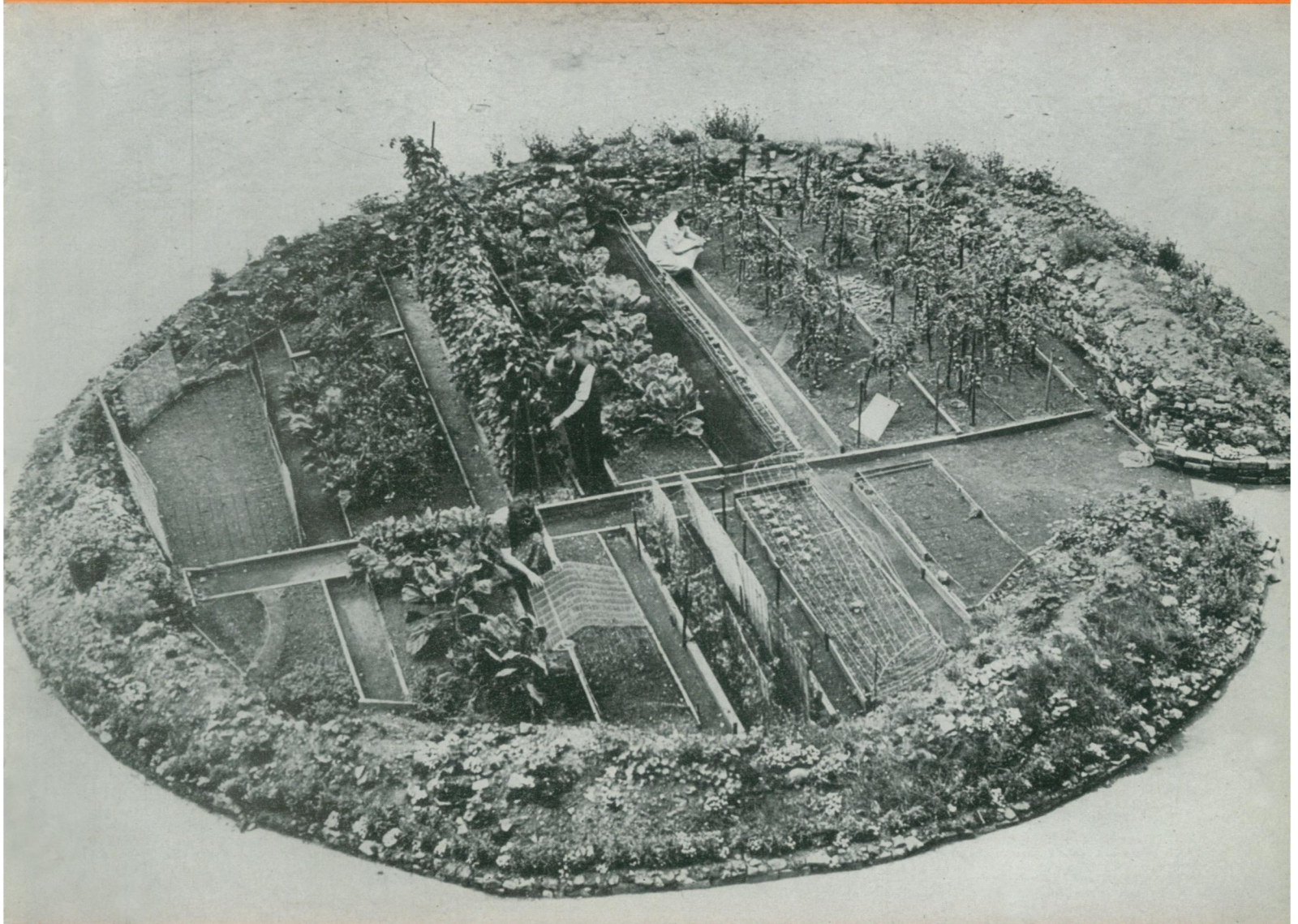
15<sup>c</sup>



# SCIENCE NEWS LETTER

THE WEEKLY SUMMARY OF CURRENT SCIENCE •

MAY 1, 1943



The Better 'Ole

See Page 281

A SCIENCE SERVICE PUBLICATION



## Do You Know?

During the summer the *black widow* spider constructs approximately six silken egg sacs, each containing about 300 eggs.

The United States, formerly the world's largest potash-importing country, is now a *potash* producer and exporter.

Some 5,224 people have been killed in approximately 2,800 *tornadoes* during the past twenty years, and the property loss exceeded \$230,000,000.

Soil for a window box can be *sterilized* by putting it in the kitchen oven with a potato buried in it; when the potato is thoroughly baked the sterilization is complete.

A grain of *rice* with the husk removed consists of three layers: the outer has most of the mineral constituents; the middle layer, albumen and fat; and an inner portion packed with starch granules.

Eight distilleries are expected to be in operation in Brazil next year producing annually over 4,000,000 gallons of motor *alcohol* from *mandioca*, better known here as cassava, the source of tapioca.

*Bees* are helping in the war effort: they increase the production of fruit and many forage crops by pollinizing flowers; produce honey to help in the sugar shortage, and beeswax to coat shells and airplanes.

## Question Box

### Page numbers of Questions discussed in this issue:

#### ASTRONOMY

What great astronomical event will be commemorated during May? p. 282.

What new facts about the clouds in space were revealed by study of the Seven Sisters? p. 281.

What scientific discovery was recently made in Finland? p. 280.

What unusual gas was recently discovered in the head of a comet? p. 280.

Where was gold just discovered? p. 285.

#### ENGINEERING

How can the walls of a house be made transparent or opaque at will? p. 276.

#### ENTOMOLOGY

What drug has been used to annihilate cattle lice? p. 280.

#### GENERAL SCIENCE

What book was written especially for soldiers on shipboard? p. 278.

#### GEOLOGY

What island base of the Japanese is sinking into the sea? p. 279.

#### GEOPHYSICS

How will radio reports be received about the ocean currents? p. 275.

What is the structure of a shower of rain? p. 275.

#### HORTICULTURE

Where was a Victory Garden planted in a shell-hole? p. 281.

Most articles which appear in SCIENCE NEWS LETTER are based on communications to Science Service, or on papers before meetings. Where published sources are used they are referred to in the article.

#### MEDICINE

How have fish contributed a new remedy for high blood pressure? p. 286.

What condition should physicians look for after blood or plasma transfusions? p. 283.

What cure has been found for a rare type of acne? p. 284.

#### METEOROLOGY

Which condition is worse for icing, heavy snow or a cold drizzle? p. 284.

#### PHYSICS

Why is it difficult to measure large quantities of water by means of dissolved radium? p. 285.

#### PHYSIOLOGY-ENTOMOLOGY

What accounts for the speed of an animal's change of color? p. 277.

#### PLANT PHYSIOLOGY

By what mechanism do auxins stimulate growth on plants? p. 280.

#### PSYCHOLOGY

What effect may birth-control chemicals have on the young "accidentally" born? p. 281.

#### PUBLIC HEALTH

How should the health of America's children be guarded this summer? p. 276.

What new protection has been produced for workers' ears? p. 287.

#### RESOURCES

What new plastic is expected to supplement mica? p. 281.

Irrigation is necessary for the growing of *coffee* where the annual rainfall is below 30 inches annually.

Eighteen years of *excavations* on more than 40 sites in New York State constitute the basis of a forthcoming book on pre-Iroquoian cultures.

U. S. Bureau of Mines crews are fighting Alaska's bad weather and rough country to locate *minerals* that will yield metals for fighting equipment.

*Hydroelectric plants* put into operation in Canada in 1942 have a total capacity of 378,600 horsepower.

The New Zealand *butter* production for the year ended July 31, 1942, was approximately 103,000 tons, a decrease of 25% from the preceding year.

The U. S. Public Health Service has made more than 160,000 X-ray examinations of workers in war industries for *tuberculosis* since the war began.

## SCIENCE NEWS LETTER

Vol. 43 MAY 1, 1943 No. 18

The Weekly Summary of Current Science, published every Saturday by SCIENCE SERVICE, Inc., 1719 N St., N. W., Washington, D. C. North 2255. Edited by WATSON DAVIS.

Subscriptions—\$5.00 a year; two years, \$7.00; 15 cents a copy. Ten or more copies to same address, 5 cents a copy. Back numbers more than six months old, 25 cents.

In requesting change of address, please give your old address as well as the new one, at least two weeks before change is to become effective.

Copyright, 1943, by Science Service, Inc. Reproduction of any portion of SCIENCE NEWS LETTER is strictly prohibited. Newspapers, magazines and other publications are invited to avail themselves of the numerous syndicate services issued by Science Service.

Circle address: Scienserve, Washington. New York office: 310 Fifth Avenue, CHickering 4-4565.

Entered as second class matter at the post-office at Washington, D. C., under the Act of

March 3, 1879. Established in mimeographed form March 18, 1922. Title registered as trademark, U. S. and Canadian Patent Offices. Indexed in Readers' Guide to Periodical Literature, Abridged Guide, and in the Engineering Index.

The Science Observer, established by the American Institute of the City of New York, is now included in the SCIENCE NEWS LETTER.

The New York Museum of Science and Industry has elected SCIENCE NEWS LETTER as its official publication to be received by its members.

Member Audit Bureau of Circulation. Advertising Representatives: Howland and Howland, Inc., 393 7th Ave., N. Y. C., Pennsylvania 6-5566; and 360 N. Michigan Ave., Chicago, STate 4439.

SCIENCE SERVICE is the Institution for the Popularization of Science organized 1921 as a non-profit corporation.

Board of Trustees—Nominated by the American Association for the Advancement of Science: Henry B. Ward, University of Illinois; Edwin G. Conklin, American Philosophical Society; J. McKeen Cattell, Editor, Science. Nominated by the National Academy of Sciences: R. A. Millikan, California Institute of Technology;

Harlow Shapley, Harvard College Observatory; W. H. Lewis, Wistar Institute. Nominated by the National Research Council: Ross G. Harrison, Yale University; C. G. Abbot, Secretary, Smithsonian Institution. Nominated by the Journalistic Profession: O. W. Riegel, Washington and Lee School of Journalism; A. H. Kirchofer, Buffalo Evening News; Neil H. Swanson, Executive Editor, Sun Papers. Nominated by the E. W. Scripps Estate: Frank R. Ford, Evansville Press; Warren S. Thompson, Miami University, Oxford, Ohio; Harry L. Smithton, Cincinnati, Ohio.

Officers—Honorary President: William E. Ritter. President: Edwin G. Conklin. Vice-President and Chairman of Executive Committee: Harlow Shapley. Treasurer: O. W. Riegel. Secretary: Watson Davis.

Staff—Director: Watson Davis. Writers: Frank Thone, Jane Stafford, Marjorie Van de Water, Morton Mott-Smith, Glenn Sonnedecker. Science Clubs of America: Joseph H. Kraus, Margaret E. Patterson. Photography: Fremont Davis. Librarian: Page Secret. Sales and Advertising: Hallie Jenkins. Correspondents in principal cities and centers of research.