

15¢



SCIENCE NEWS LETTER

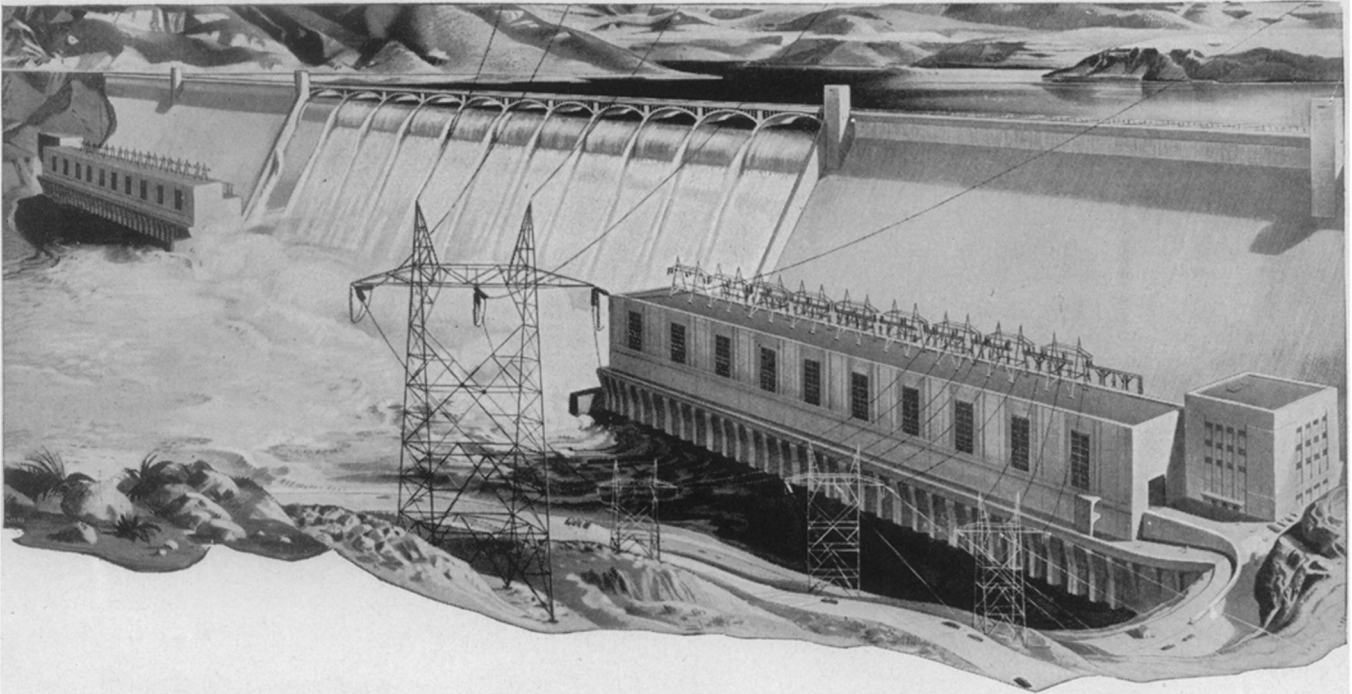
THE WEEKLY SUMMARY OF CURRENT SCIENCE • JANUARY 8, 1944



Pacific Task Force

See Page 30

A SCIENCE SERVICE PUBLICATION

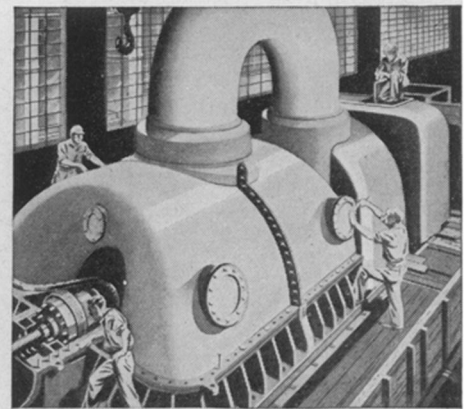


Westinghouse generators make power for a nation at war...

From the world's largest water-wheel generators at Grand Coulee Dam—from Westinghouse steam-driven generators in power plants throughout the nation—flow billions of kilowatts of electric power to turn the wheels of America's war industry.

Westinghouse combines the power of a thousand human skills...

A workman at a lathe, a girl on an assembly line, an engineer on the test floor—theirs, and the countless other skills of 117,000 Westinghouse employees, are welded into a single great production force. Their vast experience and knowledge help to produce the vitally needed power-generating equipment to drive America's mighty war machine.



Westinghouse contributes the power of immense new knowledge...

When the incredible weapons born of wartime research are reforged for peacetime service, the daily miracles that electricity will perform are certain to create new and finer standards of living . . . while the cost of electricity continues to decrease as our nation's power-generating capacity continues to increase. Westinghouse Electric & Manufacturing Company, Pittsburgh, Pa. Plants in 25 cities—offices everywhere.

