

# • New Machines and Gadgets •

☛ **FINGERNAIL** polish removing device is a small tube, one end of which fits the bottle of polish remover, the other end enlarged to fit the finger. The larger end is flattened on one side and has two slots for a narrow cloth to rub on the fingernail, which is wetted by up-ending the bottle.

Science News Letter, December 16, 1944

☛ **BUDGETING** pocketbook, recently patented, is a woman's handbag with a number of small individual purses stitched in a row on the inside. Each purse is labeled to indicate for what purpose the money contained therein is intended. The pocketbook is designed to help the owner "observe a budget."

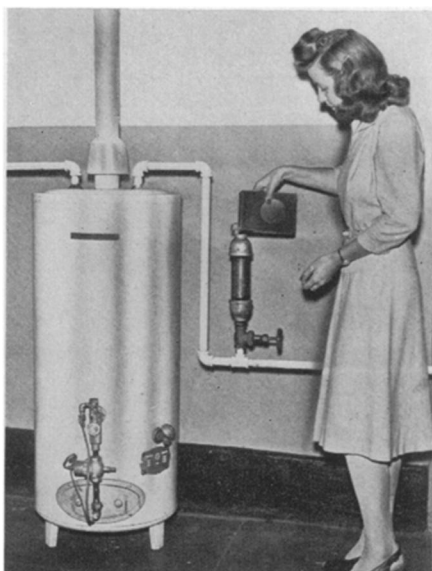
Science News Letter, December 16, 1944

☛ **DIRECTION-aiming** device for automobiles permits the driver to see in advance the exact line of travel the wheel of the car will take. It consists of an open sight fixed on the windshield and another on the hoodcap. The line of sight through these two openings hits the road where the wheel will pass.

Science News Letter, December 16, 1944

☛ **ICE GUARD** for drinking glasses holds the cracked ice below the surface and away from the lips of the user. A circular wire or other screen is held in place inside the glass by a clip fitted over the rim.

Science News Letter, December 16, 1944



☛ **CHEMICAL** solution feeder, shown in the picture, permits the housewife to insert into the plumbing system compounds to remove scales and corrosion from the inside of pipes, tanks and boilers. Several chemical compounds for this purpose are available, one being a soluble sodium-phosphate glass.

Science News Letter, December 16, 1944

☛ **STORM WINDOW**, made of a transparent flexible plastic, is raised and lowered as needed much in the same way as the ordinary window shade. The

edges of the flexible material run in felt-lined side channels, thus preventing air circulation. Sprocket wheels and chain help in lowering and raising the plastic sheet.

Science News Letter, December 16, 1944

☛ **SHORTHAND** practice book, for learning stenography without an instructor, consists of a series of exercises, each of which have three sheets, one under the other. The top replaceable transparent sheet is lined for writing in shorthand directly over visible words on the second sheet. The third sheet has the correct shorthand characters.

Science News Letter, December 16, 1944

If you want more information on the new things described here, send a three-cent stamp to SCIENCE NEWS LETTER, 1719 N St., N. W., Washington 6, D. C., and ask for Gadget Bulletin 238.

## Let us do it

When you want a book on science, save yourself the trouble of shopping. Let us get it for you. We will gladly obtain any American book or magazine in print and pay postage in the United States. Just send your check or money order to cover retail price (\$5 if price is unknown, change to be returned to you). When publications are free, send 10c for handling. Address:

Book Department

SCIENCE NEWS LETTER  
1719 N St., N. W., Washington 6, D. C.

## Question Box

### ASTRONOMY

How is a synthetic sky used to train navigators? p. 399.

### BOTANY

What is the real name of the Douglas fir? p. 398.

### ENGINEERING

How vast is the present use of air conditioning? p. 394.

What is papreg? p. 391.

### GEOGRAPHY

Where do the men who fly the bombers to Iceland receive their "briefing"? p. 389.

### MEDICAL ECONOMICS

What is the plan which has been presented by the Health Program Conference? p. 388.

### MEDICINE

From what is the "synthetic blood plasma"

developed in Sweden made? p. 392.

How successful was penicillin in the human anthrax cases in which it was tried? p. 392.

What is the "material of choice"? p. 392.

### ORDNANCE

How is heavy artillery made more accurate by new electronic equipment? p. 388.

### PUBLIC HEALTH

What is shipyard eye? p. 387.

Why is it believed that a number of men serving in the armed forces where leprosy is prevalent will become its victims? p. 387.

### SEISMOLOGY

What part of Japan was affected by the earthquake? p. 393.

### ZOOLOGY

From where did the two oryxes now at the zoo in Washington come? p. 393.

Where published sources are used they are cited.

The imprint to the right is mailing address for your Science News Letter.

Date on lower line is expiration of your subscription.

Renew early to avoid lapse in service.

In requesting change of address please give your old address as well as the new one, at least two weeks before change is to become effective.