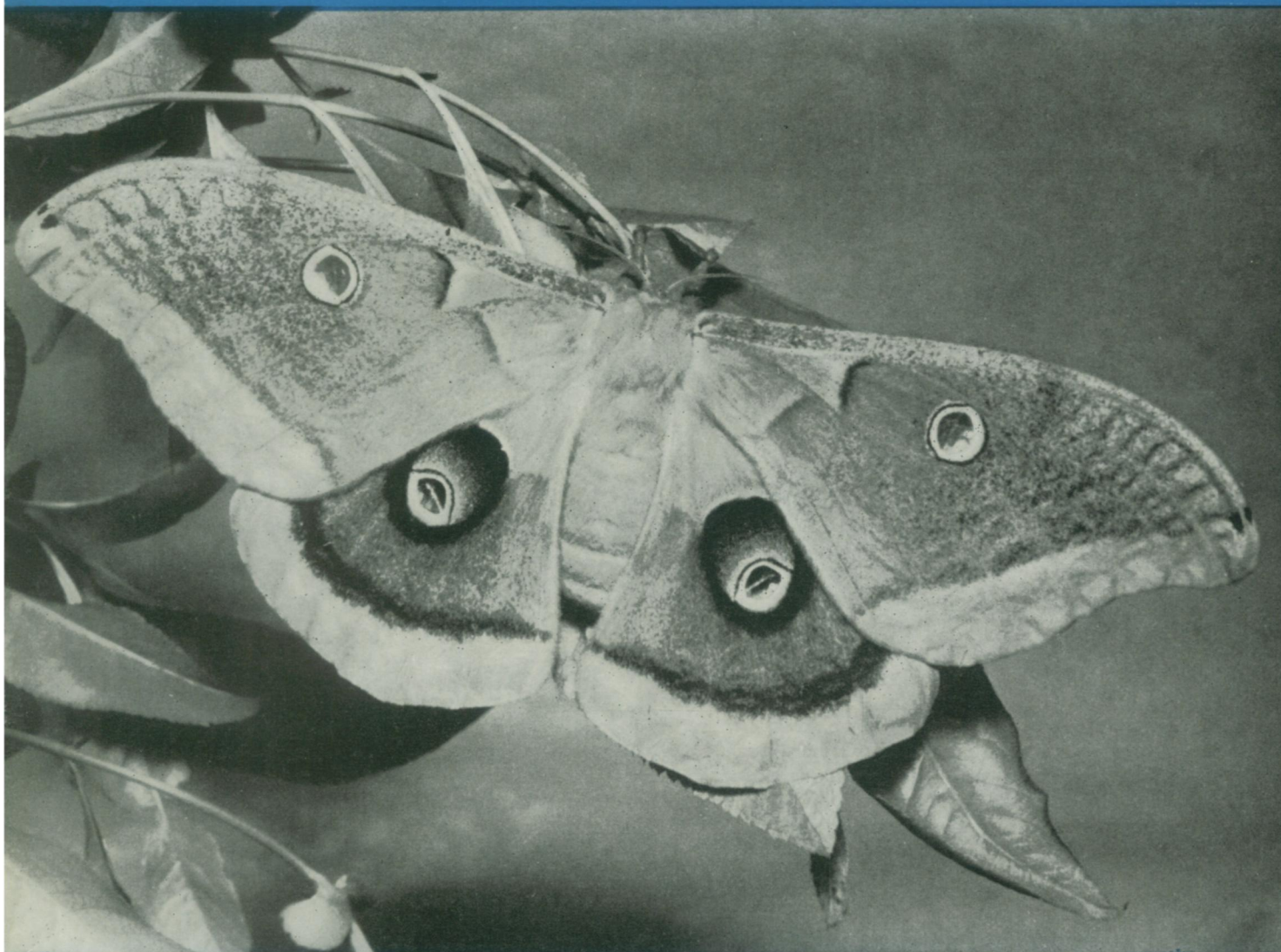


15¢

# SCIENCE NEWS LETTER

Vol. 49, No. 23

THE WEEKLY SUMMARY OF CURRENT SCIENCE • JUNE 8, 1946



Only Beautifies!

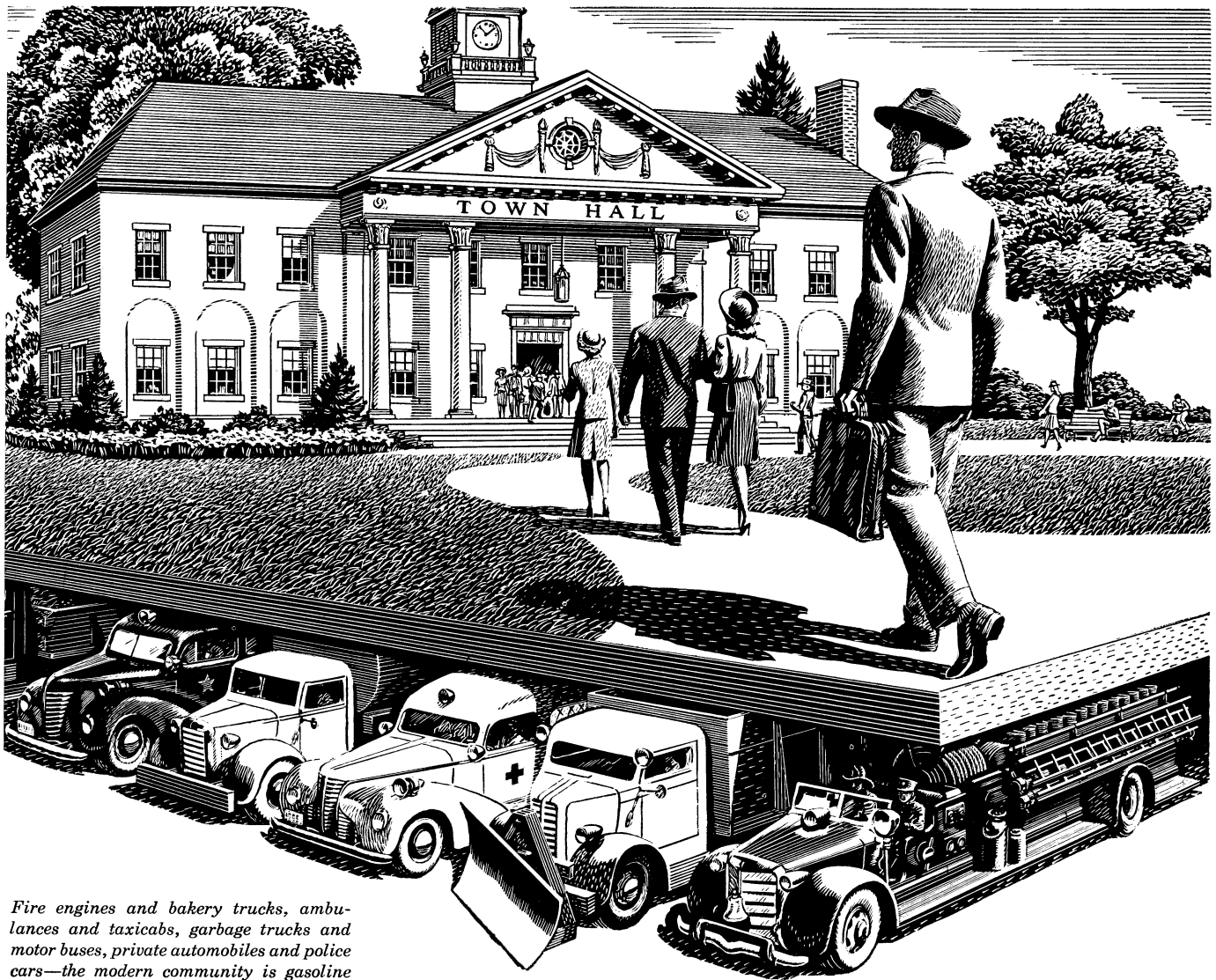
See Page 360

A SCIENCE SERVICE PUBLICATION

1921

TWENTY-FIFTH ANNIVERSARY

1946



*Fire engines and bakery trucks, ambulances and taxicabs, garbage trucks and motor buses, private automobiles and police cars—the modern community is gasoline powered from city hall to city limits.*

## Your community runs on gasoline

ON YOUR WAY to lunch some busy noontime count the many different types of motor vehicles it takes to keep your community rolling. It will help you understand why the improvement of gasoline transportation—why every increase in the power and economy of gasoline engines—benefits *everyone* in town.

For many years, Ethyl antiknock fluid, used by refiners to improve gasoline, has been of considerable help in the big, overall job of providing the nation with more economical transportation. That is because so many improvements in engines have depended to a large extent upon the availability of higher antiknock gasoline.

During the war, when the bulk of the antiknock fluid manufactured was needed for aviation and military gasoline, civilian vehicles were forced to operate on fuels of lower antiknock quality. This resulted in loss of power, performance and economy which could not be avoided under wartime conditions.

For it is true that anything which prevents the de-

velopment and use of higher antiknock motor fuels can not help but impede progress in automotive transportation. On the other hand, each improvement in the quality of gasoline by petroleum refiners is a definite step toward better and more economical transportation for your community. Ethyl Corporation, Chrysler Building, New York 17, N. Y.

.....  
*More power from every gallon  
of gasoline through*

**ETHYL**



*Research • Service • Products*  
.....