

PSYCHIATRY

Mental Disease Increases

Living under Communism has produced a great increase in mental illness in China. Workers are being steeped in the teachings of Marx, Engels, and Lenin.

➤ MENTAL illness has "remarkably increased" in China due to the rapid change of culture under communism, reports a Chinese psychiatrist in a letter to colleagues in this country.

The letter was not mailed in China and the name of the Chinese psychiatrist is being withheld at the request of his American colleagues to protect him from possible reprisal by the communist government in China.

The increase in mental illness, the Chinese psychiatrist reports, has been brought to the attention of the government and several psychiatric institutes will be organized.

"Based on Bolshevism, the revolution in China will affect the entire course of history and the traditional philosophy," reports the Chinese psychiatrist.

"Every worker is encouraged to study and learn the teachings of Marx, Engels, and Lenin. The idea is that unless one is well acquainted with these teachings and understands the historical development of society, he will be easily misled toward the wrong direction and also will not be able to handle his knowledge properly."

This extends to professional classes as well as workers. A month of such study is required in every college before the regular classes open. "Workers," presumably psychiatrists and other doctors, in the National Neuropsychiatric Institute must spend half of every day for two months in studying and learning Marxism, Leninism and similar writers.

"There is a tendency that psychiatry in China will be involved in revolution following the example of the Soviet Union and the characteristics of China," states the Chinese psychiatrist in his report to his friends in America.

"The revolution will be based on the Dialectic Materialism. We psychiatric workers in China are encouraged to study and analyze the psychiatric theories and find out how much is materialistically based. Those parts coming from the idealistic viewpoint will be expelled. The general attitude toward Freudian theories sounds unfavorable in the Socialist world."

The present attitude in China toward personality adjustment and criminals is described by the Chinese psychiatrist as follows:

"People are educated to apply mutual criticism and self-confession which are considered to be the most valuable weapons for improving one's personality.

"Thus the law offender is not always imprisoned as before, but he is asked to confess before the public, then is opened to criticism. If he is frank enough and accepts comments heartily, he is considered excusable and hopeful.

"This sort of education has been proved effective elsewhere," the Chinese psychiatrist comments, obviously referring to the Soviet Union and its satellite countries.

He states that even after a number of months he himself is "a little bit confused about the new environment" and finds it somewhat difficult to readjust himself.

Science News Letter, August 12, 1950

ENGINEERING

Aluminum Prefab Protects Soldiers from Wind, Cold

➤ COMPLETE protection from 100-mile gales and sub-zero weather is provided for soldiers by a new aluminum prefabricated building developed by the Army Engineer Research and Development Laboratories at Fort Belvoir, Va., in collaboration with Chrysler Corporation.

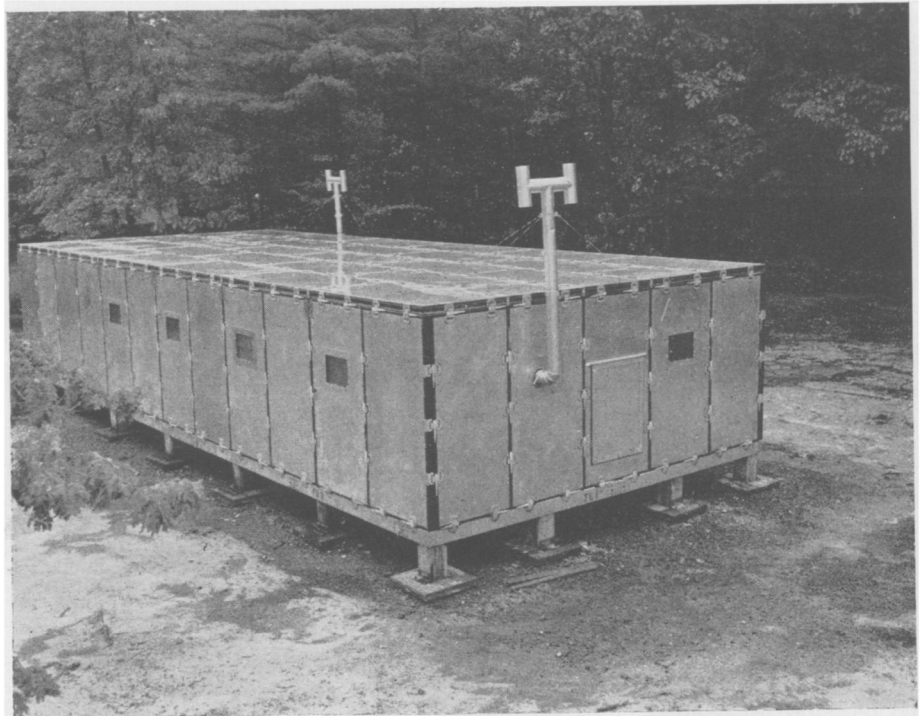
It is a box-shaped structure with flat roof that can be erected quickly in the field. It is 20 feet wide and eight feet high, and can be any multiple of eight feet in length that may be desired. The unit now under tests is 48 feet long.

The prefabricated parts are restricted to approximately 100 pounds in weight for easy handling. The structure utilizes channel aluminum floor beams, and panels for walls, roof and floor made of honeycomb construction. The panels are an aluminum alloy. The inner and outer sheets of the alloy are separated by a craft paper impregnated with a resin and shaped to resemble the familiar honeycomb. This type of panel has both strength and resistance to heat passage.

Panels are held together by simple wedge-type connector pins. No special skill is required for erection; the job can be done by ordinary soldiers. Each unit has its own heating and sanitation facilities. The furnaces are oil-fired and blast-driven. They provide a hot-air heating system. An indoor temperature of 70 degrees Fahrenheit can be maintained even when the outside temperature is 65 degrees below zero.

This building is another example of activities of all branches of the Armed Services in developing suitable structures for servicemen for use in various parts of the world and under various conditions. Ease of erection in forward areas is an essential. The particular weather to be encountered is the number one consideration.

Science News Letter, August 12, 1950



BUT IT'S SO WARM INSIDE—The aluminum prefabricated hut which can be erected quickly in the field provides complete protection for GIs in sub-zero weather.