

• New Machines and Gadgets •

For addresses where you can get more information on the new things described here, send a three-cent stamp to SCIENCE NEWS LETTER, 1719 N ST., Washington 6, D. C. and ask for Gadget Bulletin 617. To receive this Gadget Bulletin without special request each week, remit \$1.50 for one year's subscription.

⚙️ **OUTDOOR "FLAMELESS"** grill with a stainless steel frame and large working area uses infra-red rays to cook meat. Designed to eliminate drafts, the grill burns charcoal slowly and evenly, thus keeping fats dripping into the fire from flaring up and scorching the meat.

Science News Letter, April 12, 1952

⚙️ **URANIUM PROSPECTING** outfit of the assemble-it-yourself-in-one-evening type is a sensitive, portable Geiger counter weighing three pounds. Headphone clicks and neon-bulb flashes report gamma and beta radiation of uranium, pitchblende, radium, cosmic and X-rays.

Science News Letter, April 12, 1952

⚙️ **WING BADGE** for poultry identification is molded of plastic with permanent black numbers or letters which can be read at distances up to 40 feet. The badge slips over the wing and may be fastened with pliers. It is dirt- and weather-resistant.

Science News Letter, April 12, 1952

⚙️ **TOY ORGAN**, which plays automatically from rolls similar to those used by player pianos, operates on electricity, weighs four pounds and is the size of a table-model radio. Made of plastic, the organ has a range from low-to-middle-to-high C, including sharps and flats.

Science News Letter, April 12, 1952

Do You Know?

India's population is growing at the rate of 4,000,000 a year.

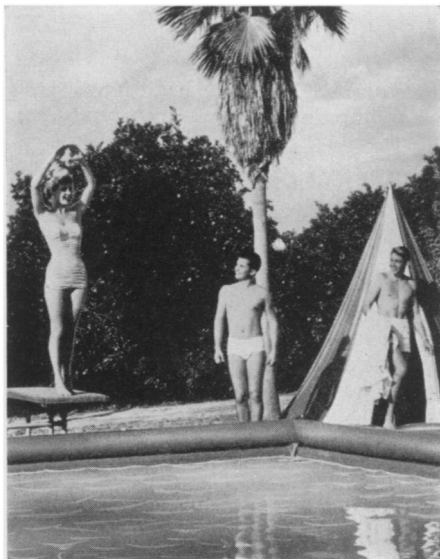
Chemical control of grasshoppers in Montana and Wyoming alone saved enough pasture grass to produce 11,000,000 pounds of beef.

The human skin consists of two layers, the epidermis, or outer layer of cells, and the dermis or inner layer of cells.

Animal fats and vegetable oils were the common lubricants until the advent of petroleum oil in 1860.

About 100 miles of glass fiber can be spun from a glass marble.

The danger of cold weather, snow or ice is no deterrent to early seeding; on the contrary, alternate freezing and thawing, melting snow or rain help bury the seed.



⚙️ **PLASTIC SWIMMING** pool for the backyard, lightweight and inexpensive, is shown in the photograph. Measuring 27 by 13 feet with a graduated depth of from three

to five feet, the pool can accommodate 15 persons, and can be covered when not in use. A plastic portable cabana can be used as a dressing room.

Science News Letter, April 12, 1952

⚙️ **NEW WINDOW SHADES** are made of washable vinyl plastic which will not fray, fade, tear or crack. The opaque gray material resists mildew, oils, flames and most chemicals. Standard-stock shades come in up to 54-inch widths and eight-foot lengths.

Science News Letter, April 12, 1952

⚙️ **TINY OIL CAN**, which resembles a fountain pen when closed, uses a hypodermic needle for a spout. Oil squirts through the stainless-steel needle point when the plastic oil reservoir is squeezed. Good for oiling those hard-to-get-at places.

Science News Letter, April 12, 1952

⚙️ **GLASS-BEADED MOVIE** screen is guaranteed to retain its whiteness and high reflective quality for ten years. The screen is washable, flame- and mildew-proof, and suitable for use in any climate.

Science News Letter, April 12, 1952

THE KNOW-HOW TO SHOW . . .

EXHIBIT TECHNIQUES

Edited by Helen Miles Davis
112 p., illus., \$2

Book Order

4-12-52

When it is time to show off a science project in science fair or exhibition, the ideas, hints and experience packed into this comprehensive volume will prove invaluable.

Many exhibits that have won prizes are pictured in photographs and diagrams as helpful suggestions to augment your own original planning and thinking.

What to guard against in laying out your material. How to label, letter and display. Ideas from professional museum preparators. Simple experiments that will be models for those you will incorporate in your project.

How to build a diorama, revolving platform, lighting adapter, models, etc.

FULLY INDEXED—CLOTH BOUND

To: SCIENCE SERVICE
1719 N St., N. W.
Washington 6, D. C.

Mail to me at my address as imprinted to the right:

-----copies of EXHIBIT TECH-
NIQUES @ \$2.00.

I enclose \$-----

Please bill me. ()

SCIENCE SERVICE
1719 N Street N. W. • Washington 6, D. C.

Clip and enclose this address imprint whenever you write us to renew your SCIENCE NEWS LETTER subscription, change address, order other materials, etc. It identifies you as one of the SNL family. Lower line date is expiration. Allow three weeks for address change.