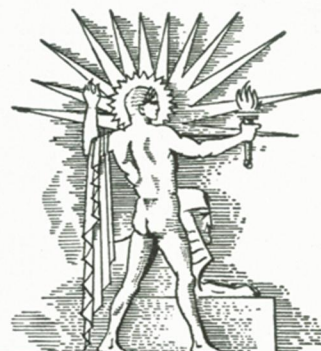
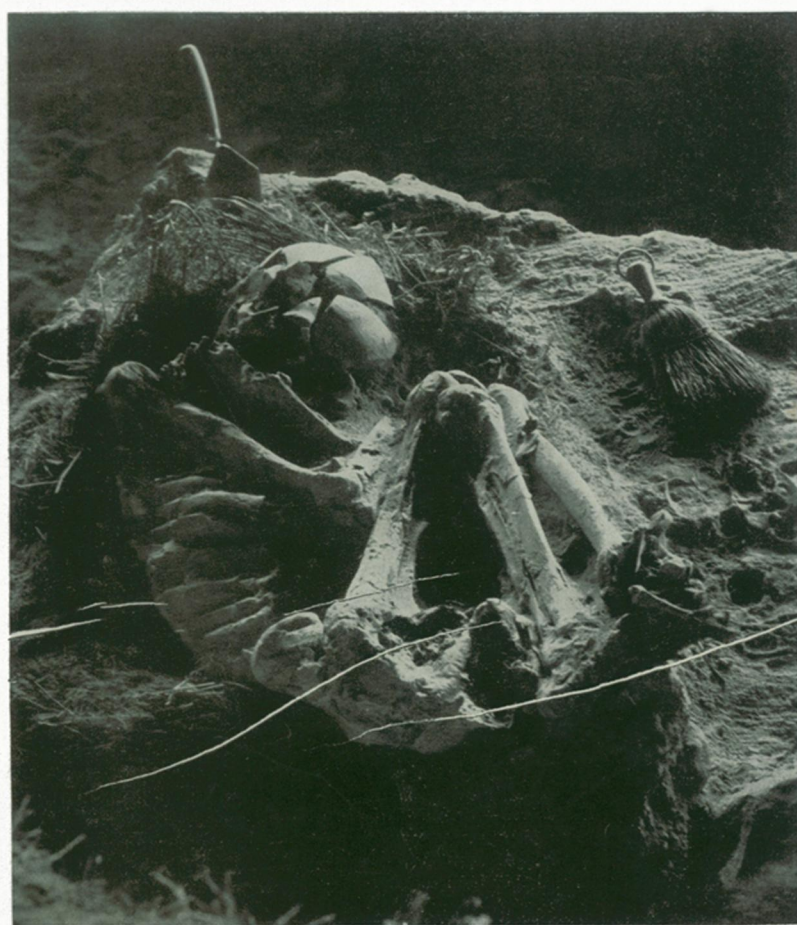


PRICE  
15¢

# SCIENCE NEWS LETTER

THE WEEKLY SUMMARY OF CURRENT SCIENCE ●



JULY 1, 1933

Camera Study of Prehistoric American

See Page 15

A

SCIENCE SERVICE PUBLICATION

# SCIENCE NEWS LETTER

VOL. XXIV

No. 638

The Weekly  Current  
Summary of Science

Published by

## SCIENCE SERVICE

The Institution for the Popularization of Science organized under the auspices of the National Academy of Sciences, the National Research Council and the American Association for the Advancement of Science.

Edited by WATSON DAVIS

Subscription rates—\$5.00 a year postpaid; two years \$7.00; 15 cents a copy. Ten or more copies to same address, 5 cents a copy. Back numbers more than six months old, 25 cents.

In requesting change of address, please give old as well as new address.

Advertising rates furnished on application.

### Board of Trustees of Science Service

*Honorary President*, William E. Ritter, University of California. Representing the American Association for the Advancement of Science, J. McKeen Cattell, *President*, Editor, Science, Garrison, N. Y.; Burton E. Livingston, Johns Hopkins University, Baltimore, Md.; Raymond Pearl, Director, Institute for Biological Research, Johns Hopkins University, Baltimore, Md. Representing the National Academy of Sciences, W. H. Howell, *Vice-President and Chairman of Executive Committee*, National Research Council, Washington, D. C.; R. A. Millikan, Director, Norman Bridge Laboratory of Physics, California Institute of Technology, Pasadena, Calif.; David White, Senior Geologist, U. S. Geological Survey. Representing National Research Council, Vernon Kellogg, Secretary Emeritus, National Research Council, Washington, D. C.; C. G. Abbot, Secretary, Smithsonian Institution, Washington, D. C.; Harrison E. Howe, Editor of Industrial and Engineering Chemistry. Representing Journalistic Profession, John H. Finley, Associate Editor, New York Times; Mark Sullivan, Writer, Washington, D. C.; Marlen E. Pew, Editor of Editor and Publisher, New York City. Representing E. W. Scripps Estate, Harry L. Smithton, *Treasurer*, Cincinnati, Ohio; Robert P. Scripps, Scripps-Howard Newspapers, West Chester, Ohio; Thomas L. Sidlo, Cleveland, Ohio.

### Staff of Science Service

Director, Watson Davis, Staff writers: Frank Thone, Emily C. Davis, Jane Stafford, Marjorie Van de Water, J. W. Young; Librarian, Minna Gill; Sales and Advertising Manager, Hallie Jenkins.

Copyright, 1933, by Science Service, Inc. Reproduction of any portion of the SCIENCE NEWS LETTER is strictly prohibited since it is distributed for personal, school, club or library use only. Newspapers, magazines and other publications are invited to avail themselves of the numerous syndicate services issued by Science Service, details and samples of which will gladly be sent on request.

Members of the American Association for the Advancement of Science have the privilege of subscribing to the SCIENCE NEWS LETTER at the reduced price of \$3 per year. Application for this privilege should be accompanied by privilege card obtained from the Permanent Secretary, A. A. S., Smithsonian Institution Building, Washington, D. C.

Publication Office, 1930 Clifton Ave., Baltimore, Md., Editorial and Executive Office, Constitution Ave. at 21st St., N. W., Washington, D. C.

Address all communications to Washington, D. C. Cable address: Scienservc, Washington.

Entered as second class matter October 1, 1926, at the post-office at Baltimore Md., under the act of March 3, 1879. Established in mimeographed form March 13, 1922. Title registered as trade-mark, U. S. and Canadian Patent Offices.

## DO YOU KNOW?

Hawks and eagles are said to sleep standing up.

Accident statistics show that July 4 is by far the most dangerous day in the year.

There are desert mice that have spines, like a porcupine's, growing among their fur.

It is estimated that the farmers' reduced purchasing power has cost four million city men their jobs.

Portugal has marked six tuna fish and released them in the hope of getting information on migratory habits of the tuna.

Some of the newest museum cases are made of glass plates cemented together, so that no wood or metal edges interfere with complete vision.

California scientists have discovered that a pestiferous black gnat that infests part of the Sacramento Valley is a new species, and they are now hunting a name for it.

The largest ice cap in Europe is Vatnajokull in southeast Iceland, with an area of 3,400 square miles.

When Spanish explorers discovered tobacco in America, they carried back seeds and grew the plant as a curiosity.

Washable evening slippers are the latest possibility through the development of a new waterproof cloth in gold, silver and copper finishes.

A Chinese jade carving exhibited in Chicago is a pagoda 51 inches high carved out of a single piece of jade and representing 16 years of continuous work.

Tortoises are noted for their long lives, but a well-known expert on reptiles believes that crocodilians probably are the longest-lived creatures on earth.

Following a recent windstorm in Louisiana it was reported that a red rooster was carried 30 miles and deposited safely on a farm in another parish.

## WITH THE SCIENCES THIS WEEK

### ANATOMY

At what age does the human brain reach adult size? p. 4.

### ARCHAEOLOGY

How large an area is covered by the newly-discovered Mayan ruins? p. 5. *The History of the Maya—Thomas Gann and J. Eric Thompson—Scribner, 1931 \$2.50.*

What was the Mayan national sport? p. 15.

### ASTRONOMY

Do variable stars radiate most energy when they are brightest? p. 5.

How many planets can be seen during July? p. 6. *A Guide to the Constellations—S. G. Barton and W. H. Barton—McGraw-Hill, 1928, \$2.50.*

### BACTERIOLOGY

How may tomato seed be freed of bacterial canker? p. 14.

### ENTOMOLOGY

How do insects breathe? p. 14.

How may the sexes be combined in one butterfly? p. 3.

### GEOLOGY

When did the last great ice sheet leave North America and Europe? p. 4. *Ice Ages Recent and Modern—A. P. Coleman—Macmillan, 1926, \$4.*

### HOME ECONOMICS

Can scientifically correct clothes for children be bought? p. 9. *Bibliography on the Relation of Clothing to Health—Ruth O'Brien, Esther C. Peterson and Ruby K. Worner—Govt. Print. Off., 1929, 25c.*

### MEDICINE

Can hardening of brain arteries cause epilepsy? p. 13. *Treatment of Epilepsy—Fritz B. Talbot—Macmillan, 1930, \$4.*

What happens to a person suffering a lack of sugar? p. 5.

### NUTRITION

How long has it taken good food to improve the American people? p. 4.

### PHYSICS

What is the energy of cosmic rays? p. 3.

What is the heaviest element smashed by atomic bombardment? p. 3.

What does the newly-found heavy-weight hydrogen atom weigh? p. 10.

### PHYSICS-GEOLOGY

What happens to earth materials at high pressures? p. 12.

### PHYSIOLOGY

How many nerve cells are in the cerebral cortex of the brain? p. 8.

### PSYCHOLOGY

Can your intelligence be changed? p. 9.

### ZOOLOGY

What frogs dislike water? p. 7.

*These curiosity-arousing questions show at a glance the wide field of scientific activity from which this week's news comes. Book references in italic type are not sources of information of the article, but are references for further reading. Books cited can be supplied by Book Dept., Science News Letter, at publishers' prices, prepaid in the United States.*